

INLET NOTES

INLET TO BE CONSTRUCTED OF STRUCTURAL P.C. CONCRETE. THE CONTRACT UNIT PRICE PER INLET SHALL INCLUDE THE FRAME, GRATE AND STEPS IN PLACE AND COMPLETE PER UNIT.

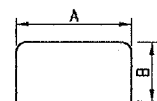
1/2" CHAMFER TO BE USED ON ALL EXPOSED CORNERS OF INLETS. BARS TO BE INSTALLED 2" FROM FACE OF WALLS.

THE FRAME AND GRATE SHALL BE NEENAH R-3475 OR APPROVED EQUAL.

INLET STEPS SHALL BE NEENAH R-1982-1, OR APPROVED EQUAL, INSTALLED 15" CENTER-TO-CENTER. THE COST OF THE STEPS SHALL BE INCLUDED IN THE CONTRACT UNIT PRICE FOR EACH INLET.

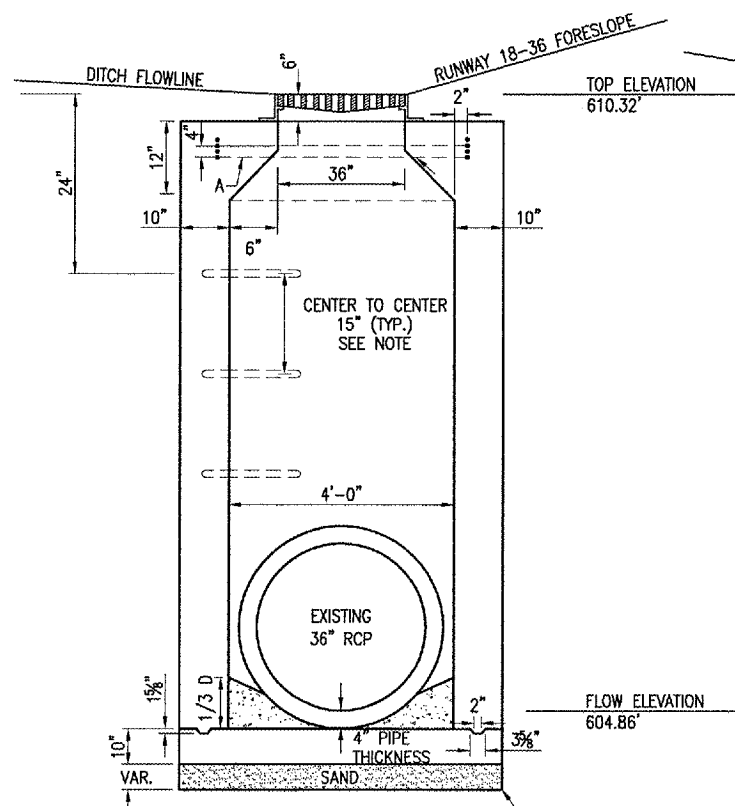
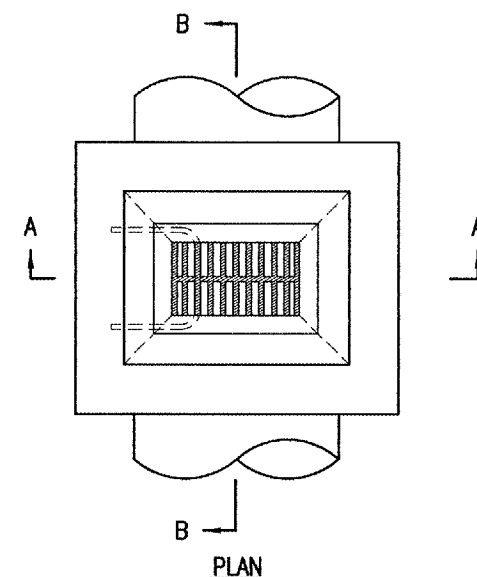
HEADWALL DETAIL

THE PROPOSED 36" PCC HEADWALLS WILL BE CONSTRUCTED ACCORDING TO DOT STANDARD 542101 - REINFORCED CONCRETE END SECTIONS FOR PIPE CULVERTS 15" TO 36" AT RIGHT ANGLES WITH ROADWAY.



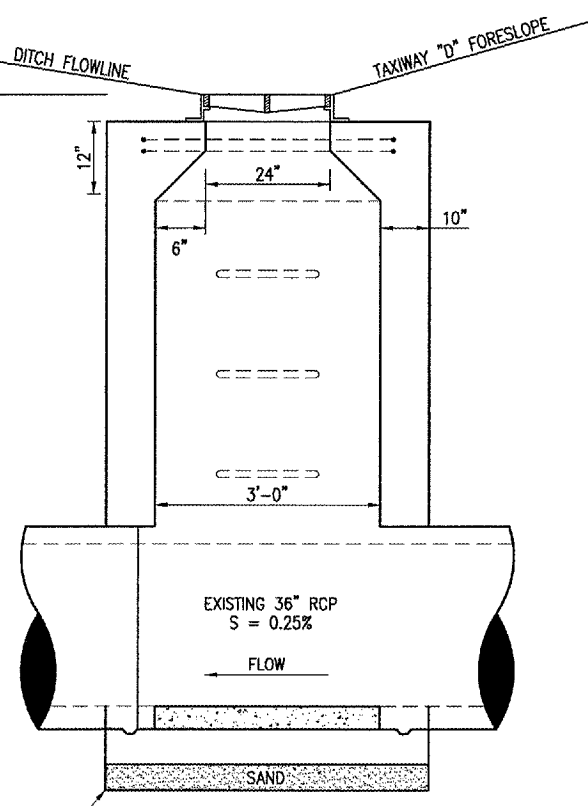
REINFORCING STEEL BAR TYPE

TYPE	QUANTITY PER INLET	DIMENSIONS		SIZE	APPROX. WT. OF BARS IN INLET
		A	B		
A	4	4'-4"	3'-0"	#5	43.1

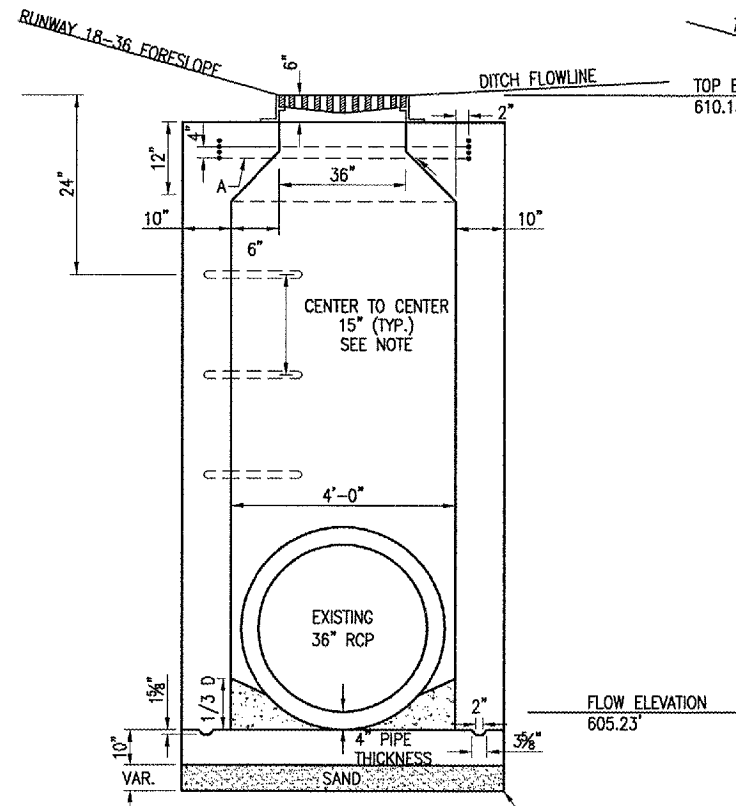


SECTION A-A

PROPOSED INLET NO. 1

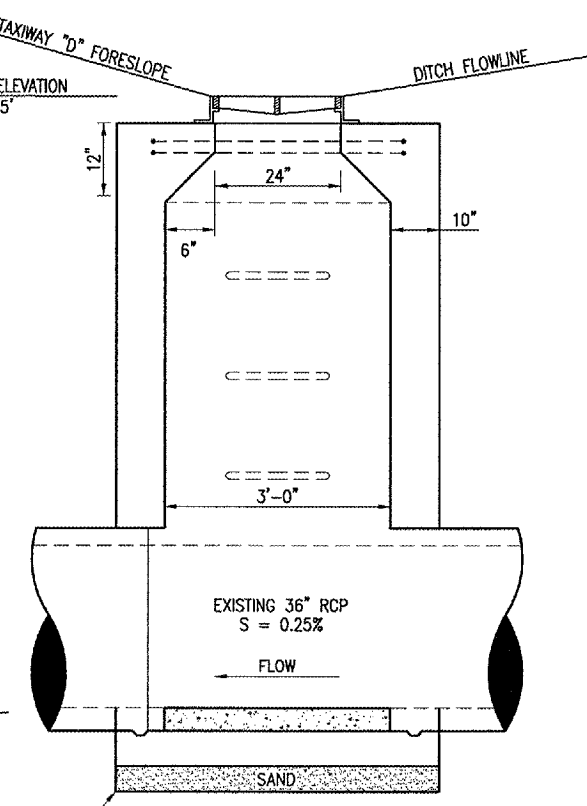


SECTION B-B



SECTION A-A

PROPOSED INLET NO. 2



SECTION B-B

DATE	REVISION	BY

TAYLORVILLE MUNICIPAL AIRPORT
TAYLORVILLE, ILLINOIS

PROJECT NO. 828-03RWYCD-0800	DATE 02/16/05
EXHIBIT R-531DRN.DWG	SCALE
NO. SCALE	NO. SCALE
DATE 02/16/05	DATE 02/16/05
LAYOUT	MLB
DRAWN	MLB
REVIEWED	CAH
	xx/xx/xx



CONSTRUCT RUNWAY 9-27
PROPOSED DRAINAGE NOTES AND DETAILS

MAY 04, 2005 2:16 PM RAW I:\AIRPORTS\T.VILLE\828-03RWYCD\AIRPORT\SHEETS\R-531DRN.DWG - DRAINAGE DETAILS