

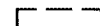
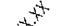

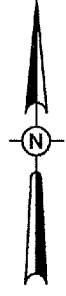


**LEGEND**

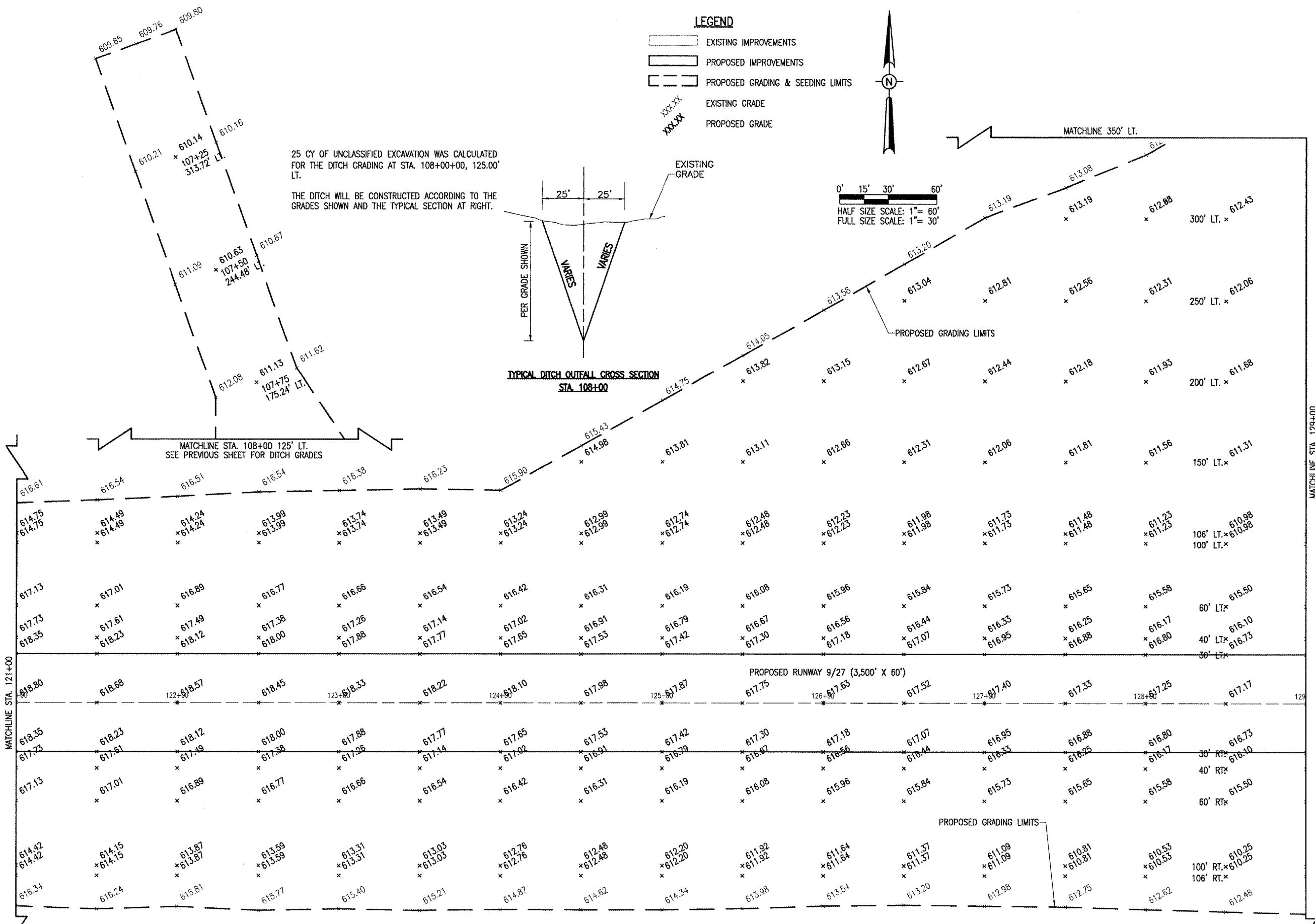
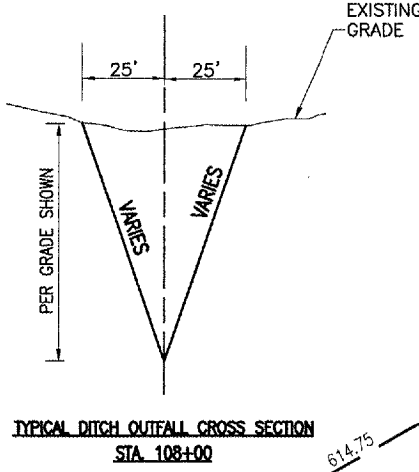
-  EXISTING IMPROVEMENTS
-  PROPOSED IMPROVEMENTS
-  PROPOSED GRADING & SEEDING LIMITS
-  EXISTING GRADE
-  PROPOSED GRADE



0' 15' 30' 60'  
 HALF SIZE SCALE: 1" = 60'  
 FULL SIZE SCALE: 1" = 30'

25 CY OF UNCLASSIFIED EXCAVATION WAS CALCULATED FOR THE DITCH GRADING AT STA. 108+00+00, 125.00' LT.

THE DITCH WILL BE CONSTRUCTED ACCORDING TO THE GRADES SHOWN AND THE TYPICAL SECTION AT RIGHT.



DATE	REVISION	BY

TAYLORVILLE MUNICIPAL AIRPORT  
 TAYLORVILLE, ILLINOIS

IL. PROJ.: TAZ-3166 A.I.P. PROJ.: 3-17-0100-87

FILE	DATE	BY	REVIEWED
FILE: R-191STK.DWG	02/10/05	MLB	XXX
DATE: 02/10/05	03/28/05	CAH	



Hanson Professional Services Inc.  
 1525 South Sixth Street  
 Springfield, Illinois 62703-2888  
 Offices Nationwide

CONSTRUCT  
 RUNWAY 9-27  
 PROPOSED  
 STAKING PLAN  
 STA. 121+00 TO STA. 129+00

MAY 03, 2005 12:23 PM RAW  
 E:\AIRPORTS\TYLORVILLE\B28-03RWYGD\AIRPORT\SHEETS\R-191STK.DWG - STA. 121+00 TO STA. 129+00