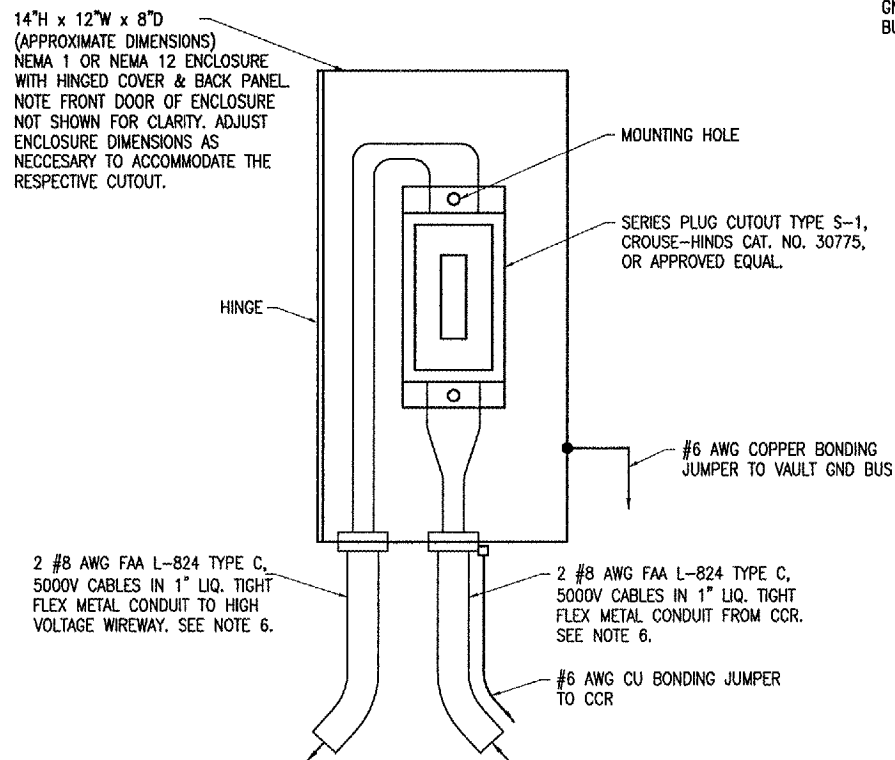


HIGH VOLTAGE WIRING SCHEMATIC



SERIES PLUG CUTOUT MOUNTING DETAIL
(TYPICAL FOR 3)

NOTES

1. PROVIDE PHENOLIC ENGRAVED LEGEND PLATES FOR EACH CONSTANT CURRENT REGULATOR NOTING THE REGULATOR DESIGNATION, THE RUNWAY OR TAXIWAY SERVED AND THE POWER SOURCE AND CIRCUIT NUMBER.
2. EACH PLUG CUTOUT CABINET SHALL BE FURNISHED WITH A PHENOLIC ENGRAVED LEGEND PLATE THAT IDENTIFIES THE RESPECTIVE CIRCUIT OR REGULATOR.
3. PROVIDE PHENOLIC ENGRAVED LEGEND PLATES FOR EACH CUTOUT TO IDENTIFY THE RESPECTIVE CUTOUT INPUT CONNECTION AND THE RESPECTIVE CUTOUT OUTPUT CONNECTION.
4. PROVIDE ADEQUATE WORKING SPACE IN FRONT OF EACH CUTOUT ENCLOSURE TO MEET NEC CLEARANCE REQUIREMENTS.
5. PROVIDE WARNING SIGN ON VAULT DOOR LABELED "DANGER - HIGH VOLTAGE - KEEP OUT" PER THE REQUIREMENTS OF NEC 110.34 (c).
6. LIQUID TIGHT FLEXIBLE METAL CONDUIT SHALL BE U.L. LISTED SUITABLE FOR GROUNDING. LIQUID TIGHT FLEXIBLE METAL CONDUIT THAT IS NOT LISTED SUITABLE FOR GROUNDING SHALL REQUIRE AN EXTERNAL OR INTERNAL #6 AWG COPPER BONDING JUMPER WITH APPROPRIATE GROUNDING FITTINGS OR LUGS. LIQUID TIGHT FLEXIBLE METAL CONDUIT THAT IS USED FOR FLEXIBILITY (INCLUDING CONNECTIONS TO CCR'S & TRANSFORMERS) SHALL REQUIRE AN EXTERNAL BONDING JUMPER OR INTERNAL EQUIPMENT GROUNDING CONDUCTOR PER NEC 350.60.

LEGEND

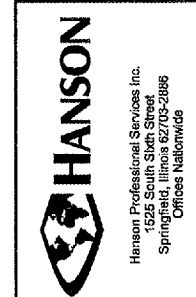
- "I" DENOTES PLUG CUTOUT WITH PLUG INSERTED
- "P" DENOTES PLUG CUTOUT WITH PLUG PULLED
- "CCR" DENOTES CONSTANT CURRENT REGULATOR

REVISION	DATE	BY

TAYLORVILLE MUNICIPAL AIRPORT
TAYLORVILLE, ILLINOIS

IL. PROJ.: TAZ-3166 A.I.P. PROJ.: 3-17-0100-B7

HEL Project No. 828-03RWYGD_0800	Filename E-604.DWG	Scale NO SCALE	Date 04/22/05
LAYOUT	KNL	02/03/05	02/03/05
DRAWN	MV	02/03/05	02/03/05
REVIEWED	CAH	02/03/05	02/03/05



CONSTRUCT
RUNWAY 9-27
HIGH VOLTAGE
WIRING SCHEMATIC