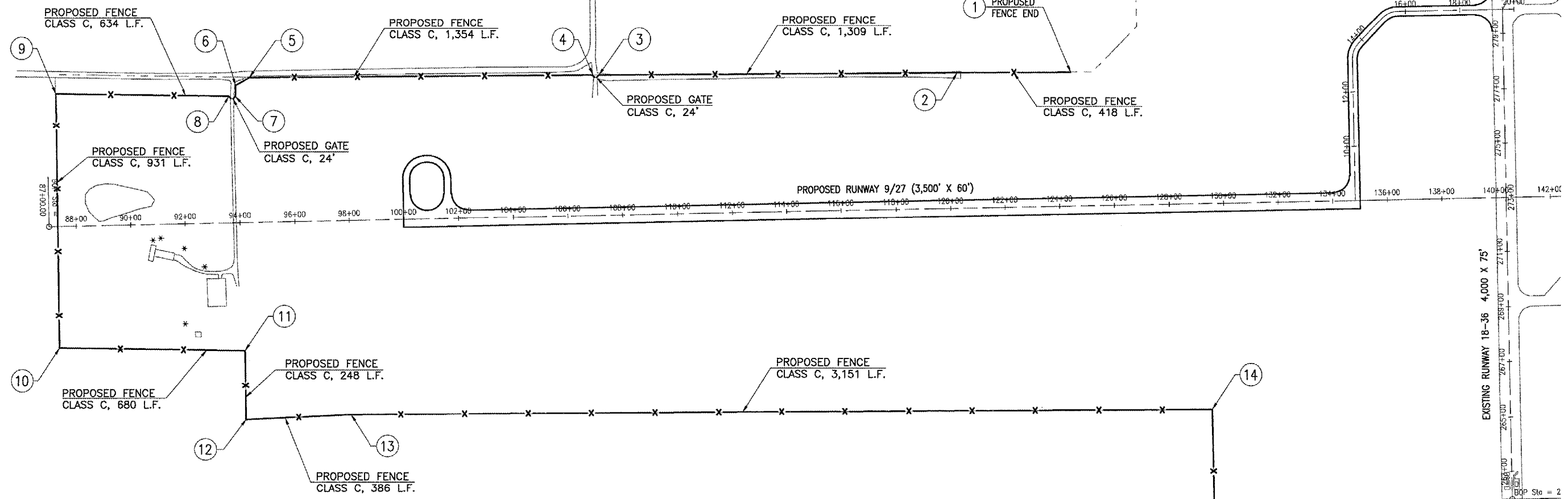


162-FENCING NOTES:

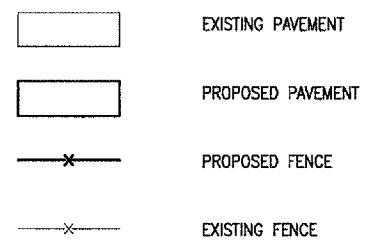
ALL FENCING PROPOSED WILL BE INSTALLED IN ACCORDANCE TO IDOT STANDARDS 665001-01 AND 664001-01 FOR WOVEN WIRE AND CHAIN LINK FENCES, RESPECTIVELY, AND THE SUPPLEMENTAL SPECIFICATIONS AND RECURRING SPECIAL PROVISIONS, ADOPTED JULY 1, 2004.

AT LOCATIONS OF SMALL NATURAL SWALES OR DRAINAGE DITCHES AND WHERE IT IS NOT PRACTICAL TO HAVE THE FENCE CONFORM TO THE GENERAL CONTOUR OF THE GROUND SURFACE, LONGER POSTS MAY BE USED AND MULTIPLE STRANDS OF BARBED WIRE STRETCHED THEREON TO SPAN THE OPENING BELOW THE FENCE. THE VERTICAL CLEARANCE BETWEEN STRANDS OF BARBED WIRE SHALL BE 6 INCHES OR LESS.

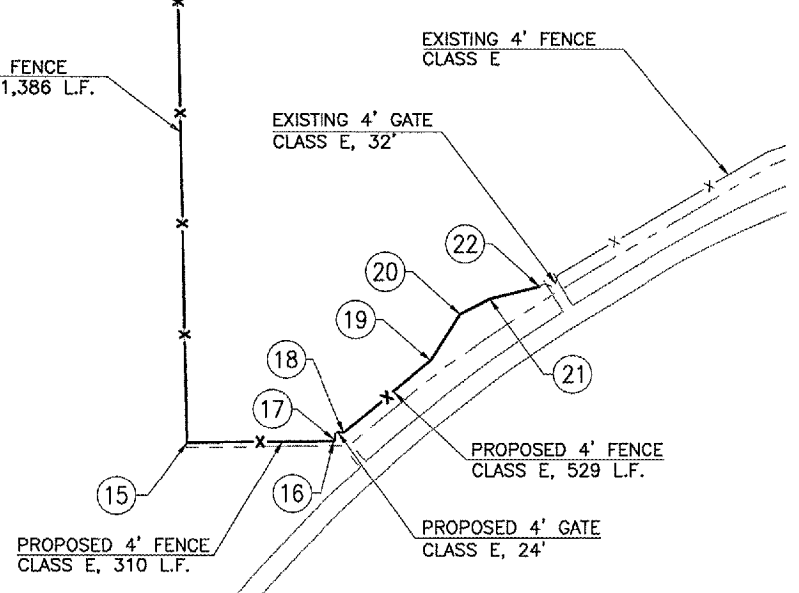
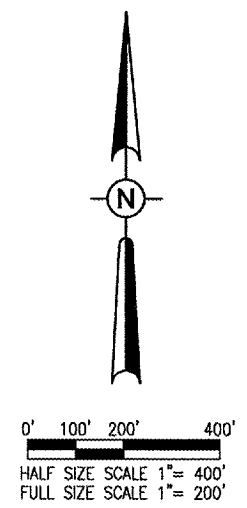
ALL CLASS C FENCE FABRIC WILL BE INSTALLED ON THE INSIDE OF THE FENCE POSTS. THE CLASS E FENCE SHOWN WILL BE INSTALLED WITH THE FABRIC ON THE OUTSIDE OF THE FENCE POSTS. THE COORDINATES FOR THE CLASS E FENCE SHOWN BELOW ARE LOCATED A MINIMUM OF 10 FT FROM THE PROPERTY LINE THEREFORE CLEARING CAN BE COMPLETED UP TO THE PROPERTY LINE WHERE NECESSARY TO ACCOMMODATE THE CONSTRUCTION OF THE FENCE. ALL CLEARING NECESSARY TO COMPLETE THIS TASK WILL BE CONSIDERED INCIDENTAL TO THE ERECTION OF THE FENCE AND NO ADDITIONAL COMPENSATION WILL BE ALLOWED.



FENCE LOCATIONS					
POINT	STATION	OFFSET	NORTHING (Y)	EASTING (X)	DESCRIPTION
1	124+50	491.60' LT.	1,044,185.503	2,531,712.496	BEGINNING POINT ON LINE
2	120+32.43	497.53' LT.	1,044,182.585	2,531,294.907	POINT ON LINE
3	107+24	516.10' LT.	1,044,173.441	2,529,986.378	GATE POST
4	107+00	516.44' LT.	1,044,173.273	2,529,962.377	GATE POST
5	94+44.44	534.25' LT.	1,044,164.499	2,528,706.722	CORNER
6	93+93.42	506.39' LT.	1,044,135.560	2,528,656.302	CORNER
7	93+92	466.41' LT.	1,044,095.559	2,528,655.724	GATE POST
8	93+68	467.27' LT.	1,044,095.908	2,528,631.724	GATE POST
9	87+34.71	489.76' LT.	1,044,104.986	2,527,998.082	CORNER
10	87+29.73	441.69' RT.	1,043,173.636	2,528,012.839	CORNER
11	94+09.24	465.83' RT.	1,043,163.896	2,528,692.703	CORNER
12	94+07.91	713.87' RT.	1,042,915.876	2,528,696.633	CORNER
13	97+93.50	703.49' RT.	1,042,934.423	2,529,081.909	POINT ON LINE
14	129+43.62	748.20' RT.	1,042,956.438	2,532,232.278	CORNER
15	129+43.26	2133.31' RT.	1,041,571.150	2,532,261.280	CORNER
16	132+38.94	2136.88' RT.	1,041,574.550	2,532,567.880	CORNER
17	132+52.22	2134.98' RT.	1,041,576.498	2,532,570.174	GATE POST
18	132+70.85	2119.85' RT.	1,041,592.023	2,532,588.476	GATE POST
19	134+53.96	1971.07' RT.	1,041,744.646	2,532,768.392	CORNER
20	135+16.96	1873.05' RT.	1,041,843.975	2,532,829.307	CORNER
21	135+79.67	1841.94' RT.	1,041,876.404	2,532,891.343	CORNER
22	136+83.56	1818.86' RT.	1,041,901.682	2,532,994.721	END POINT ON LINE



FENCING QUANTITIES			
ITEM NO.	DESCRIPTION	UNIT	QUANTITY
AR161510	CLASS C FENCE	L.F.	10,497
AR161624	CLASS C GATE-24'	EA.	2
AR162504	CLASS E FENCE 4'	L.F.	1,042
AR162605	CLASS E GATE-5'	EA.	2
AR162624	CLASS E GATE-24'	EA.	1
AR162900	REMOVE CLASS E FENCE	L.F.	203



TA001

DATE	REVISION	BY

TAYLORVILLE MUNICIPAL AIRPORT
TAYLORVILLE, ILLINOIS

IL. PROJ.: TAZ-3166 A.I.P. PROJ.: J-17-0100-B7

LAYOUT	RAW	CAH
	03/29/05	03/29/05
	03/29/05	03/29/05

HEB Project No. 828-03RWYGD.0800
Drawings: R-171FEN.DWG
Scale: 1"= 200'
Date: 03/29/05



CONSTRUCT RUNWAY 9-27
PROPOSED SITE FENCING PLAN

MAY 05, 2005 8:58 PM RAW F:\AIRPORTS\TAYLORVILLE\828-03RWYGD\AIRPORT_SHEETS\R-171FEN.DWG - SITE