

F.A. RTE.	SECTION	COUNTY	TOTAL SHEETS	SHEET NO.
2578	532B	DU PAGE	781	1
		ILLINOIS	CONTRACT NO. 60477	

* 781 - 2 + 9 = 788

FOR INDEX OF SHEETS, SEE SHEET NO. 2

HIGHWAY CLASSIFICATION
PRINCIPAL ARTERIAL ROUTE :
 (FROM ARMY TRAIL ROAD TO LAKE STREET)
SUBURBAN MINOR ARTERIAL :
 (FROM LAKE STREET TO THE ELGIN-O'HARE EXPRESSWAY)

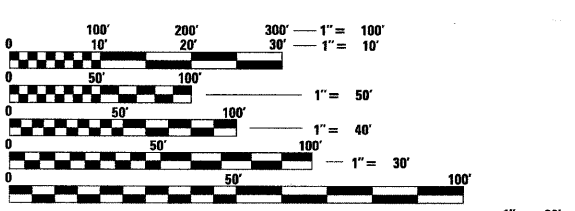
DESIGN DESIGNATION
 3500(20) ARTERIAL 14.56 (PCC-20)

1 OF 2

TRAFFIC DATA
 IL RTE 53
 2002 ADT = 14,200 - 28,800
 2020 ADT = 26,000 - 35,000

POSTED SPEED LIMIT=40 MPH
DESIGN SPEED=45 MPH

PROJECT DESCRIPTION
 THE PROPOSED IMPROVEMENT CONSISTS OF THE WIDENING AND RECONSTRUCTION OF ILLINOIS ROUTE 53 ON THE EXISTING ALIGNMENT, NEW STORM SEWER SYSTEM, NOISE WALLS, DRY LAND BRIDGE, AND TRAFFIC SIGNAL MODERNIZATION.



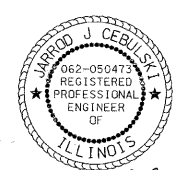
FULL SIZE PLANS HAVE BEEN PREPARED USING STANDARD ENGINEERING SCALES. REDUCED SIZED PLANS WILL NOT CONFORM TO STANDARD SCALES. IN MAKING MEASUREMENTS ON REDUCED PLANS, THE ABOVE SCALES MAY BE USED.

J.U.L.I.E.
 JOINT UTILITY LOCATION INFORMATION FOR EXCAVATION
 1-800-892-0123 OR 811

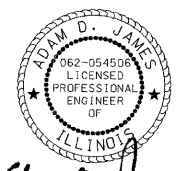
STATE OF ILLINOIS
 DEPARTMENT OF TRANSPORTATION
 DIVISION OF HIGHWAYS

PLANS FOR PROPOSED HIGHWAY
 FAP ROUTE 870 / FAU ROUTE 2578 (ILLINOIS ROUTE 53)
 ARMY TRAIL ROAD TO ELGIN O'HARE EXPRESSWAY
 ROADWAY RECONSTRUCTION, ADDITIONAL LANES, DRY LAND BRIDGE
 CONSTRUCTION, TRAFFIC SIGNAL MODERNIZATION AND INTERCONNECT

SECTION 532B
 PROJECT NO: ACF-0870(012)
 DUPAGE COUNTY
 C-91-397-97



Jarrod J. Cebulski
 JARROD J. CEBULSKI, P.E.
 NO. 062-050473
 EXP. DATE: 11/30/11



Adam D. James
 ADAM D. JAMES, P.E.
 NO. 062-054506
 EXP. DATE: 11/30/11



Roger Di Giulio
 ROGER DI GIULIO, S.E.
 NO. 062-05197
 EXP. DATE: 11/30/10



P.K. Gandhi
 P.K. GANDHI, P.E.
 NO. 062-034993
 EXP. DATE: 11/30/11



LOCATION OF SECTION INDICATED THIS: -

PATRICK ENGINEERING INC.
 4970 VARSITY DRIVE
 LISLE, IL 60532
 patrickengineering.com

STATE OF ILLINOIS
 DEPARTMENT OF TRANSPORTATION
 DIVISION OF HIGHWAYS

SUBMITTED *June 14 2010*
Scott E. Stitt, P.E.
 DEPUTY DIRECTOR OF HIGHWAYS, REGION ENGINEER

February 4 2011
Scott E. Stitt, P.E.
 ENGINEER OF DESIGN AND ENVIRONMENT

February 4 2011
Christine M. Reed
 DIRECTOR OF HIGHWAYS, CHIEF ENGINEER

**PRINTED BY THE AUTHORITY
 OF THE STATE OF ILLINOIS**

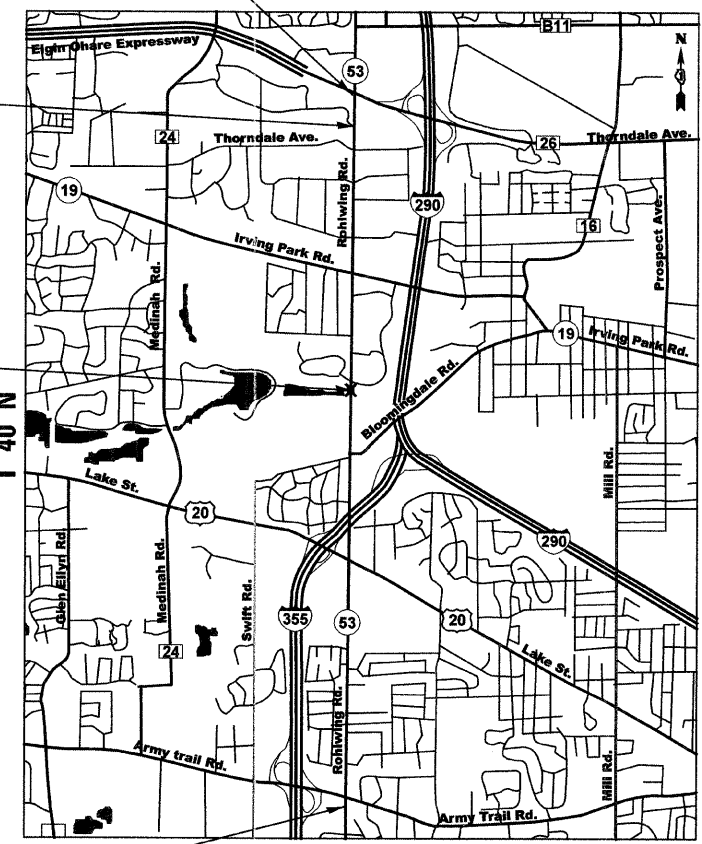
END PROJECT
 STA 250 + 34.81

DRY LAND BRIDGE
 CONSTRUCTION:
 STA. 240 + 30.00
 STA. 246 + 40.00
 SN:022-D012

STA. 157 + 28.20
 STA. 170 + 12.58
 IL RTE 53 OVER
 SPRING BROOK CREEK
 SN:022-0189

PROJECT LOCATED IN
 THE VILLAGES OF
 ADDISON AND ITASCA

BEGIN PROJECT
 STATION 35 + 66.56



LOCATION MAP
 SCALE
 1" = 2500'

GROSS LENGTH ILLINOIS RTE 53 = 21,468.25 FEET = 4.1 MILES
 NET LENGTH ILLINOIS RTE 53 = 21,468.25 FEET = 4.1 MILES

DISTRICT 1 - DESIGN/CONSULTANT SERVICES SECTION/ RAJENDRA SHAH (847) 705-4555

CONTRACT NO. 60477