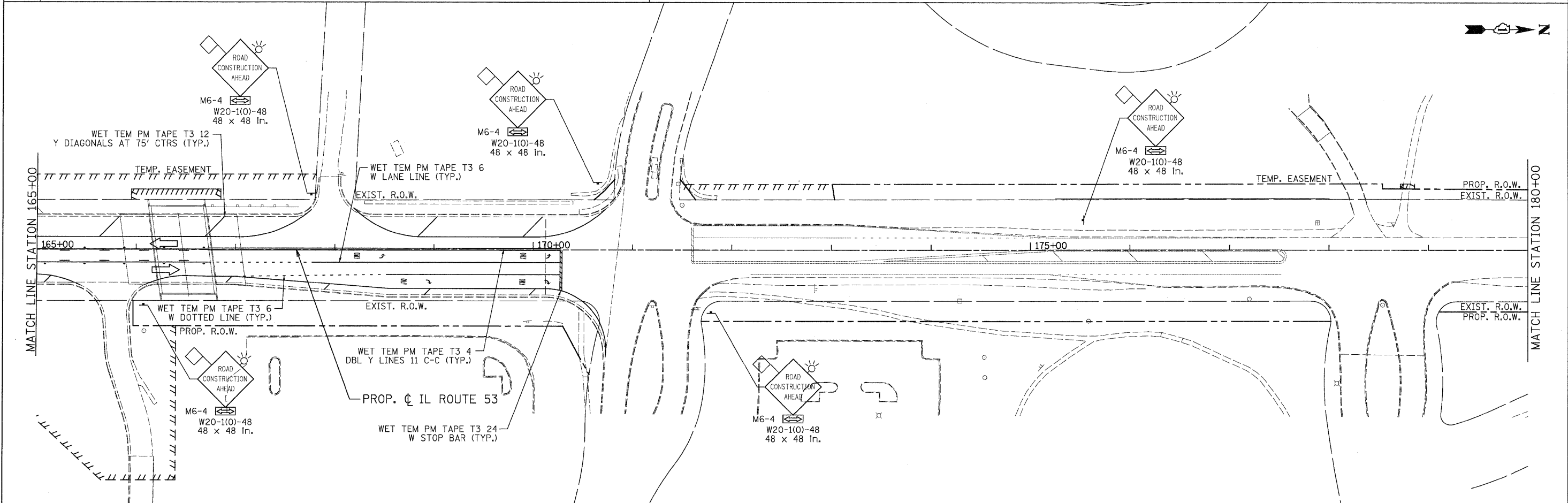


**LEGEND**

|  |                    |  |  |  |  |
|--|--------------------|--|--|--|--|
|  | TEMPORARY PAVEMENT |  | TYPE II BARRICADES OR DRUMS WITH STEADY BURNING LIGHTS @ 50 FT CENTERS ALONG ROADWAY (TANGENT), 25 FT CENTERS ALONG TAPERS AND 12 FT CENTERS ALONG RADII |  | VERTICAL PANEL WITH STEADY BURNING LIGHT 50 FT C-C |
|  | WORK ZONE          |  | TYPE III BARRICADES WITH FLASHING LIGHTS   |  | DIRECTION OF TRAFFIC                               |
|  | ARROW BOARD        |  |  |  |  |



|   |  |  |  |  |   |  |  |
|---|--|--|--|--|---|--|--|
| PATRICK ENGINEERING INC.<br>4970 VARSITY DRIVE<br>LISLE, IL 60532<br>patrickengineering.com | USER NAME = okersten(Lisle_R)<br>PLOT CONFIG = PDF09ay-Large.plt<br>PLOT SCALE = 1:50<br>PLOT DATE = 12/3/2010 | DESIGNED - MJV<br>DRAWN - MJV<br>CHECKED - JJC<br>DATE - 12/3/2010 | REVISED -<br>REVISED -<br>REVISED -<br>REVISED - | Illinois Department<br>of Transportation | <b>ILLINOIS ROUTE 53</b><br><b>SUGGESTED STAGES OF CONSTRUCTION &amp; TRAFFIC CONTROL</b><br><b>STAGE 2 PHASE 1</b> |  | F.A.U. RTE. 2578<br>SECTION 532B<br>COUNTY DUPAGE<br>TOTAL SHEETS 781<br>SHEET NO. 190<br>CONTRACT NO. 60477 |
|   | SCALE: 1"=50' SHEET MOT-84 OF 136 STA. 150+00 TO STA. 180+00   |  | FED. ROAD DIST. NO. ILLINOIS FED. AID PROJECT    |  |   |  |  |

G:\IDOT\9356\_A8\_(IL53)\Drawings\CADD\_Sheets\019139797-shr-staging\_198.dgn