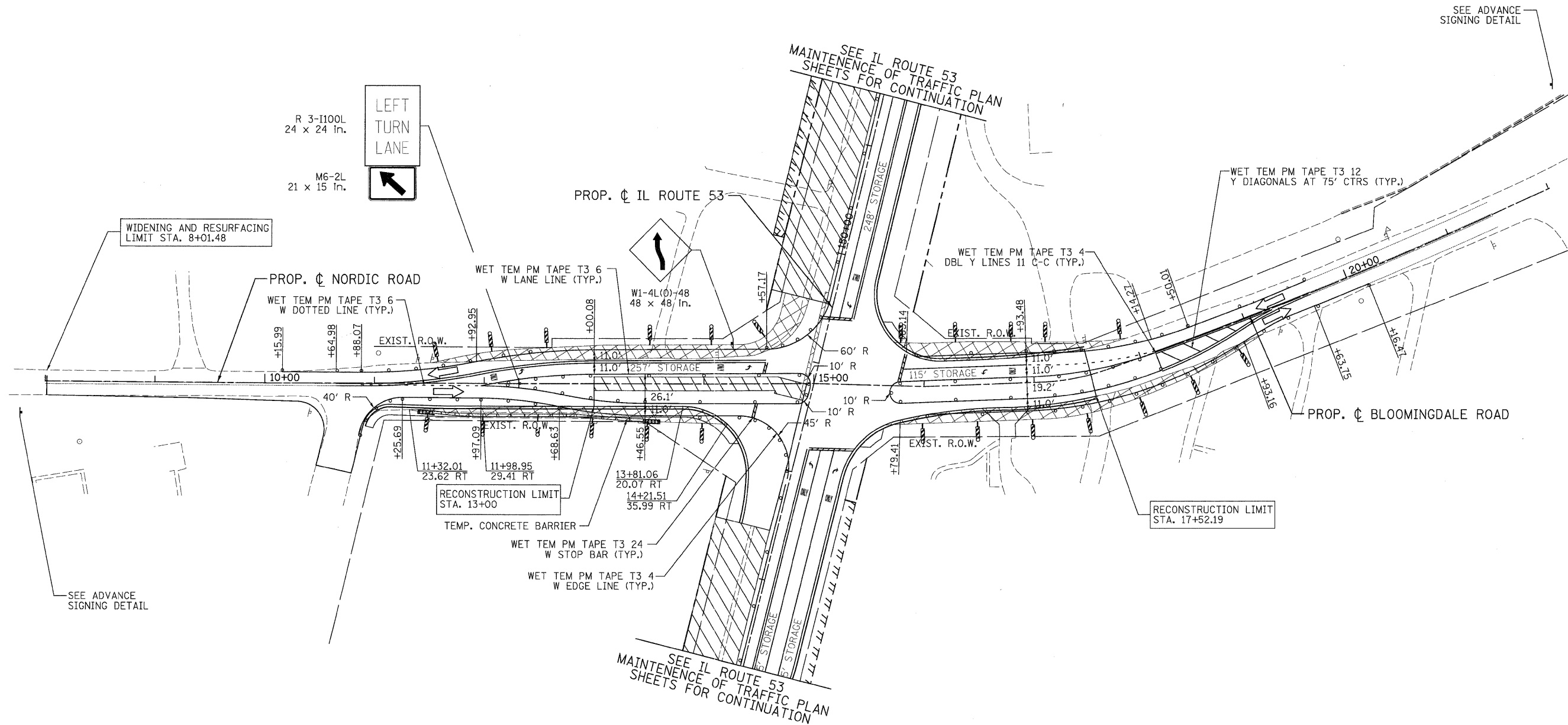
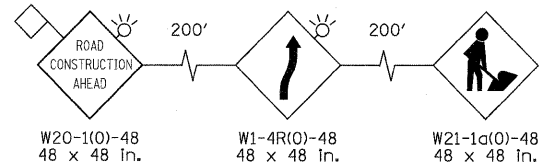
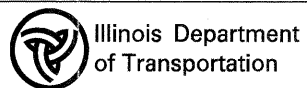


ADVANCE SIGNING DETAIL:



| LEGEND | |
|--------|--|
| | TEMPORARY PAVEMENT |
| | WORK ZONE |
| | ARROW BOARD |
| | TYPE II BARRICADES OR DRUMS WITH STEADY BURNING LIGHTS @ 50 FT CENTERS ALONG ROADWAY (TANGENT), 25 FT CENTERS ALONG TAPERS AND 12 FT CENTERS ALONG RADII |
| | VERTICAL PANEL WITH STEADY BURNING LIGHT 50 FT C-C |
| | TYPE III BARRICADES WITH FLASHING LIGHTS |
| | DIRECTION OF TRAFFIC |

| | | | |
|---|------------------------------------|------------------|-----------|
| PATRICK ENGINEERING INC. 4970 VARSITY DRIVE LISLE, IL 60532 patrickengineering.com | USER NAME = ckersten@lisle.il.gov | DESIGNED - MJV | REVISED - |
| | PLOT CONFIG = PDF(Grey, Large).plt | DRAWN - MJV | REVISED - |
| | PLOT SCALE = 1:50 | CHECKED - JJC | REVISED - |
| | PLOT DATE = 12/3/2010 | DATE - 12/3/2010 | REVISED - |



NORDIC ROAD/BLOOMINGDALE ROAD
SUGGESTED STAGES OF CONSTRUCTION & TRAFFIC CONTROL
STAGE 2 SUB-STAGE 2 PHASE 1

SCALE: 1"=50' SHEET MOT-92 OF 136 STA. TO STA.

| F.A. RTE. | SECTION | COUNTY | TOTAL SHEETS | SHEET NO. |
|---------------------|---------|---------------------------|--------------|--------------------|
| 2578 | 532B | DUPAGE | 781 | 198 |
| | | | | CONTRACT NO. 60477 |
| FED. ROAD DIST. NO. | | ILLINOIS FED. AID PROJECT | | |