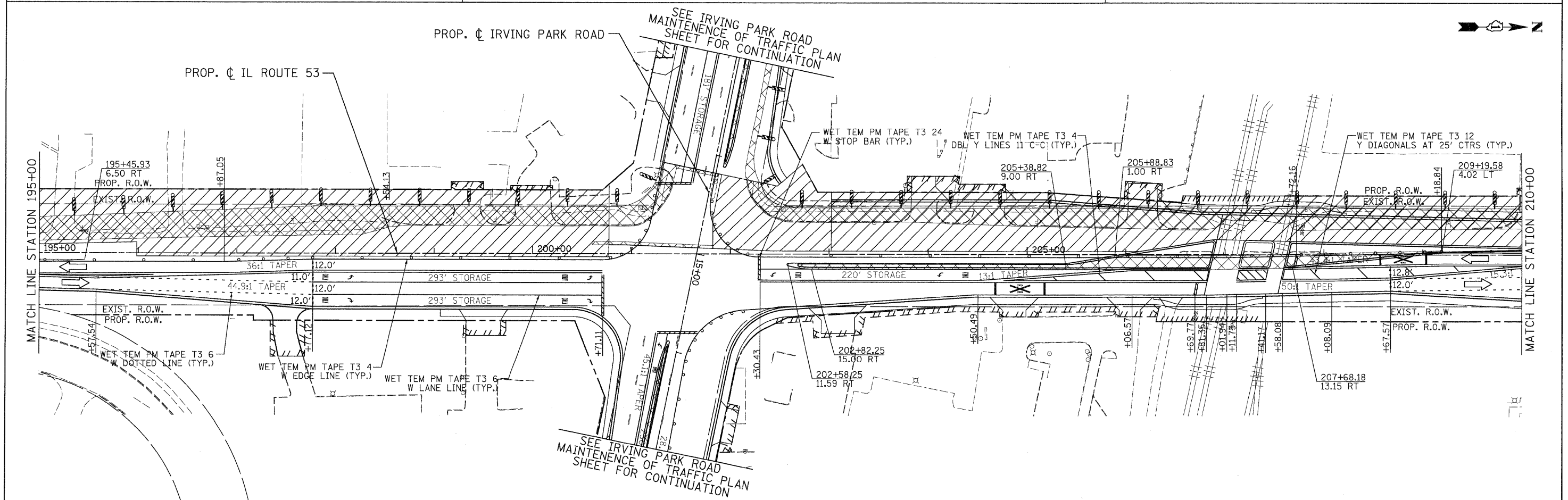


| LEGEND |                    |  |  |
|--------|--------------------|--|--|
|        | TEMPORARY PAVEMENT |  | TYPE II BARRICADES OR DRUMS WITH STEADY BURNING LIGHTS @ 50 FT CENTERS ALONG ROADWAY (TANGENT), 25 FT CENTERS ALONG TAPERS AND 12 FT CENTERS ALONG RADII |
|        | WORK ZONE          |  | VERTICAL PANEL WITH STEADY BURNING LIGHT 50 FT C-C   |
|        | ARROW BOARD        |  | TYPE III BARRICADES WITH FLASHING LIGHTS   |
|        |                    |  | DIRECTION OF TRAFFIC   |



|  |                                    |                |           |  |   |                            |  |   |              |               |                  |               |  |
|--|------------------------------------|----------------|-----------|--|---|----------------------------|--|---|--------------|---------------|------------------|---------------|--|
| <b>PATRICK ENGINEERING INC.</b><br>4970 VARSITY DRIVE<br>LISLE, IL 60532<br>patrickengineering.com | USER NAME = akersten(Lisle,RI)     | DESIGNED - MJV | REVISED - | <b>Illinois Department of Transportation</b> | <b>ILLINOIS ROUTE 53</b><br><b>SUGGESTED STAGES OF CONSTRUCTION &amp; TRAFFIC CONTROL</b><br><b>STAGE 2 PHASE 2</b> |                            |  | F.A.U. RTE. 2578                              | SECTION 532B | COUNTY DUPAGE | TOTAL SHEETS 781 | SHEET NO. 224 |  |
|  | PLOT CONFIG = PDF(Grey, Large).plt | DRAWN - MJV    | REVISED - |  |   |                            |  | CONTRACT NO. 60477                            |              |               |                  |               |  |
|  | PLOT SCALE = 1:50                  | CHECKED - JJC  | REVISED - |  |   |                            |  | FED. ROAD DIST. NO. ILLINOIS FED. AID PROJECT |              |               |                  |               |  |
| PLOT DATE = 12/3/2010  | DATE = 12/3/2010                   | REVISED -      |           | SCALE: 1"=50'                                | SHEET MOT-118 OF 136  | STA. 180+00 TO STA. 210+00 |  |   |              |               |                  |               |  |

G:\1001\9396\_A0\_IL53\Drawings\CADD Sheets\019139797-sh-t-staging..224.dgn