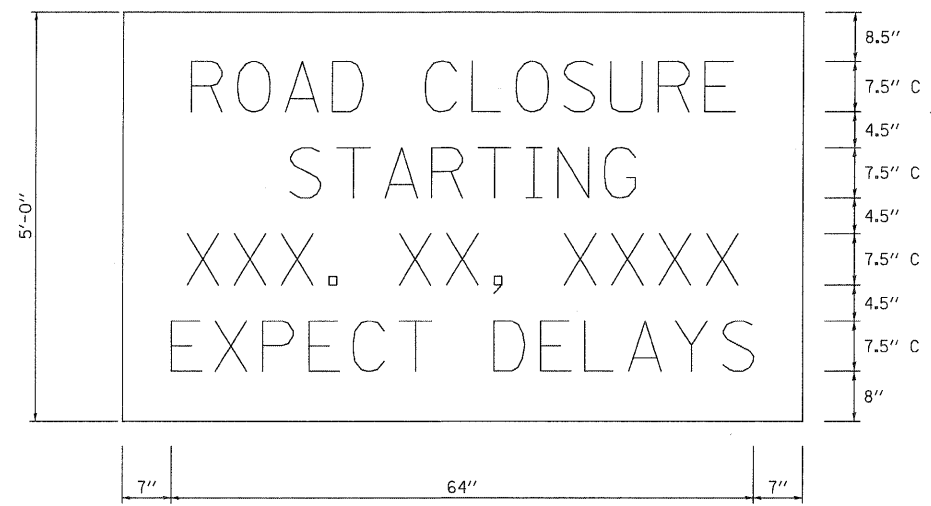
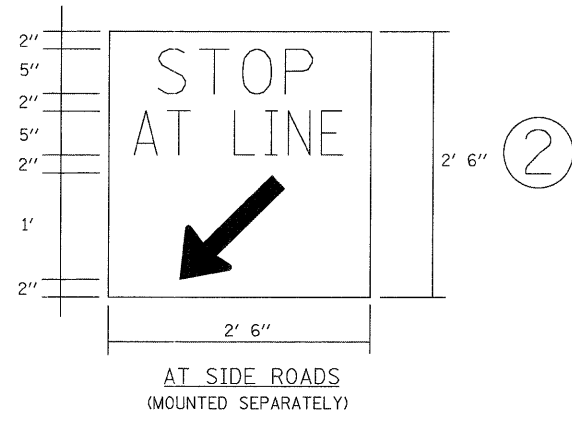
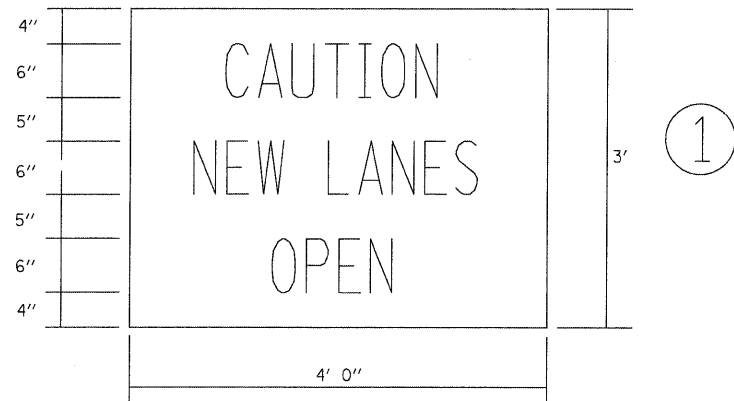


AT ENDS OF PROJECT

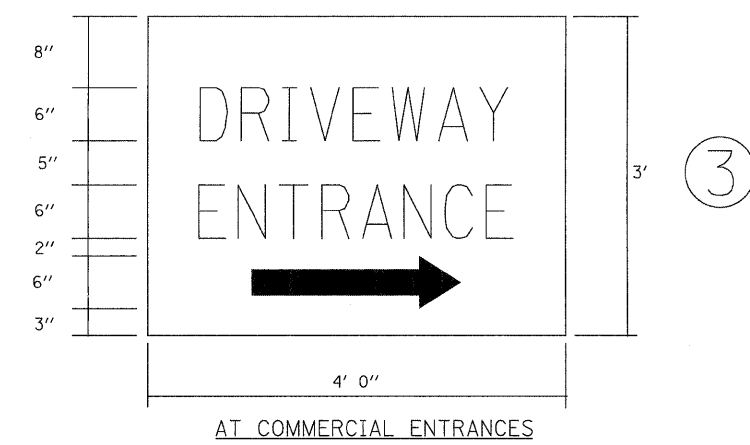


TEMPORARY INFORMATION SIGNING (BM-19)



AT SIDE ROADS
(MOUNTED SEPARATELY)

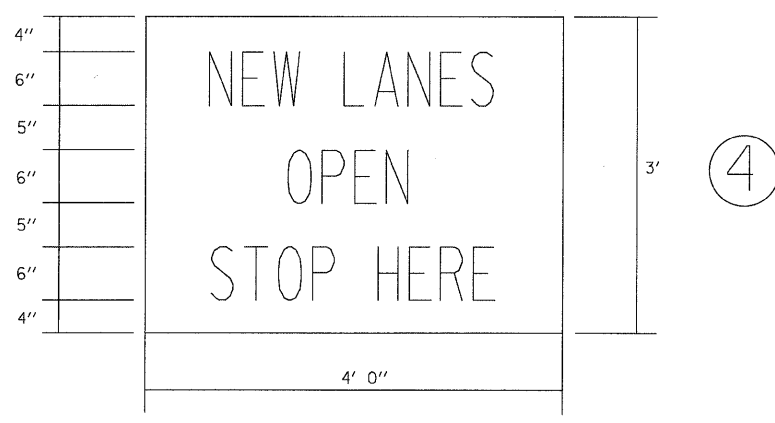
NOTE:
ABOVE SIGN SHALL BE BLACK ON ORANGE
REFLECTIVE BACKGROUND



AT COMMERCIAL ENTRANCES

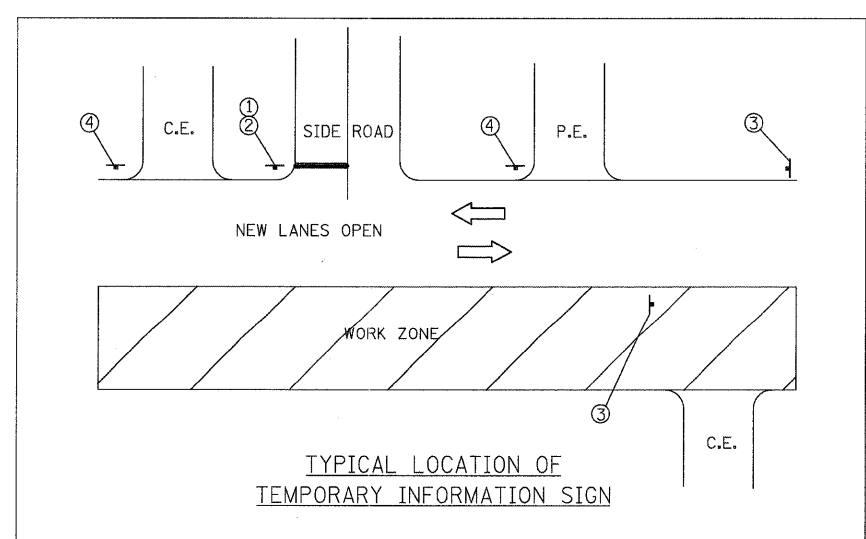
NOTE:
SIGN SHALL BE GREEN ON WHITE REFLECTIVE
BACKGROUND WITH .50 in. BORDER.
TWO SIGNS SHALL BE USED AT EACH COMMERCIAL
DRIVEWAY AS DIRECTED BY THE ENGINEER.
HALF OF THE SIGNS SHALL REQUIRE THE ARROW
TO POINT TO THE LEFT AND THE OTHER HALF
TO THE RIGHT (AS SHOWN).

SEE SPECIAL PROVISION FOR "TEMPORARY
INFORMATION SIGNS" FOR ADDITIONAL INFORMATION.
ALL DIMENSIONS ARE IN FEET
UNLESS OTHERWISE SHOWN.



AT ENTRANCES

NOTE:
ABOVE SIGNS SHALL BE BLACK ON ORANGE
REFLECTIVE BACKGROUND



TYPICAL LOCATION OF
TEMPORARY INFORMATION SIGN



USER NAME = ckarsten@lisle-ri
PLOT CONFIG = PDF10reg.Large.plt
PLOT SCALE = 1:50
PLOT DATE = 12/3/2010

DESIGNED - MJV
DRAWN - MJV
CHECKED - CPK
DATE - 12/3/2010

REVISED -
REVISED -
REVISED -
REVISED -



MCHENRY COUNTY
DIVISION OF TRANSPORTATION

ILLINOIS ROUTE 53
MAINTENANCE OF TRAFFIC
TEMPORARY SIGNING DETAIL

SCALE: N/A SHEET NO. MOT-135 OF 136 STA. TO STA.

F.A.P. RTE.	SECTION	COUNTY	TOTAL SHEETS	SHEET NO.
2578	532B	DUPAGE	781	241
FED. ROAD DIST. NO. ILLINOIS FED. AID PROJECT			CONTRACT NO. 60477	