

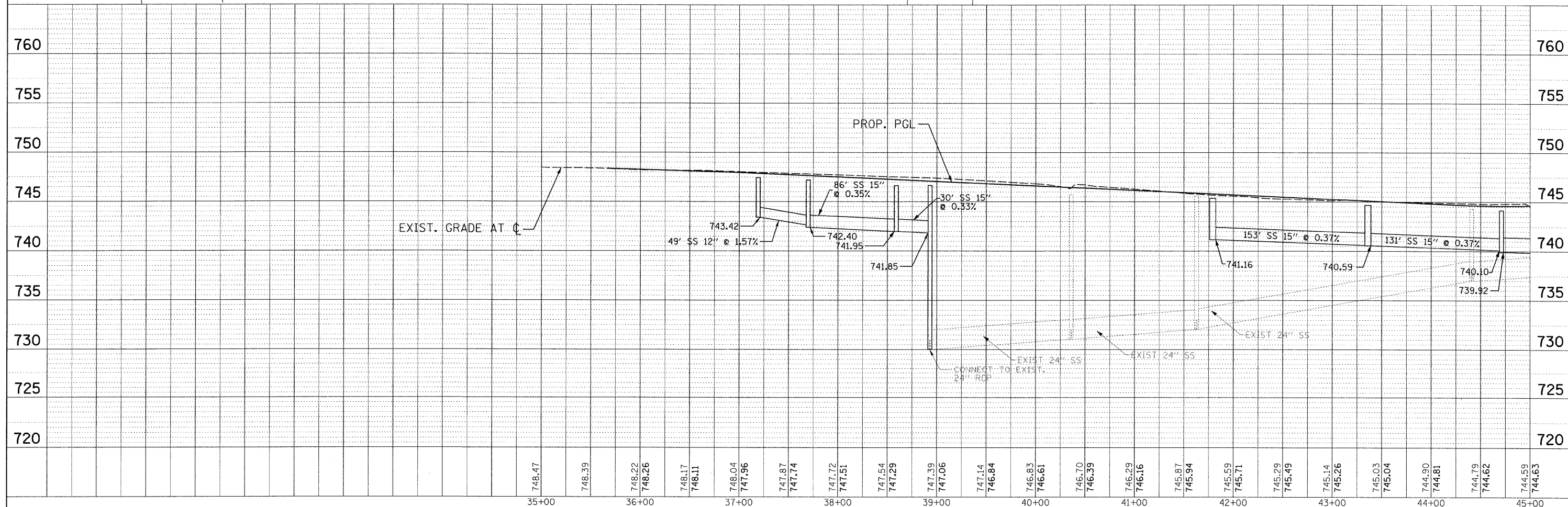
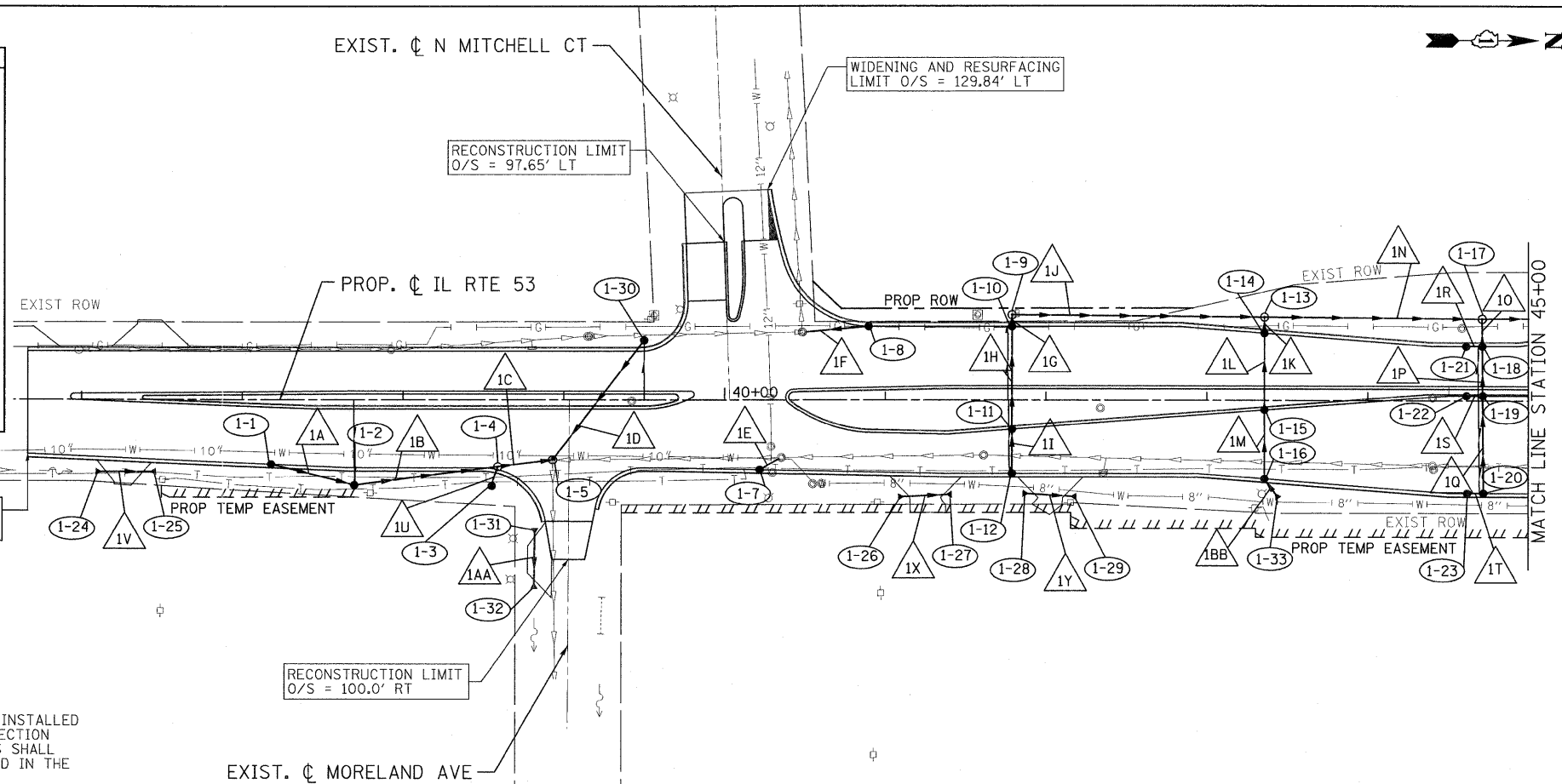
LEGEND:

BOUNDARY LINES/SYMBOLS	EXISTING	PROPOSED	BOUNDARY LINES/SYMBOLS	EXISTING	PROPOSED
REFERENCE LINE/CENTERLINE AND STATIONING	10+00	10+00	MANHOLE	○	○
STORM SEWER	— —	— —	FLARED END SECTION	△	△
CATCH BASIN	○	○	RIGHT OF WAY LINE	—	- - -
HEADWALL/ENDWALL	⌋	⌋	TEMPORARY EASEMENT	///	///
OPEN LID MANHOLE/INLET	□	□	PERMANENT EASEMENT	////	////
SWALE	— —	— —	DITCH	— —	— —
DETENTION HIGH WATER LEVEL (HWL)	— —	— —	RIPRAP	■	■
STORM SEWER REMOVAL	///	///	DITCH CHECK	— —	— —
STRUCTURE REMOVAL	[R]	[R]	GAS LINE	—G—	—G—
STRUCTURE RECONSTRUCTION	[REC]	[REC]	TELEPHONE LINE	—T—	—T—
STRUCTURE ADJUSTMENT	[ADJ]	[ADJ]	AERIAL LINE	—A—	—A—
GUTTER OUTLET	— —	— —	SANITARY SEWER	—S—	—S—
WETLAND	■	■	CABLE TELEVISION	—CTV—	—CTV—
			WATER MAIN	—W—	—W—
			PIPE UNDERDRAIN*	— —	— —

DATE	
BY	
REVISIONS	
NO.	
DATE	
BY	
REVISIONS	
NO.	

DATE	
BY	
REVISIONS	
NO.	
DATE	
BY	
REVISIONS	
NO.	

*NOTE: IN ADDITION TO THE LOCATIONS SHOWN, PIPE UNDERDRAIN SHALL BE INSTALLED WHERE POROUS GRANULAR EMBANKMENT, SUBGRADE IS REQUIRED PER THE DIRECTION OF THE RESIDENT ENGINEER. CONNECTIONS TO MANHOLES AND CATCH BASINS SHALL BE EITHER PRECAST IN OR CORED IN AND SHALL BE CONSIDERED AS INCLUDED IN THE COST OF THE STRUCTURE.



PATRICK ENGINEERING INC. 4970 VARSITY DRIVE LISLE, IL 60532 patrickengineering.com	USER NAME = ddoerfler(Rdwy_Lisle) PLOT CONFIG = PDF(Grey_Large).plt PLOT SCALE = 1:50 PLOT DATE = 3/21/2011 12:51:08 PM	DESIGNED - D.DOERFLER DRAWN - D.DOERFLER CHECKED - A.JAMES DATE - 3/21/2011	REVISED - REVISED - REVISED - REVISED -	Illinois Department of Transportation	ILLINOIS ROUTE 53 DRAINAGE AND UTILITIES PLAN AND PROFILE			F.A.U. RTE. 2578 SECTION 532B COUNTY DUPAGE TOTAL SHEETS 781 SHEET NO. 264	CONTRACT NO. 60477
	SCALE: 1"=50' SHEET NO. DRA-09 OF 36 STA. 35+66.56 TO STA. 45+00				FED. ROAD DIST. NO. ILLINOIS FED. AID PROJECT				

Q:\1001\9356_48_1L\53\Drawings\CADD Sheets\01913797-shr-drain_264.dgn