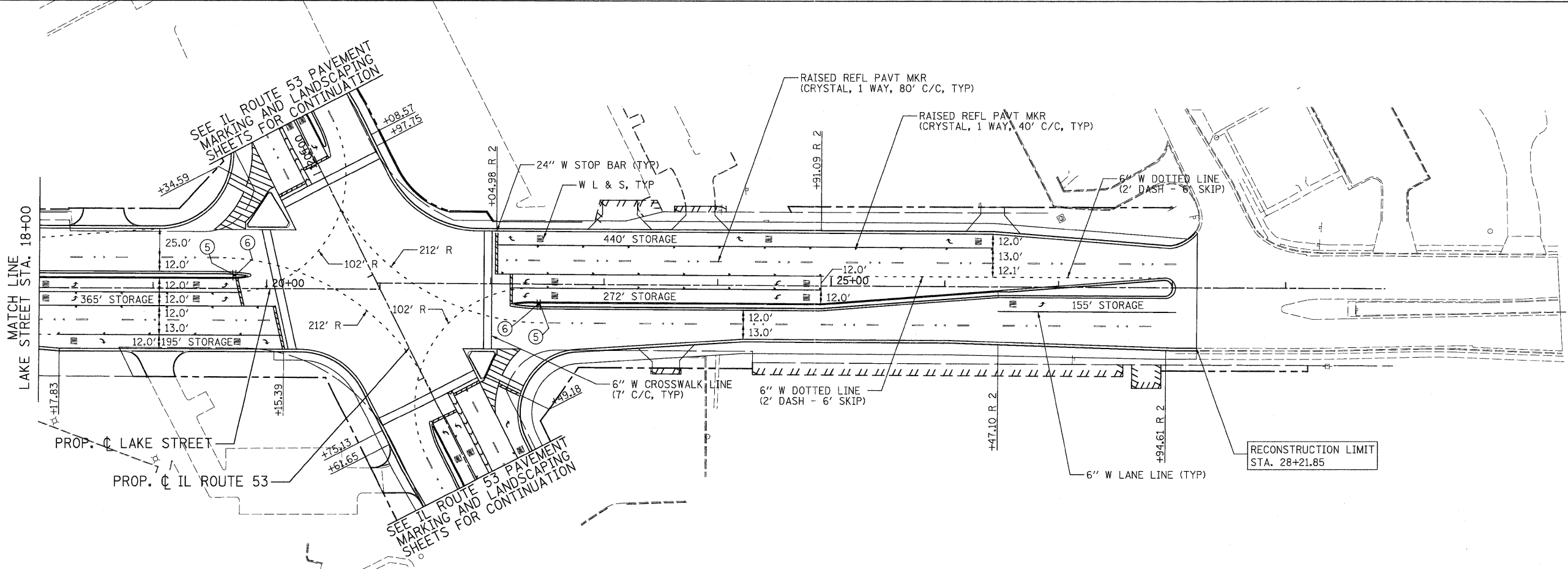


- NOTE:
1. FINAL PAVEMENT MARKING ON CONCRETE PAVEMENT SHALL BE POLYUREA PAVEMENT MARKING.
 2. FINAL PAVEMENT MARKING ON HMA PAVEMENT SURFACE SHALL BE THERMOPLASTIC PAVEMENT MARKING.
 3. THE CONTRACTOR SHALL CONTACT DON CHIARUGI AT 847-741-9857 TWO WEEKS PRIOR TO INSTALLING FINAL PAVEMENT MARKINGS.

RECONSTRUCTION LIMIT
STA. 12+84.66



RECONSTRUCTION LIMIT
STA. 28+21.85

PATRICK ENGINEERING INC.
4870 VARSITY DRIVE
LISLE, IL 60532
patrickengineering.com

USER NAME = Rchwj_Ls10
PLOT CONFIG = PDF@reg_Large.plt
PLOT SCALE = 1:50
PLOT DATE = 12/3/2010

DESIGNED - EJB
DRAWN - EJB
CHECKED - CPK
DATE - 12/3/2010

REVISED -
REVISED -
REVISED -
REVISED -



**LAKE STREET
PAVEMENT MARKING & SIGNING PLAN**

SCALE: 1"=50' SHEET PMK-11 OF 14 STA. TO STA.

F.A. RTE.	SECTION	COUNTY	TOTAL SHEETS	SHEET NO.
2578	532B	DUPAGE	781	332
CONTRACT NO. 60477				
FED. ROAD DIST. NO.		ILLINOIS FED. AID PROJECT		

G:\1001\9356_A8_IL53\Drawings\CADD Sheets\101\39797-ah-pmk_332.dgn