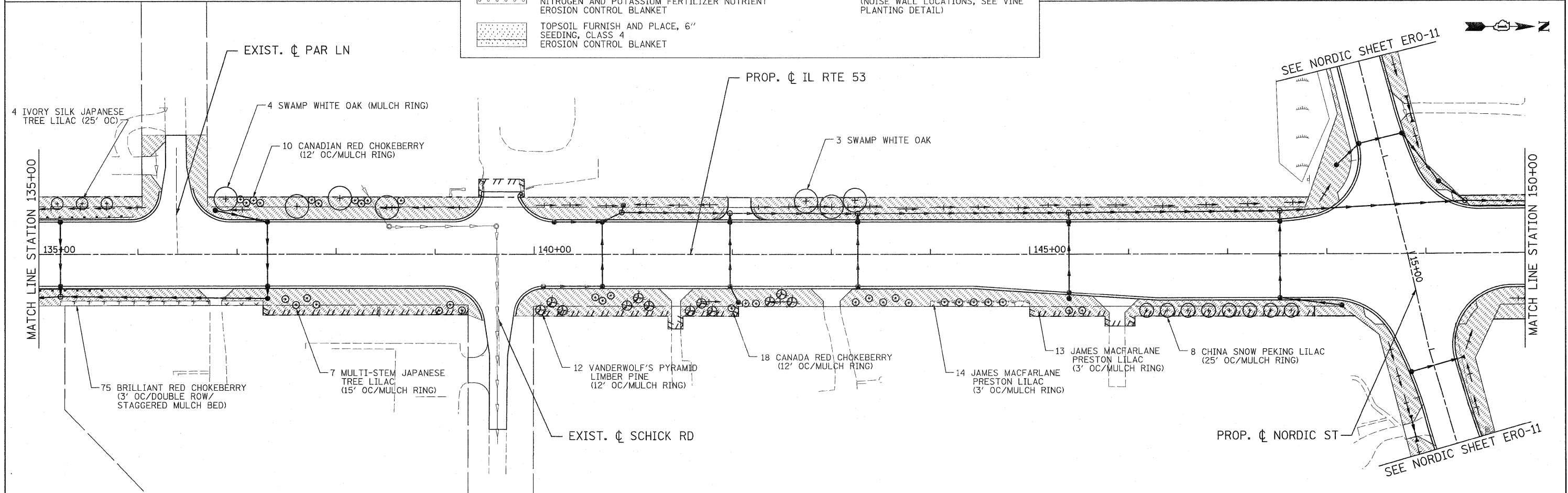


LEGEND:

	TOPSOIL FURNISH AND PLACE, 4" SODDING, SALT TOLERANT NITROGEN AND POTASSIUM FERTILIZER NUTRIENT		TOPSOIL FURNISH AND PLACE, 8" SEEDING, CLASS 4 EROSION CONTROL BLANKET (ADJACENT TO WETLANDS)
	TOPSOIL FURNISH AND PLACE, 24" SEEDING, CLASS 2A NITROGEN AND POTASSIUM FERTILIZER NUTRIENT EROSION CONTROL BLANKET		TOPSOIL FURNISH AND PLACE, 12" COMPOST FURNISH AND PLACE, 2" (NOISE WALL LOCATIONS, SEE VINE PLANTING DETAIL)
	TOPSOIL FURNISH AND PLACE, 6" SEEDING, CLASS 4 EROSION CONTROL BLANKET		



 PATRICK ENGINEERING INC. 4970 VARSITY DRIVE LISLE, IL 60532 patrickengineering.com	USER NAME = ckorstan(Lisle_R)	DESIGNED - D.DOERFLER	REVISED -	 Illinois Department of Transportation	ILLINOIS ROUTE 53 LANDSCAPING DETAILS			F.A.U. RTE. 2578	SECTION 532B	COUNTY	TOTAL SHEETS 781	SHEET NO. 339
	PLOT CONFIG= PDF(Grey_Large).plt	DRAWN - J.MACKE	REVISED -		SCALE: 1"=50'	SHEET LCPE-4 OF 13	STA. 120+00 TO STA. 150+00	CONTRACT NO. 60477				
	PLOT SCALE = 1:800	CHECKED - A.JAMES	REVISED -					FED. ROAD DIST. NO. ILLINOIS FED. AID PROJECT				
	PLOT DATE = 1/25/2011	DATE - 01/31/2011	REVISED -									

G:\DOT\9356_A0_(IL53)\Drawings\CADD Sheets\019139797-shr-Indsep_339.dgn