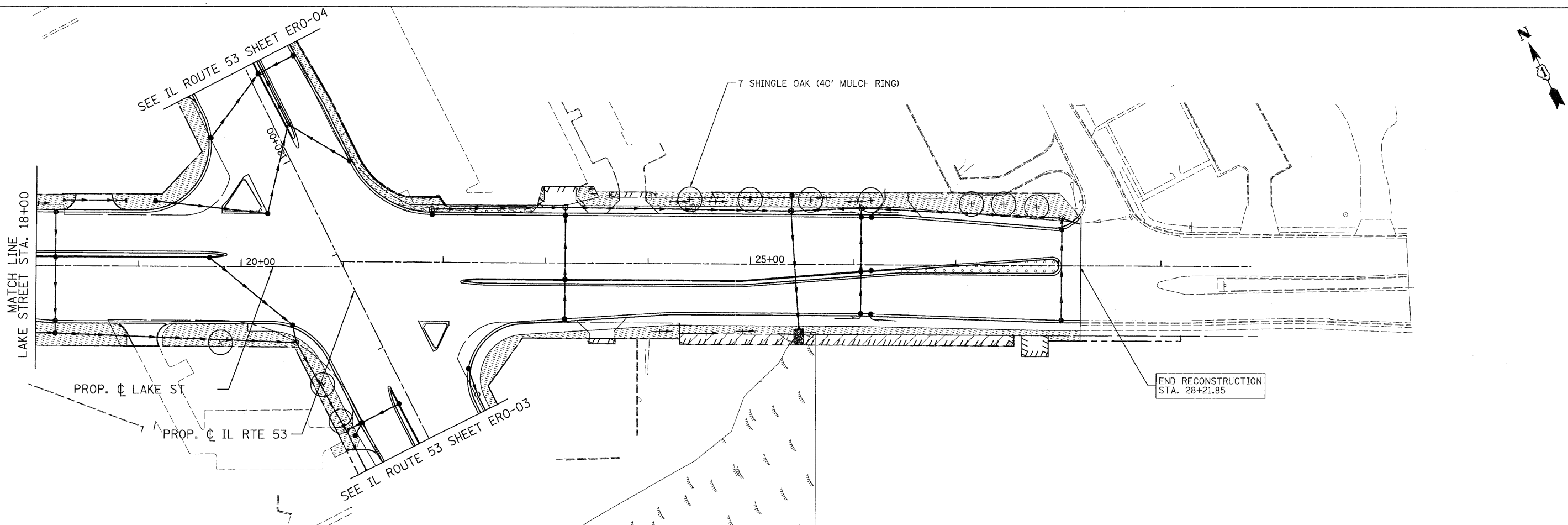


LEGEND:

	TOPSOIL FURNISH AND PLACE, 4" SODDING, SALT TOLERANT NITROGEN AND POTASSIUM FERTILIZER NUTRIENT		TOPSOIL FURNISH AND PLACE, 8" SEEDING, CLASS 4 EROSION CONTROL BLANKET (ADJACENT TO WETLANDS)
	TOPSOIL FURNISH AND PLACE, 24" SEEDING, CLASS 2A NITROGEN AND POTASSIUM FERTILIZER NUTRIENT EROSION CONTROL BLANKET		TOPSOIL FURNISH AND PLACE, 12" COMPOST FURNISH AND PLACE, 2" (NOISE WALL LOCATIONS, SEE VINE PLANTING DETAIL)
	TOPSOIL FURNISH AND PLACE, 6" SEEDING, CLASS 4 EROSION CONTROL BLANKET		



PATRICK ENGINEERING INC. 4970 VARSITY DRIVE LISLE, IL 60532 patrickengineering.com	USER NAME = Rdeq.Lis1e	DESIGNED - D. DOERFLER	REVISED -	Illinois Department of Transportation	U.S. ROUTE 20 (LAKE STREET) LANDSCAPING DETAILS		F.A. RTE. 2578	SECTION 532B	COUNTY	TOTAL SHEETS 781	SHEET NO. 345
	PLOT CONFIG = PDF(Grey, Large).plt	DRAWN - C. HELLAND	REVISED -				DUPAGE	CONTRACT NO. 60477			
	PLOT SCALE = 1:50	CHECKED - A. JAMES	REVISED -		SCALE: 1"=50'	SHEET ERO-10 OF 13	STA. 12+84.66 TO STA. 28+21.85	FED. ROAD DIST. NO. [ILLINOIS] FED. AID PROJECT			
	PLOT DATE = 12/3/2010	DATE - 12/3/2010	REVISED -								

G:\IDOT\9386_A8_(IL53)\Drawings\CADD Sheets\019139797-ah-Indocp_345.dgn