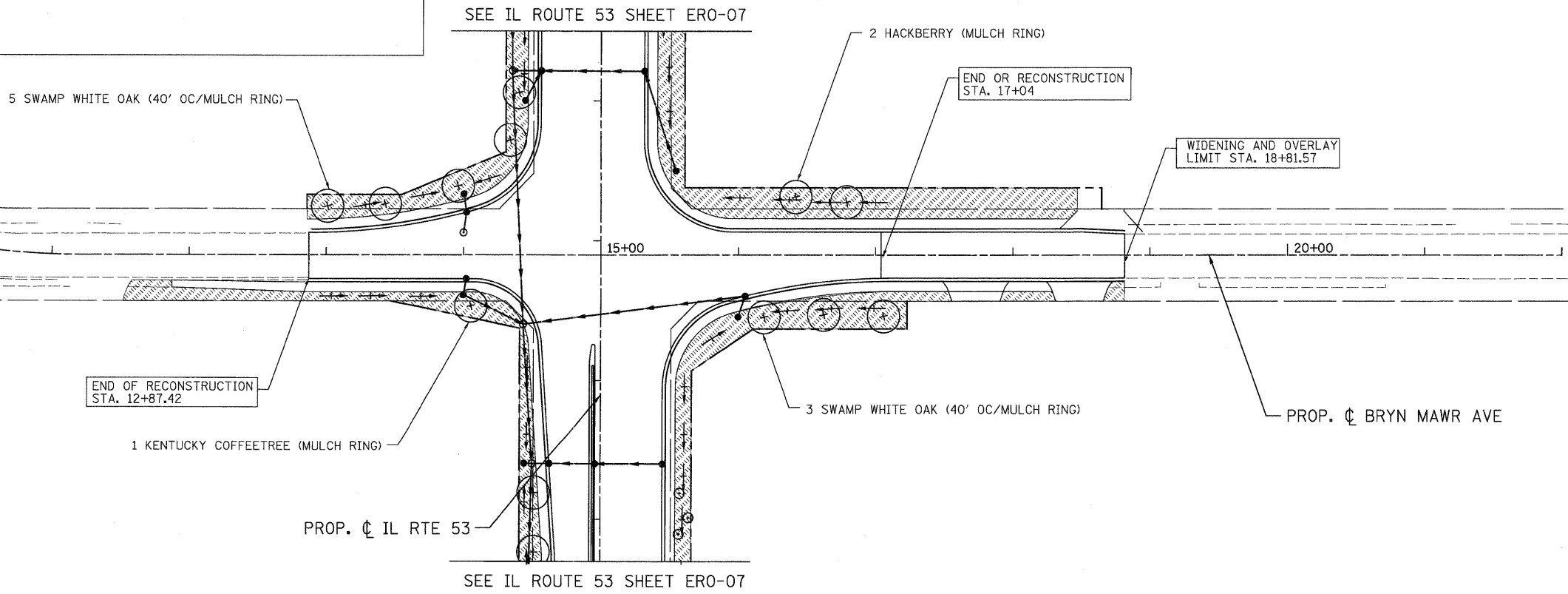
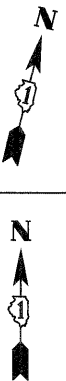


**LEGEND:**

- |  |  |  |  |
|--|--|--|--|
|  | TOPSOIL FURNISH AND PLACE, 4"<br>SODDING, SALT TOLERANT<br>NITROGEN AND POTASSIUM FERTILIZER NUTRIENT                        |  | TOPSOIL FURNISH AND PLACE, 8"<br>SEEDING, CLASS 4<br>EROSION CONTROL BLANKET<br>(ADJACENT TO WETLANDS)                 |
|  | TOPSOIL FURNISH AND PLACE, 24"<br>SEEDING, CLASS 2A<br>NITROGEN AND POTASSIUM FERTILIZER NUTRIENT<br>EROSION CONTROL BLANKET |  | TOPSOIL FURNISH AND PLACE, 12"<br>COMPOST FURNISH AND PLACE, 2"<br>(NOISE WALL LOCATIONS, SEE VINE<br>PLANTING DETAIL) |
|  | TOPSOIL FURNISH AND PLACE, 6"<br>SEEDING, CLASS 4<br>EROSION CONTROL BLANKET   |  |  |

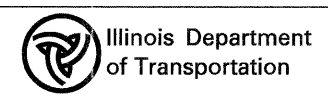


**PATRICK ENGINEERING INC.**  
4970 VARSITY DRIVE  
LISLE, IL 60532  
patrickengineering.com

USER NAME = Rdyj.Lisle  
PLOT CONFIG = POFI@reg.Largel.plt  
PLOT SCALE = 1:500  
PLOT DATE = 12/3/2010

DESIGNED - D. DOERFLER  
DRAWN - C. HELLAND  
CHECKED - A. JAMES  
DATE - 12/3/2010

REVISED -  
REVISED -  
REVISED -  
REVISED -



**NORDIC ROAD AND BRYN MAWR AVENUE  
LANDSCAPING DETAILS**

SCALE: 1"=50' SHEET EROS 11 OF 13 STA. TO STA.

F.A. RTE. 2578	SECTION 532B	COUNTY DUPAGE	TOTAL SHEETS 781	SHEET NO. 346
CONTRACT NO. 60477				
FED. ROAD DIST. NO. ILLINOIS FED. AID PROJECT				

G:\DOT\9356.A0\IL53\Drawings\CADD Sheets\019139797-sh-t-1ndsop\_346.dgn