

WATER MAIN PIPES

WM-P12
65 L.F. OF 12" WATER MAIN (RJT)

WM-P13
535 L.F. OF 12" WATER MAIN (RJT)
INSTALLED BY HORIZONTAL DIRECTIONAL DRILLING METHODS.
TERMINATE LOCATOR WIRE IN WM-V14 AND IN WM-V15A.

WM-P14
NOT USED

WM-P15
120 L.F. OF 12" WATER MAIN (RJT)

WM-P16 THRU WM-P19
NOT USED

PROVIDE A MINIMUM OF 18" SEPARATION BETWEEN TOP OF WATER MAIN AND BOTTOM OF STORM SEWER

WATER MAIN FITTINGS (RJT)

WM-F28
12" - 45° BEND

WM-F29
12" - 90° BEND

WM-F30
NOT USED

WM-F31
12" - 90° BEND

WM-F32A
12" - 45° BEND, ROLLED UP

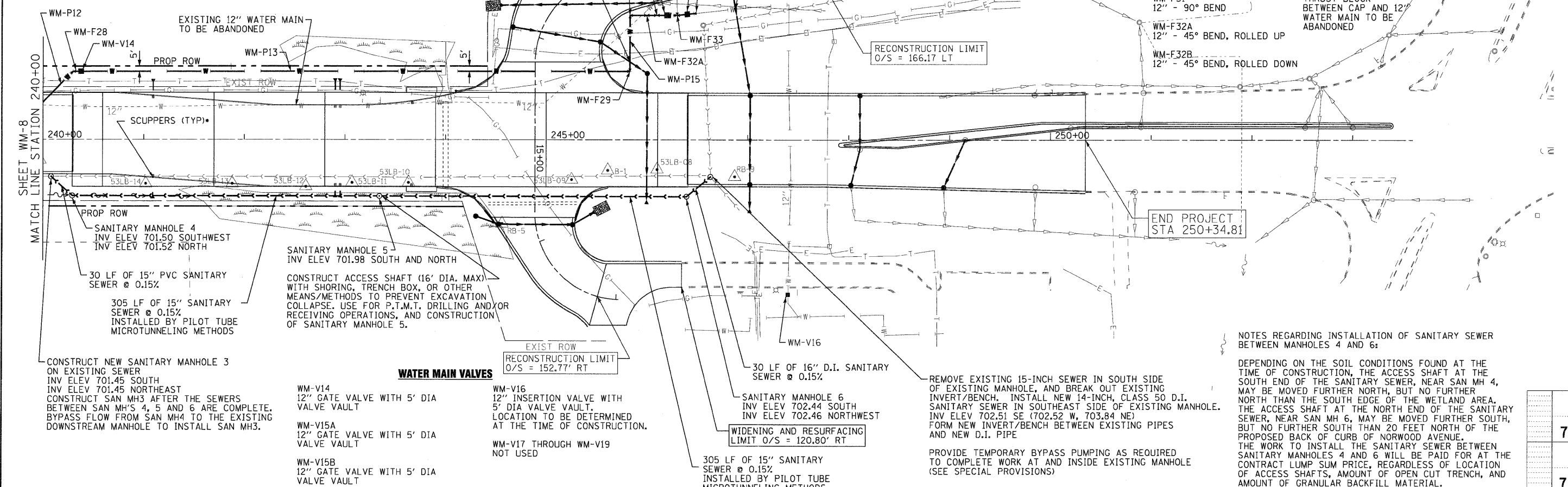
WM-F32B
12" - 45° BEND, ROLLED DOWN

WM-F33
12" X 12" TEE WITH CONCRETE THRUST BLOCK

WM-F34
12" SLEEVE

WM-F35
12" CAP WITH CONCRETE THRUST BLOCK BETWEEN CAP AND 12" WATER MAIN TO BE ABANDONED

WM-F36 THROUGH WM-F39
NOT USED

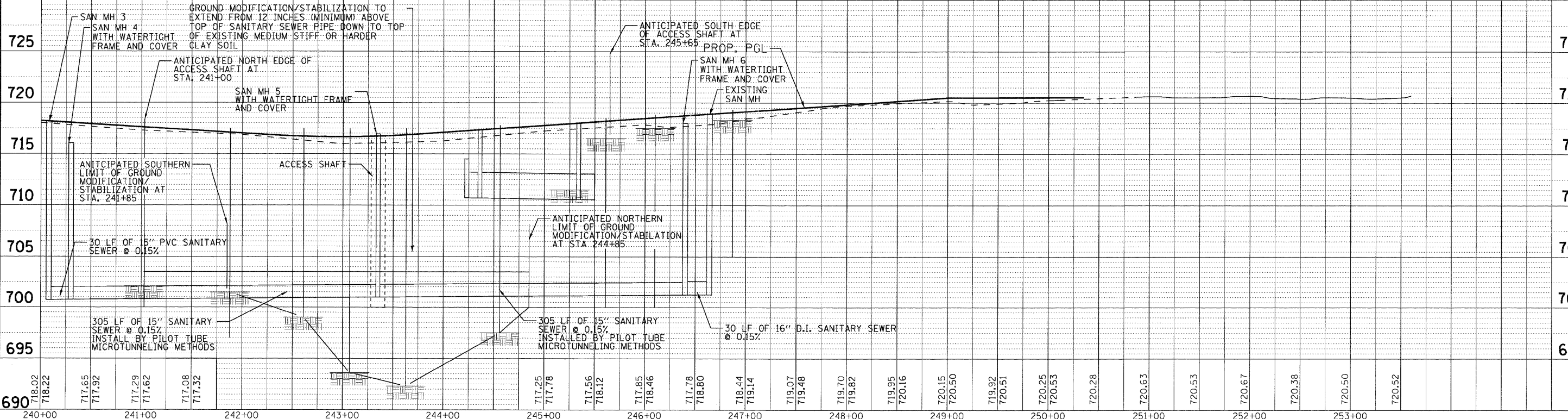


NOTES REGARDING INSTALLATION OF SANITARY SEWER BETWEEN MANHOLES 4 AND 6:

DEPENDING ON THE SOIL CONDITIONS FOUND AT THE TIME OF CONSTRUCTION, THE ACCESS SHAFT AT THE SOUTH END OF THE SANITARY SEWER, NEAR SAN MH 4, MAY BE MOVED FURTHER NORTH, BUT NO FURTHER NORTH THAN THE SOUTH EDGE OF THE WETLAND AREA. THE ACCESS SHAFT AT THE NORTH END OF THE SANITARY SEWER, NEAR SAN MH 6, MAY BE MOVED FURTHER SOUTH, BUT NO FURTHER SOUTH THAN 20 FEET NORTH OF THE PROPOSED BACK OF CURB OF NORWOOD AVENUE. THE WORK TO INSTALL THE SANITARY SEWER BETWEEN SANITARY MANHOLES 4 AND 6 WILL BE PAID FOR AT THE CONTRACT LUMP SUM PRICE, REGARDLESS OF LOCATION OF ACCESS SHAFTS, AMOUNT OF OPEN CUT TRENCH, AND AMOUNT OF GRANULAR BACKFILL MATERIAL.

DATE	
BY	
REVIEWED	
PLANNED	
NOTED	
NO.	

DATE	
BY	
REVIEWED	
PLANNED	
NOTED	
NO.	



735
730
725
720
715
710
705
700
695

	USER NAME = (username)	DESIGNED - SMV	REVISED - 8-27-10 VILLAGE REVIEW		ILLINOIS ROUTE 53 WATER AND SEWER REPLACEMENT PLAN AND PROFILE		F.A.U. RTE.	SECTION	COUNTY	TOTAL SHEETS	SHEET NO.
	PLOT CONFIG = PDF22X34.plt	DRAWN - UKB	REVISED - 11-2-10 I.D.O.T. REVIEW		2578	5328	DUPAGE	781	357		
	PLOT SCALE = 1:50	CHECKED - SMV	REVISED -		SCALE: 1"=50'		SHEET NO. WM-9 OF 17	STA. 240+00 TO STA. 250+12.07	CONTRACT NO. 60477		
	PLOT DATE = 11/24/2010 9:12:24 AM	DATE - 7-30-2010	REVISED -		FED. ROAD DIST. NO.		ILLINOIS FED. AID PROJECT				

I:\Crystal Lake\1745\180547-Rt 53 W and 53A\DD-SURVEY\DRAWINGS\DGNS\88-WM-PP-sht.270.dgn