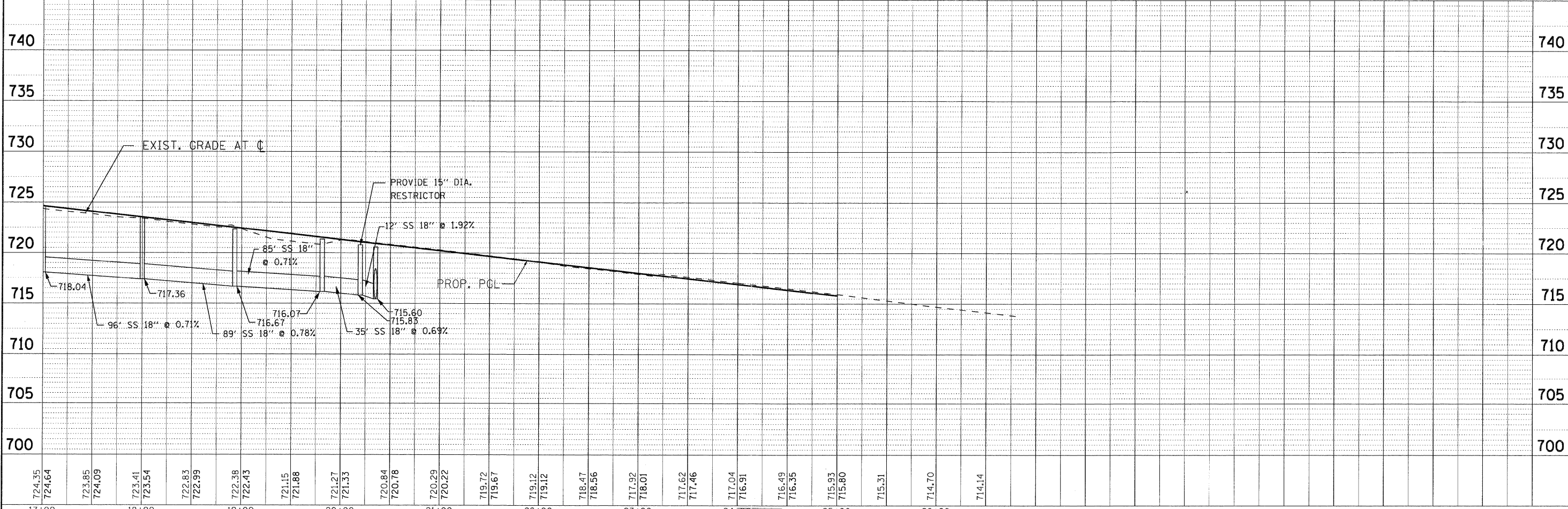
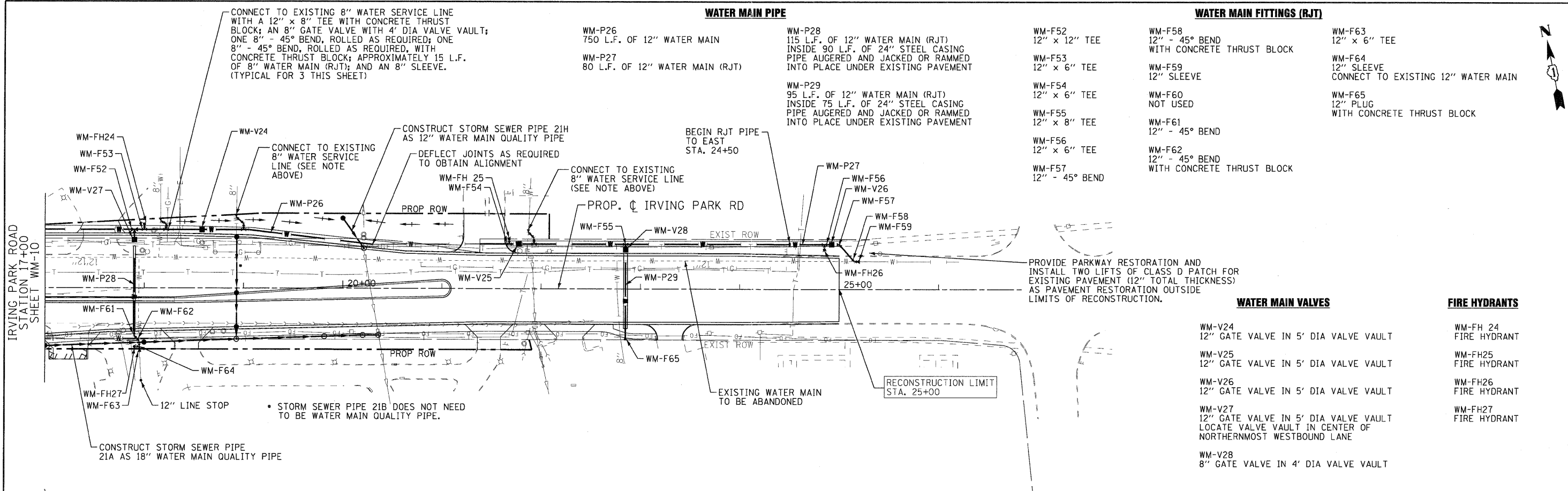


DATE	
BY	
REVISIONS	
NO.	DESCRIPTION
1	ISSUED FOR PERMITS
2	REVISED PER COMMENTS
3	REVISED PER COMMENTS
4	REVISED PER COMMENTS
5	REVISED PER COMMENTS
6	REVISED PER COMMENTS
7	REVISED PER COMMENTS
8	REVISED PER COMMENTS
9	REVISED PER COMMENTS
10	REVISED PER COMMENTS

DATE	
BY	
REVISIONS	
NO.	DESCRIPTION
1	ISSUED FOR PERMITS
2	REVISED PER COMMENTS
3	REVISED PER COMMENTS
4	REVISED PER COMMENTS
5	REVISED PER COMMENTS
6	REVISED PER COMMENTS
7	REVISED PER COMMENTS
8	REVISED PER COMMENTS
9	REVISED PER COMMENTS
10	REVISED PER COMMENTS



- WATER MAIN PIPE**
- WM-P26 750 L.F. OF 12" WATER MAIN
 - WM-P27 80 L.F. OF 12" WATER MAIN (RJT)
 - WM-P28 115 L.F. OF 12" WATER MAIN (RJT) INSIDE 90 L.F. OF 24" STEEL CASING PIPE AUGERED AND JACKED OR RAMMED INTO PLACE UNDER EXISTING PAVEMENT
 - WM-P29 95 L.F. OF 12" WATER MAIN (RJT) INSIDE 75 L.F. OF 24" STEEL CASING PIPE AUGERED AND JACKED OR RAMMED INTO PLACE UNDER EXISTING PAVEMENT
- WATER MAIN FITTINGS (RJT)**
- WM-F52 12" x 12" TEE
 - WM-F53 12" x 6" TEE
 - WM-F54 12" x 6" TEE
 - WM-F55 12" x 8" TEE
 - WM-F56 12" x 6" TEE
 - WM-F57 12" - 45° BEND
 - WM-F58 12" - 45° BEND WITH CONCRETE THRUST BLOCK
 - WM-F59 12" SLEEVE
 - WM-F60 NOT USED
 - WM-F61 12" - 45° BEND
 - WM-F62 12" - 45° BEND WITH CONCRETE THRUST BLOCK
 - WM-F63 12" x 6" TEE
 - WM-F64 12" SLEEVE CONNECT TO EXISTING 12" WATER MAIN
 - WM-F65 12" PLUG WITH CONCRETE THRUST BLOCK

- WATER MAIN VALVES**
- WM-V24 12" GATE VALVE IN 5' DIA VALVE VAULT
 - WM-V25 12" GATE VALVE IN 5' DIA VALVE VAULT
 - WM-V26 12" GATE VALVE IN 5' DIA VALVE VAULT
 - WM-V27 12" GATE VALVE IN 5' DIA VALVE VAULT LOCATE VALVE VAULT IN CENTER OF NORTHERNMOST WESTBOUND LANE
 - WM-V28 8" GATE VALVE IN 4' DIA VALVE VAULT
- FIRE HYDRANTS**
- WM-FH 24 FIRE HYDRANT
 - WM-FH25 FIRE HYDRANT
 - WM-FH26 FIRE HYDRANT
 - WM-FH27 FIRE HYDRANT

 	USER NAME = (username)	DESIGNED - SMV	REVISED - 8-27-10 VILLAGE REVIEW		F.A.U. RTE. 2578	SECTION 532B	COUNTY	TOTAL SHEETS 781	SHEET NO. 359
	PLOT CONFIG = PDF22X34.plt	DRAWN - UKB	REVISED -		SCALE: 1"=50'	DUPAGE	ILLINOIS	FED. AID PROJECT	CONTRACT NO. 60477
	PLOT SCALE = 1:50	CHECKED - SMV	REVISED -		SHEET NO. WM-11 OF 17	CONTRACT NO. 60477			
	PLOT DATE = 11/24/2010 9:16:35 AM	DATE - 7-30-2010	REVISED -		STA. 17+00 TO STA. 24+45				

I:\Crystal Lake\11TASV\110547-Rt 53 W and S\CA00-SURVEY\DRAWINGS\DDNS\B&W-WM-PP-sht.276.dgn