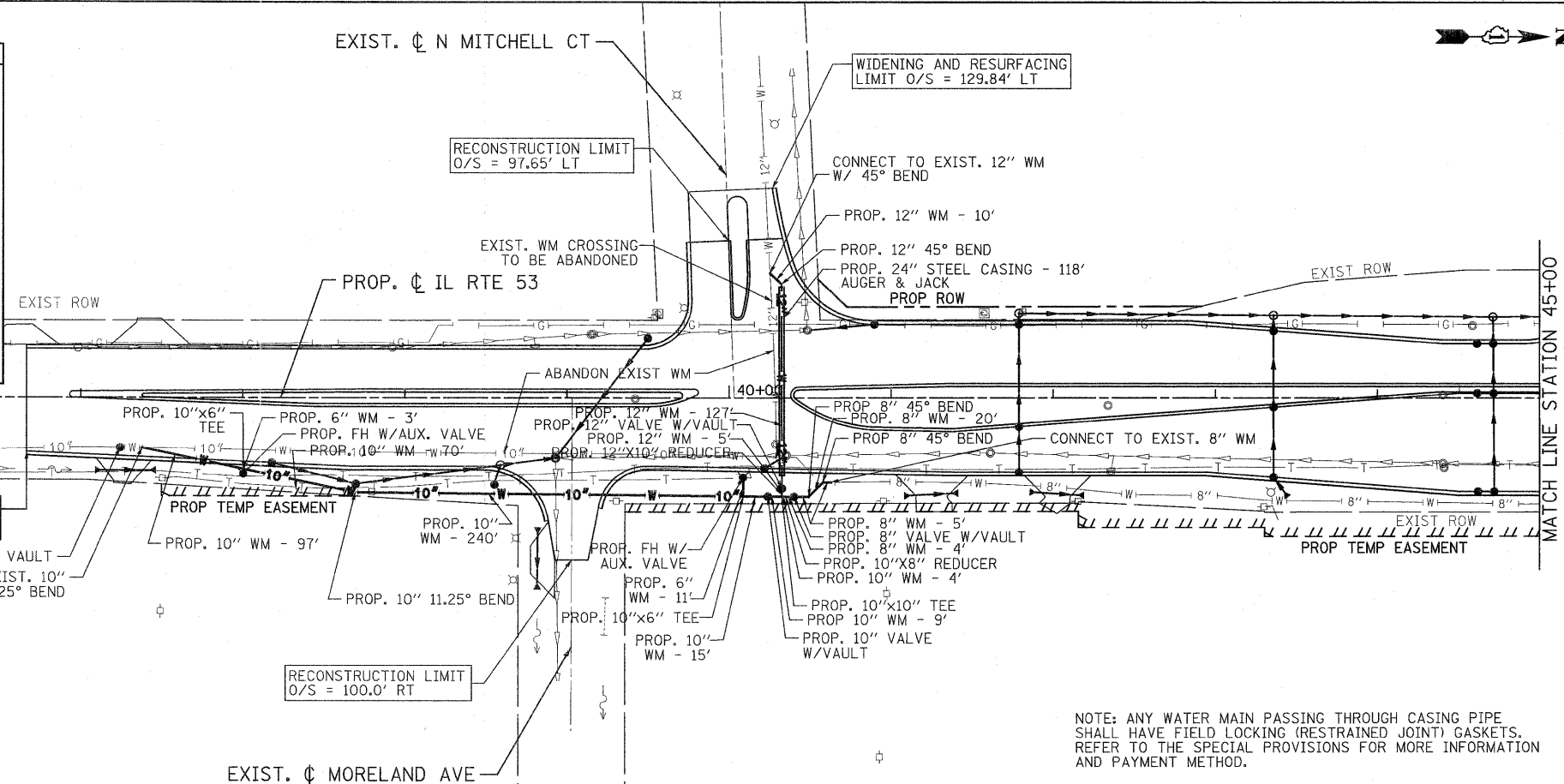
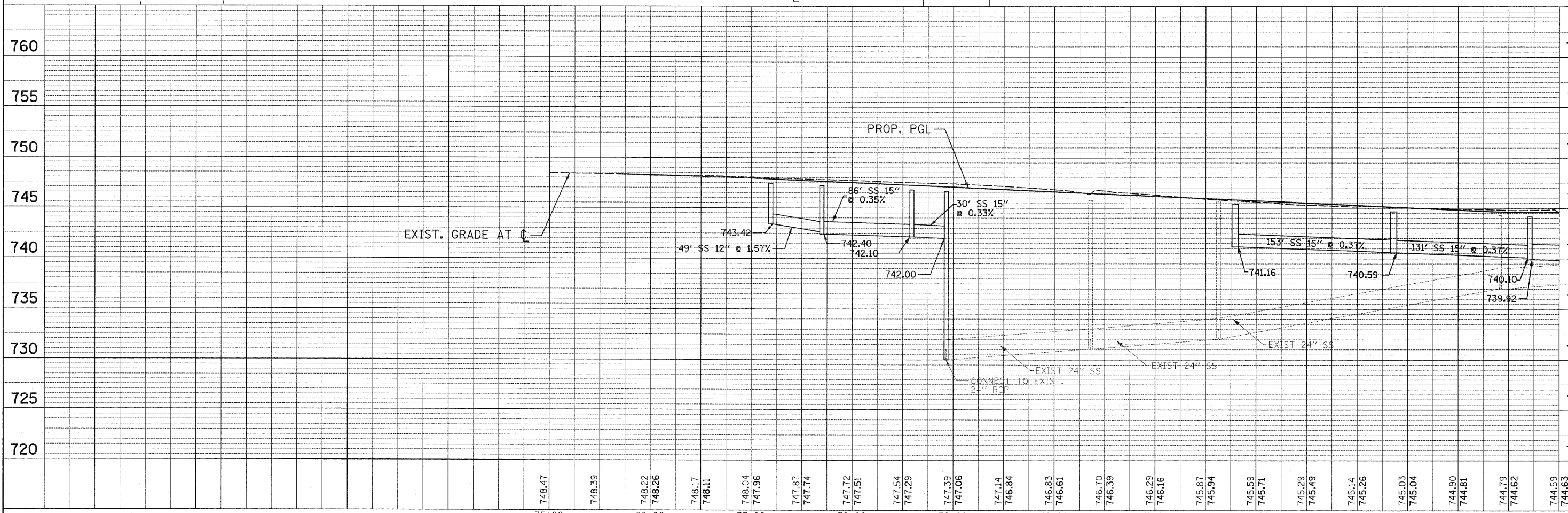


LEGEND:

BOUNDARY LINES/SYMBOLS	EXISTING	PROPOSED	BOUNDARY LINES/SYMBOLS	EXISTING	PROPOSED
REFERENCE LINE/CENTERLINE AND STATIONING	— 0+00	— 0+00	MANHOLE	○	⊙
WATER MAIN	— W	— W	FLARED END SECTION	△	△
WATER VALVE	○	●	DITCH	— D	— D
FIRE HYDRANT	○	●	RIPRAP	■	■
RIGHT OF WAY LINE	— —	— —	GAS LINE	— G	— G
TEMPORARY EASEMENT	///	///	TELEPHONE LINE	— T	— T
PERMANENT EASEMENT	////	////	AERIAL LINE	— A	— A
STORM SEWER	— S	— S	SANITARY SEWER	— SS	— SS
CATCH BASIN	○	●	CABLE TELEVISION	— CTV	— CTV
HEADWALL/ENDWALL	○	●	UNDERGROUND ELECTRIC	— E	— E
OPEN LID MANHOLE/INLET	○	●	WETLAND	■	■
SWALE	— S	— S			



NOTE: ANY WATER MAIN PASSING THROUGH CASING PIPE SHALL HAVE FIELD LOCKING (RESTRAINED JOINT) GASKETS. REFER TO THE SPECIAL PROVISIONS FOR MORE INFORMATION AND PAYMENT METHOD.



DATE	BY
DATE	BY
DATE	BY

DATE	BY
DATE	BY
DATE	BY

<p>PATRICK ENGINEERING INC. 4570 VARSITY DRIVE LISLE, IL 60532 patrickengineering.com</p>	USER NAME = ddoerfler\ddoerfler PLOT CONFIG = PDF(Grey-Large).plt PLOT SCALE = 1:50 PLOT DATE = 1/28/2011 3:48:19 PM	DESIGNED - D.DOERFLER DRAWN - D.DOERFLER CHECKED - A.JAMES DATE - 1/31/2010	REVISED - REVISED - REVISED - REVISED -	<p>Illinois Department of Transportation</p>	<p>ILLINOIS ROUTE 53 WATERMAIN RELOCATION PLAN</p>	F.A.U. RTE. 2578 SECTION 532B COUNTY DUPAGE TOTAL SHEETS 781 SHEET NO. 366A CONTRACT NO. 60477
	SCALE: 1"=50' SHEET NO. WM 1 OF 8 STA. 35+66.56 TO STA. 45+00		FED. ROAD DIST. NO. ILLINOIS FED. AID PROJECT			
	RELOCATION SHEETS\Watermain_1.dgn		CONTRACT NO. 60477			
	PATRICK ENGINEERING INC.		CONTRACT NO. 60477			