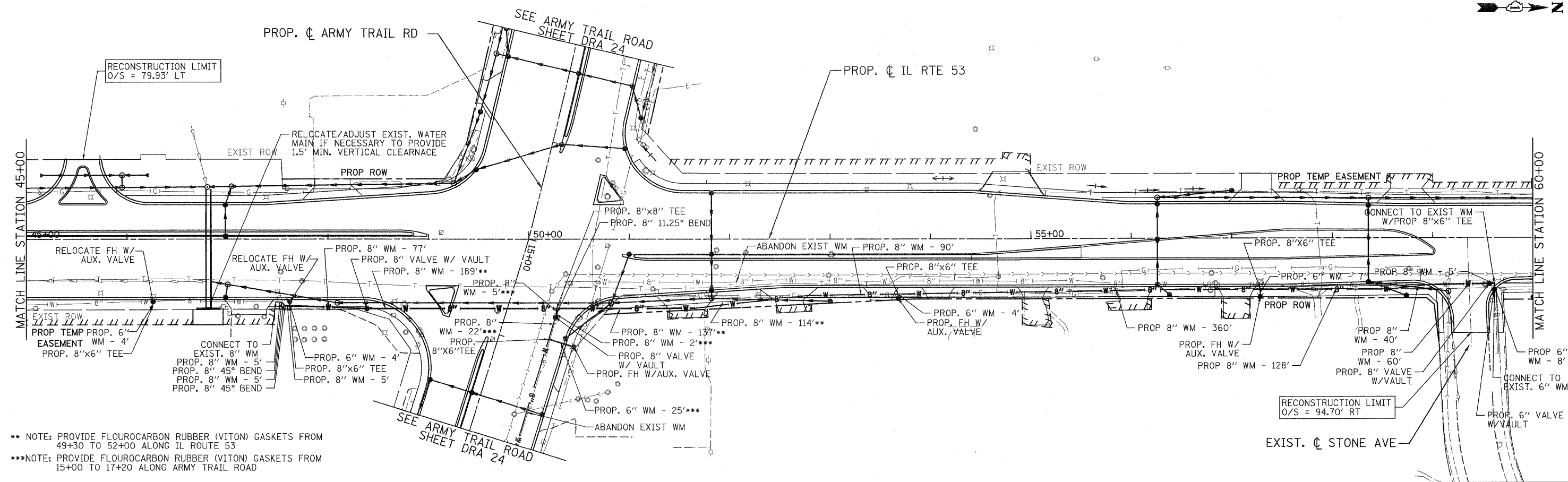


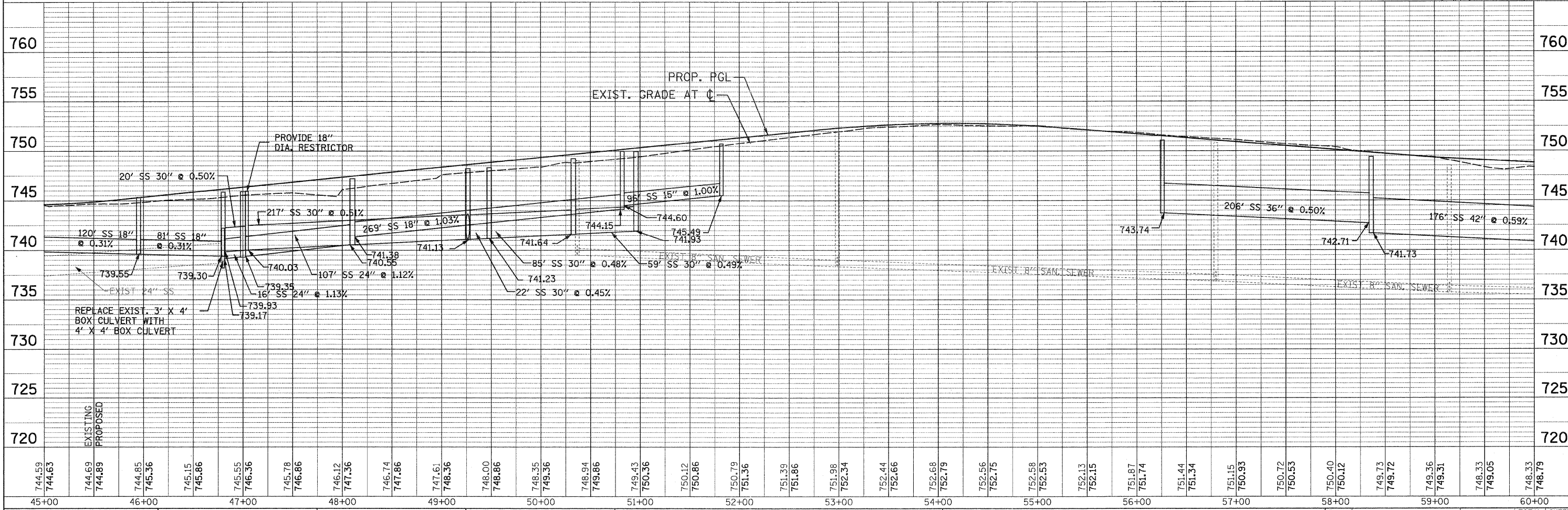


DATE	
BY	
SURVEYED	
ALIGNED	
CHECKED	
NO. OF W/VA CHECKED	
ROAD FILE NAME	
NO.	



** NOTE: PROVIDE FLOUROCARBON RUBBER (VITON) GASKETS FROM 49+30 TO 52+00 ALONG IL ROUTE 53
 ***NOTE: PROVIDE FLOUROCARBON RUBBER (VITON) GASKETS FROM 15+00 TO 17+20 ALONG ARMY TRAIL ROAD

DATE	
BY	
SURVEYED	
GRADES CHECKED	
BLM. NOTED	
STRUCTURE NOTATIONS CHECKED	
NO.	



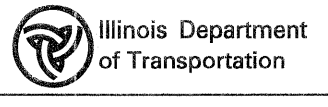
744.59 744.63	744.69 744.89	744.85 745.36	745.15 745.86	745.55 746.36	745.78 746.86	746.12 747.36	746.74 747.86	747.61 748.36	748.00 748.86	748.35 749.36	748.94 749.86	749.43 750.36	750.12 750.86	750.79 751.36	751.39 751.86	751.98 752.34	752.44 752.86	752.68 752.79	752.56 752.75	752.58 752.53	752.13 752.15	751.87 751.74	751.44 751.34	751.15 750.93	750.72 750.53	750.40 750.12	749.73 749.72	749.36 749.31	748.33 749.05	748.33 748.79
45+00	46+00	47+00	48+00	49+00	50+00	51+00	52+00	53+00	54+00	55+00	56+00	57+00	58+00	59+00	60+00															

PATRICK ENGINEERING INC.
 4970 VARSITY DRIVE
 LISLE, IL 60532
 patrickengineering.com

USER NAME = ddoerfler\rdwg.Lisla
 PLOT CONFIG = PDF\Grey_Large.plt
 PLOT SCALE = 1:50
 PLOT DATE = 1/28/2011 3:49:26 PM

DESIGNED - D.DOERFLER
 DRAWN - D.DOERFLER
 CHECKED - A.JAMES
 DATE - 1/31/2010

REVISED -
 REVISED -
 REVISED -
 REVISED -



**ILLINOIS ROUTE 53
 WATERMAIN RELOCATION PLAN**

SCALE: 1"=50'
 SHEET NO. WM 2 OF 8
 STA. 45+00 TO STA. 60+00

F.A.U. RTE. 2578	SECTION 532B	COUNTY DUPAGE	TOTAL SHEETS 781	SHEET NO. 366B
CONTRACT NO. 60477			ILLINOIS FED. AID PROJECT	