

F.A. RTE.	SECTION	COUNTY	TOTAL SHEETS	SHEET NO.
2578	532B	DU PAGE	781	367
		ILLINOIS	CONTRACT NO. 60477	

STATE OF ILLINOIS

DEPARTMENT OF TRANSPORTATION

DIVISION OF HIGHWAYS

PLANS FOR PROPOSED HIGHWAY

FAP ROUTE 870 / FAU ROUTE 2578 (ILLINOIS ROUTE 53)

ARMY TRAIL ROAD TO ELGIN O'HARE EXPRESSWAY

ROADWAY RECONSTRUCTION, ADDITIONAL LANES, DRY LAND BRIDGE CONSTRUCTION, TRAFFIC SIGNAL MODERNIZATION AND INTERCONNECT

SECTION 532B

PROJECT NO. _____

DUPAGE COUNTY

C-91-397-97

D-91-397-97



PATRICK ENGINEERING INC.
 4970 VARSITY DRIVE
 LISLE, IL 60532
 patrickengineering.com

FOR INDEX OF SHEETS, SEE SHEET NO. 2

HIGHWAY CLASSIFICATION
 PRINCIPAL ARTERIAL ROUTE :
 (FROM ARMY TRAIL ROAD TO LAKE STREET)
 SUBURBAN MINOR ARTERIAL :
 (FROM LAKE STREET TO THE ELGIN-O'HARE EXPRESSWAY)

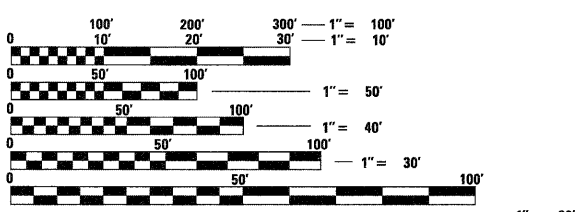
DESIGN DESIGNATION
 3500(20) ARTERIAL 14.56 (PCC-20)

2 OF 2

TRAFFIC DATA
 IL RTE 53
 2002 ADT = 14,200 - 28,800
 2020 ADT = 26,000 - 35,000

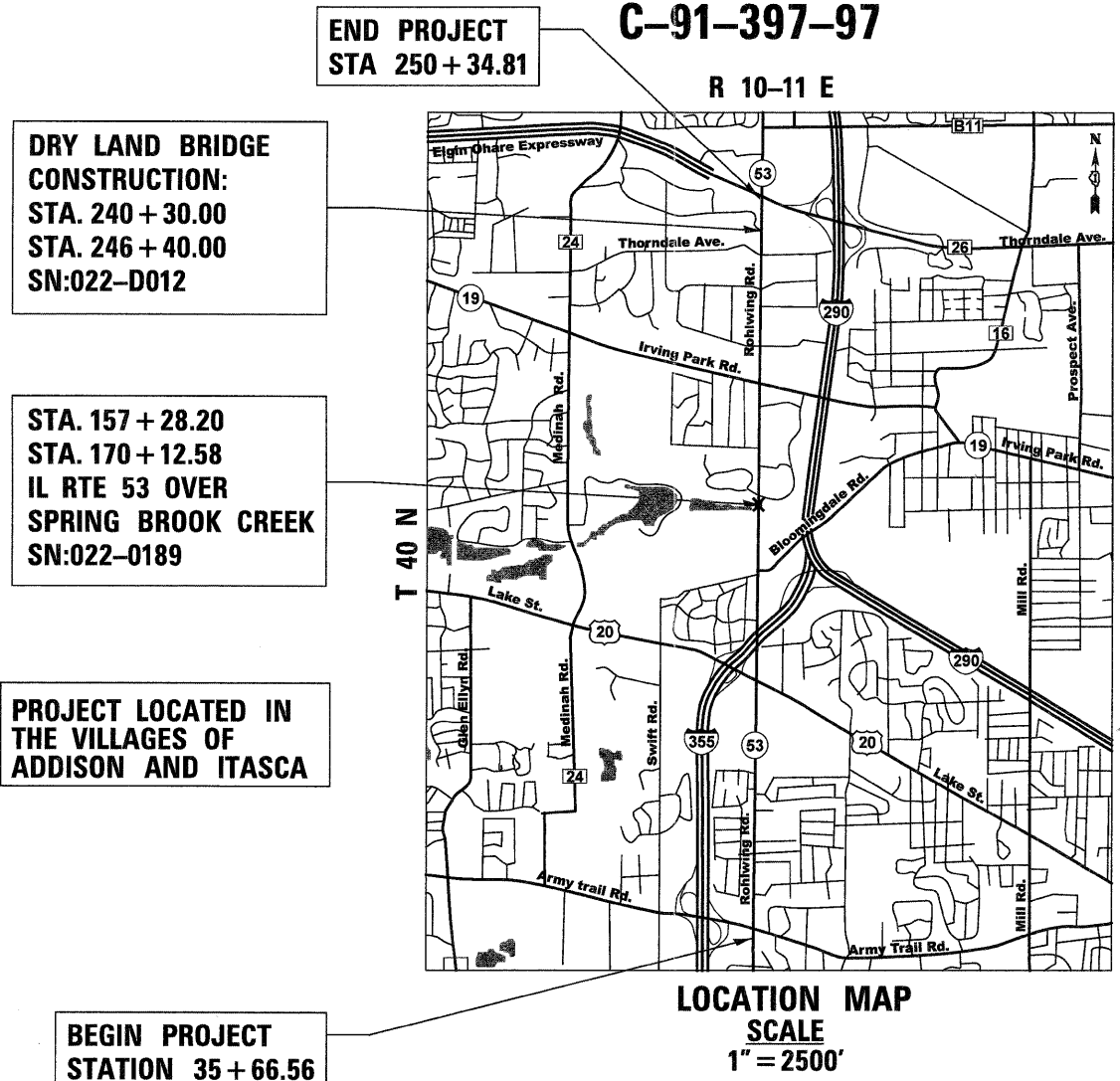
POSTED SPEED LIMIT = 40 MPH
 DESIGN SPEED = 45 MPH

PROJECT DESCRIPTION
 THE PROPOSED IMPROVEMENT CONSISTS OF THE WIDENING AND RECONSTRUCTION OF ILLINOIS ROUTE 53 ON THE EXISTING ALIGNMENT, NEW STORM SEWER SYSTEM, NOISE WALLS, DRY LAND BRIDGE, AND TRAFFIC SIGNAL MODERNIZATION.



FULL SIZE PLANS HAVE BEEN PREPARED USING STANDARD ENGINEERING SCALES. REDUCED SIZED PLANS WILL NOT CONFORM TO STANDARD SCALES. IN MAKING MEASUREMENTS ON REDUCED PLANS, THE ABOVE SCALES MAY BE USED.

J.U.L.I.E.
 JOINT UTILITY LOCATION INFORMATION FOR EXCAVATION
 1-800-892-0123 OR 811



LOCATION MAP
 SCALE
 1" = 2500'

GROSS LENGTH ILLINOIS RTE 53 = 21,468.25 FEET = 4.1 MILES
 NET LENGTH ILLINOIS RTE 53 = 21,468.25 FEET = 4.1 MILES

PRINTED BY THE AUTHORITY OF THE STATE OF ILLINOIS

CONTRACT NO. 60477

DISTRICT 1 - DESIGN/CONSULTANT SERVICES SECTION/ RAJENDRA SHAH (847) 705-4555