

SCHEDULE OF QUANTITIES

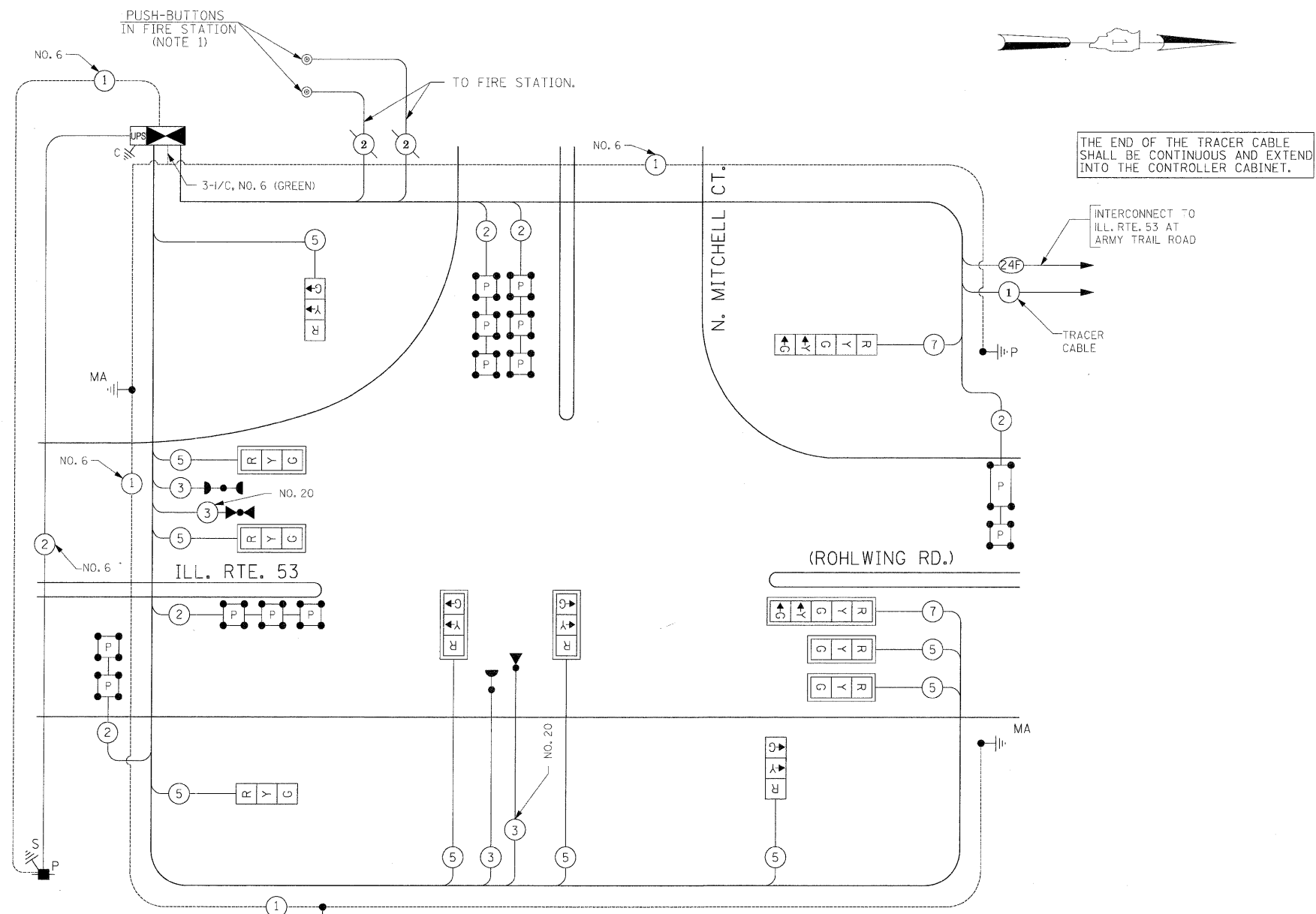
QUANTITY	UNIT	ITEM
9	SQ FT	SIGN PANEL - TYPE 1
21	SQ FT	SIGN PANEL - TYPE 2
492	FOOT	CONDUIT IN TRENCH, 2" DIA., GALVANIZED STEEL
5	FOOT	CONDUIT IN TRENCH, 2 1/2" DIA., GALVANIZED STEEL
116	FOOT	CONDUIT IN TRENCH, 3" DIA., GALVANIZED STEEL
50	FOOT	CONDUIT IN TRENCH, 4" DIA., GALVANIZED STEEL
202	FOOT	CONDUIT PUSHED, 2" DIA., GALVANIZED STEEL
186	FOOT	CONDUIT PUSHED, 4" DIA., GALVANIZED STEEL
5	EACH	HANDHOLE
1	EACH	HEAVY-DUTY HANDHOLE
1	EACH	DOUBLE HANDHOLE
663	FOOT	TRENCH AND BACKFILL FOR ELECTRICAL WORK
1	EACH	FULL-ACTUATED CONTROLLER AND TYPE IV CABINET, SPECIAL
1	EACH	TRANSCEIVER-FIBER OPTIC
280	FOOT	ELECTRIC CABLE IN CONDUIT, SIGNAL NO. 14 3C
1561	FOOT	ELECTRIC CABLE IN CONDUIT, SIGNAL NO. 14 5C
440	FOOT	ELECTRIC CABLE IN CONDUIT, SIGNAL NO. 14 7C
905	FOOT	ELECTRIC CABLE IN CONDUIT, LEAD-IN, NO. 14 1 PAIR
150	FOOT	ELECTRIC CABLE IN CONDUIT, SERVICE, NO. 6 2C
1	EACH	TRAFFIC SIGNAL POST, GALVANIZED STEEL 16 FT.
1	EACH	STEEL MAST ARM ASSEMBLY AND POLE, 28 FT.
1	EACH	STEEL MAST ARM ASSEMBLY AND POLE, 36 FT.
1	EACH	STEEL MAST ARM ASSEMBLY AND POLE, 38 FT.
4	FOOT	CONCRETE FOUNDATION, TYPE A
4	FOOT	CONCRETE FOUNDATION, TYPE C
10	FOOT	CONCRETE FOUNDATION, TYPE E 30-INCH DIAMETER
30	FOOT	CONCRETE FOUNDATION, TYPE E 36-INCH DIAMETER
3	EACH	SIGNAL HEAD, LED, 1-FACE, 3-SECTION, BRACKET MOUNTED
6	EACH	SIGNAL HEAD, LED, 1-FACE, 3-SECTION, MAST-ARM MOUNTED
1	EACH	SIGNAL HEAD, LED, 1-FACE, 5-SECTION, BRACKET MOUNTED
1	EACH	SIGNAL HEAD, LED, 1-FACE, 5-SECTION, MAST-ARM MOUNTED
7	EACH	TRAFFIC SIGNAL BACKPLATE, LOUVERED, ALUMINUM
5	EACH	INDUCTIVE LOOP DETECTOR
2	EACH	LIGHT DETECTOR
1	EACH	LIGHT DETECTOR AMPLIFIER
35	FOOT	REMOVE AND REINSTALL ELECTRIC CABLE FROM CONDUIT
1	EACH	REMOVE TEMPORARY TRAFFIC SIGNAL INSTALLATION
2	EACH	REMOVE EXISTING HANDHOLE
472	FOOT	PREFORMED DETECTOR LOOP
1	EACH	TEMPORARY TRAFFIC SIGNAL TIMING
1	EACH	SERVICE INSTALLATION - POLE MOUNTED
1	EACH	UNINTERRUPTIBLE POWER SUPPLY
586	FOOT	ELECTRIC CABLE IN CONDUIT, GROUNDING, NO. 6 1C
280	FOOT	ELECTRIC CABLE IN CONDUIT NO. 20 3/C, TWISTED, SHIELDED
1	EACH	MODIFY TEMPORARY TRAFFIC SIGNAL INSTALLATION

100% COST TO VILLAGE OF ADDISON

I.D.O.T. TRAFFIC SIGNAL INSTALLATION ELECTRICAL SERVICE REQUIREMENTS					TOTAL WATTAGE
TYPE	NO. LAMPS	INCAND.	LED	%OPERATION	
SIGNAL (RED)	11	135	17	0.50	93.5
(YELLOW)	11	135	25	0.25	68.75
(GREEN)	11	135	15	0.25	41.25
ARROW	4	135	12	0.10	4.6
PED. SIGNAL		90	25	1.00	
CONTROLLER	1	100	100	1.00	100
ILLUM. SIGN			25	0.05	
FLASHER				0.50	
ENERGY COSTS TO:					TOTAL = 308.3

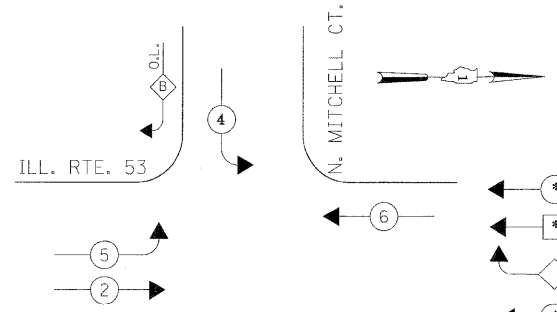
ILLINOIS DEPARTMENT OF TRANSPORTATION  
 201 WEST CENTER COURT  
 SCHAUMBURG, ILLINOIS 60196-1096  
 ENERGY SUPPLY CONTACT: CURTIS TOPPS  
 PHONE: (630) 691-4356  
 COMPANY: COMMONWEALTH EDISON

THE TRAFFIC SIGNAL CONTROL EQUIPMENT FOR THIS PROJECT SHALL BE "ECONOLITE" TO MATCH THE EXISTING ADJACENT SYSTEM.

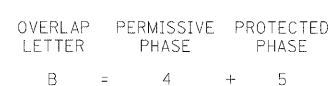


CABLE PLAN (NOT TO SCALE)

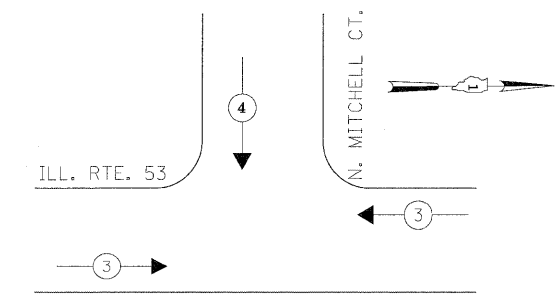
CONTROLLER SEQUENCE



PHASE DESIGNATION DIAGRAM



EMERGENCY VEHICLE PREEMPTION SEQUENCE



NOTE: THE EMERGENCY VEHICLE PREEMPTION FOR THE WEST APPROACH SHALL ALSO BE ACTIVATED VIA PUSH-BUTTONS LOCATED INSIDE THE FIRE STATION PREMISES.

PROPOSED EMERGENCY VEHICLE PREEMPTORS		
EMERGENCY VEHICLE PREEMPTOR	3	4
MOVEMENT	←	↓

STATE OF ILLINOIS DEPARTMENT OF TRANSPORTATION

CABLE PLAN, PHASE DESIGNATION DIAGRAM, EMERGENCY VEHICLE PREEMPTION SEQUENCE, SCHEDULE OF QUANTITIES  
 ILLINOIS ROUTE 53 (ROHLWING RD.) AT N. MITCHELL CT.

F.A.P. RTE.	SECTION	COUNTY	TOTAL SHEETS	SHEET NO.
2578	532B	DuPage	781	437

CONTRACT NO. 60477