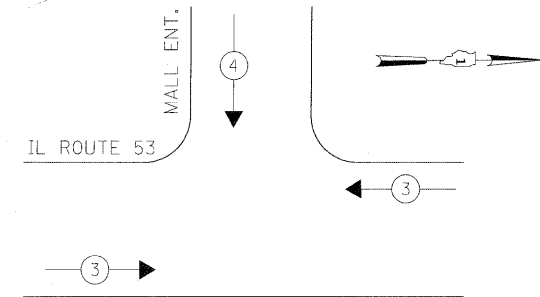


PHASE DESIGNATION DIAGRAM

STAGES: PRE-STAGE, STAGE 1, STAGE 2
STAGE 3, AND AFTER PROPOSED
ROADWAY GEOMETRICS ARE BUILT

OVERLAP LETTER	PERMISSIVE PHASE	PROTECTED PHASE
B	4	5

EMERGENCY VEHICLE PREEMPTION SEQUENCE



PROPOSED EMERGENCY VEHICLE PREEMPTORS		
EMERGENCY VEHICLE PREEMPTOR	3	4
MOVEMENT	←→	↓

STAGES: PRE-STAGE, STAGE 1, STAGE 2,
STAGE 3, AND AFTER PROPOSED
ROADWAY GEOMETRICS ARE BUILT

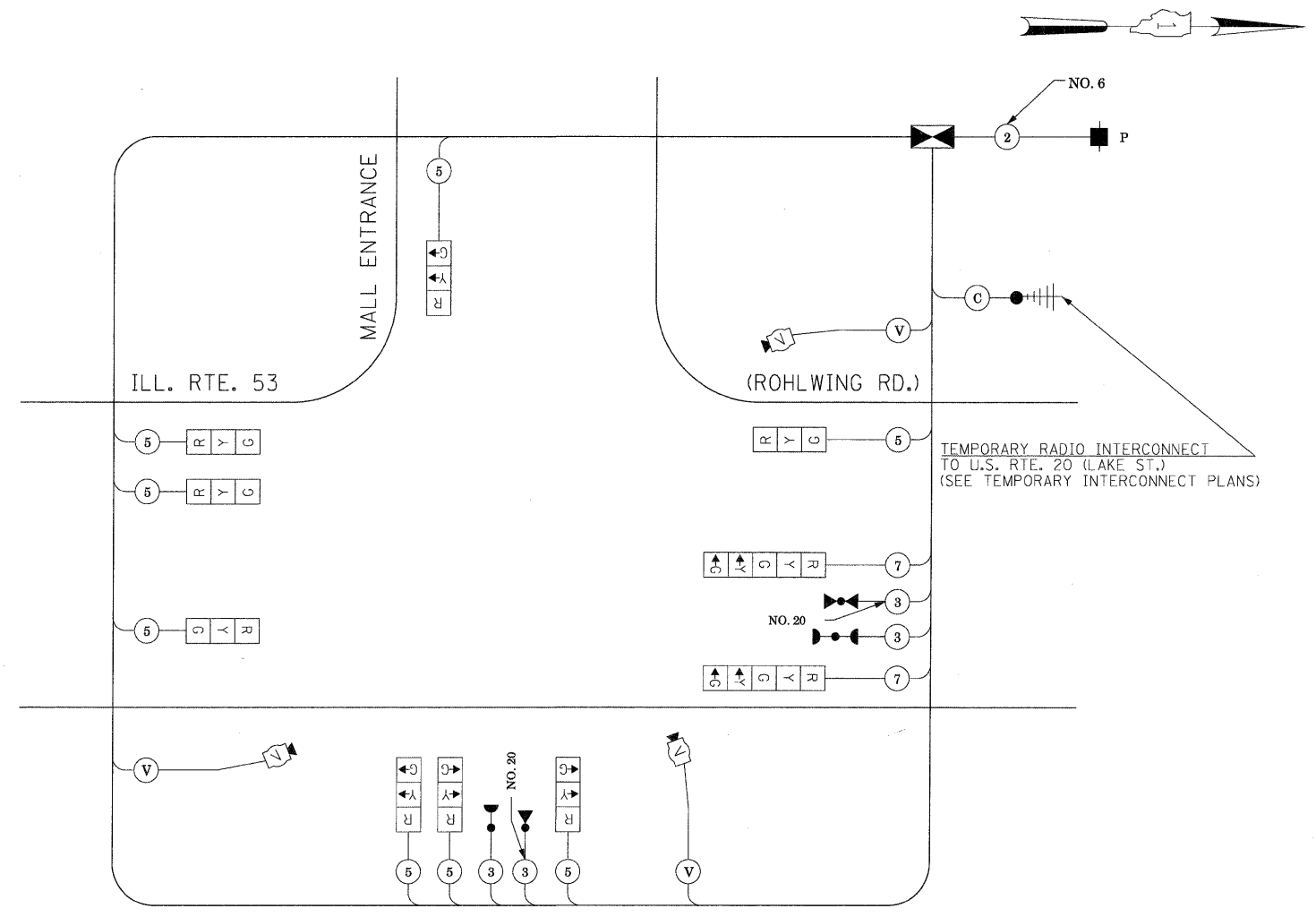
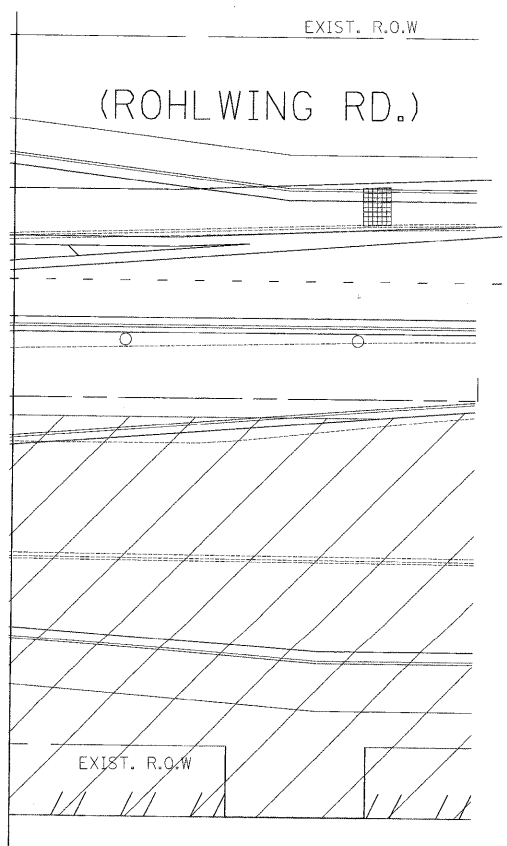
I.D.O.T. TRAFFIC SIGNAL INSTALLATION ELECTRICAL SERVICE REQUIREMENTS					TOTAL WATTAGE
TYPE	NO LAMPS	WATTAGE		%OPERATION	
SIGNAL (RED)	10	135	17	0.50	85
(YELLOW)	10	135	25	0.25	62.5
(GREEN)	10	135	15	0.25	37.5
ARROW	4	135	12	0.10	4.8
PED. SIGNAL		90	25	1.00	
CONTROLLER	1	100	100	1.00	100
ILLUM. SIGN			25	0.05	
VIDEO SYSTEM	1	150		1.00	150
FLASHER				0.50	
ENERGY COSTS TO:				TOTAL =	439.8

ILLINOIS DEPARTMENT OF TRANSPORTATION
201 WEST CENTER COURT
SCHAUMBURG, ILLINOIS 60196-1096

ENERGY SUPPLY CONTACT: CURTIS TOPPS
PHONE: (630) 691-4356
COMPANY: COMMONWEALTH EDISON

FILE NAME =	USER NAME = #USER#	DESIGNED - PKG	REVISED -
#FILES		DRAWN - MAA, EA	REVISED -
	PLOT SCALE = #SCALE#	CHECKED - PKG, EA	REVISED -
	PLOT DATE = #DATE#	DATE - 5/10/2010	REVISED -

MATCH LINE STA. 122+00
(SEE SHEET 1 OF 2)



TEMPORARY CABLE PLAN

(NOT TO SCALE)
PRE-STAGE, STAGE 1, STAGE 2, STAGE 3,
AND AFTER PROPOSED ROADWAY GEOMETRICS ARE BUILT

THE TRAFFIC SIGNAL CONTROL EQUIPMENT FOR THIS PROJECT SHALL BE "ECONOLITE" TO MATCH THE EXISTING ADJACENT SYSTEM.

STATE OF ILLINOIS
DEPARTMENT OF TRANSPORTATION

TEMPORARY CABLE PLAN, TEMPORARY PHASE DESIGNATION DIAGRAM TEMPORARY EMERGENCY VEHICLE PREEMPTION SEQUENCE ILLINOIS ROUTE 53 (ROHLWING RD.) AT MALL ENTRANCE PRE-STAGE, STAGE 1, STAGE 2, AND STAGE 3 (SHEET 2 OF 2).			
SCALE: NONE	SHEET NO. OF SHEETS	STA. TO STA.	

F.A.P. RTE. 2578	SECTION 532B	COUNTY DuPage	TOTAL SHEETS 781	SHEET NO. 452
FED. ROAD DIST. NO. - ILLINOIS FED. AID PROJECT			CONTRACT NO. 60477	