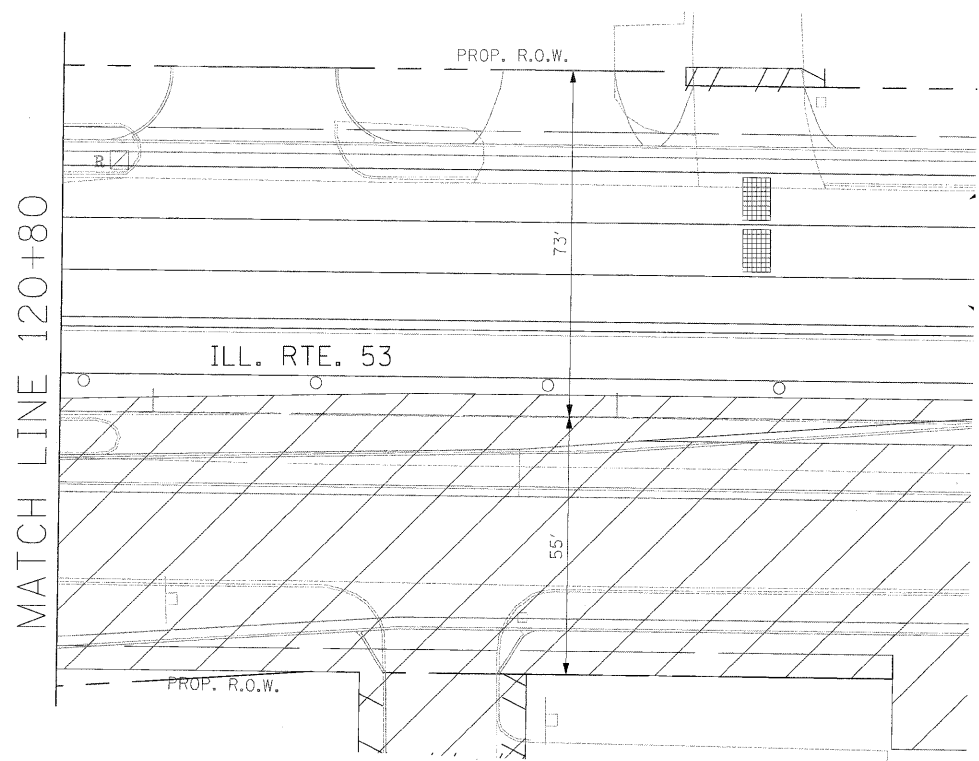
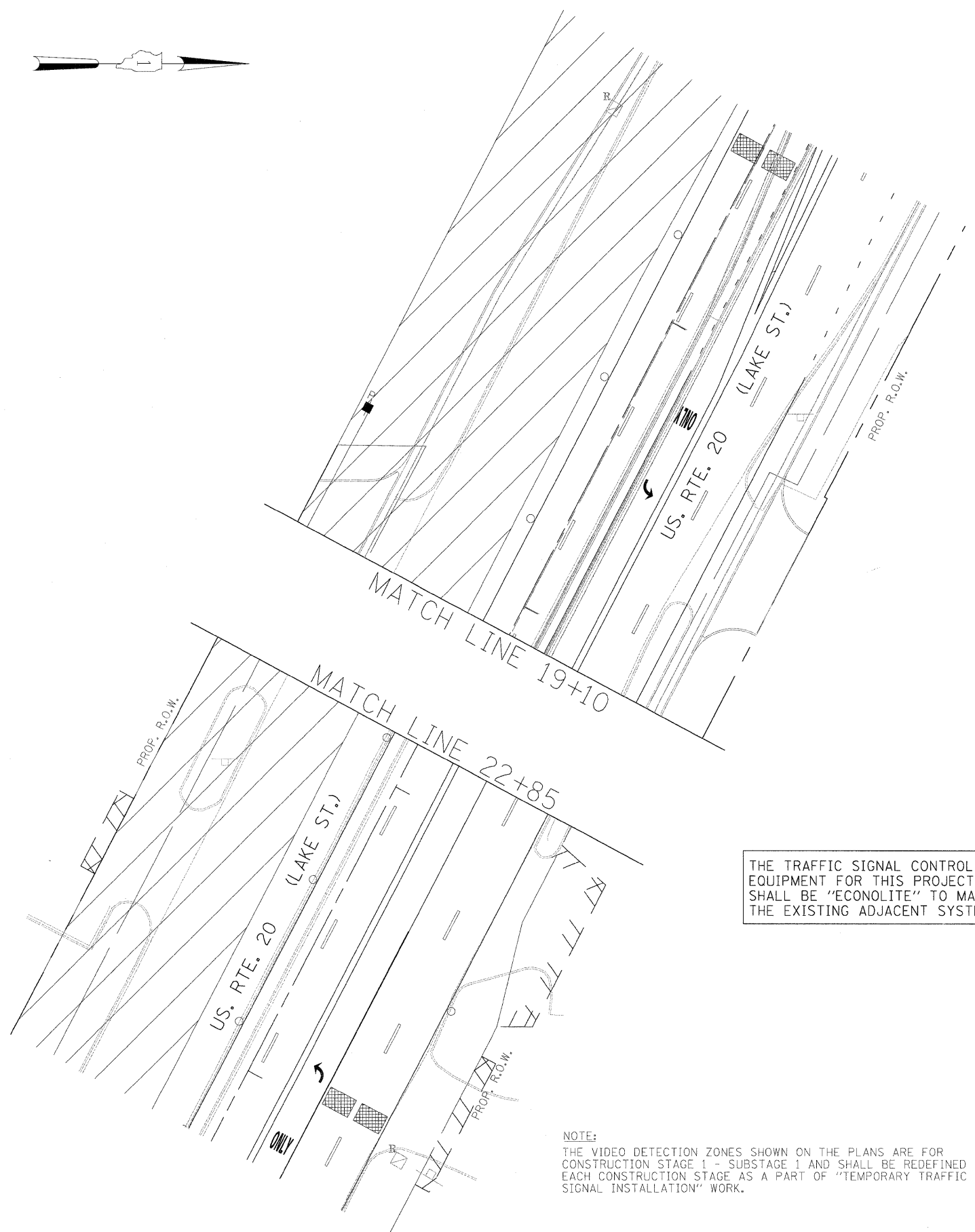


MATCH LINE 116+85



MATCH LINE 120+80



MATCH LINE 19+10

MATCH LINE 22+85

THE TRAFFIC SIGNAL CONTROL EQUIPMENT FOR THIS PROJECT SHALL BE "ECONOLITE" TO MATCH THE EXISTING ADJACENT SYSTEM.

NOTE:  
THE VIDEO DETECTION ZONES SHOWN ON THE PLANS ARE FOR CONSTRUCTION STAGE 1 - SUBSTAGE 1 AND SHALL BE REDEFINED FOR EACH CONSTRUCTION STAGE AS A PART OF "TEMPORARY TRAFFIC SIGNAL INSTALLATION" WORK.

FILE NAME =	USER NAME = #USER#	DESIGNED - PKG	REVISED -
#FILE#		DRAWN - MAA, EA	REVISED -
	PLOT SCALE = #SCALE#	CHECKED - PKG, EA	REVISED -
	PLOT DATE = #DATE#	DATE - 5/10/2010	REVISED -

STATE OF ILLINOIS  
DEPARTMENT OF TRANSPORTATION

TEMPORARY TRAFFIC SIGNAL INSTALLATION AND REMOVAL PLAN  
ILLINOIS ROUTE 53 (ROHLWING RD.) AT U.S. ROUTE 20 (LAKE ST.) PRE STAGE  
AND STAGE 1 (SHEET 2 OF 6)

SCALE: 1"=20'	SHEET NO. OF SHEETS	STA. TO STA.
---------------	---------------------	--------------

F.A.P. RTE. 25/B	SECTION 532B	COUNTY DuPage	TOTAL SHEETS 781	SHEET NO. 456
FED. ROAD DIST. NO. - ILLINOIS			FED. AID PROJECT	

CONTRACT NO. 60477