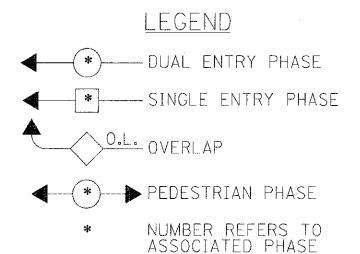
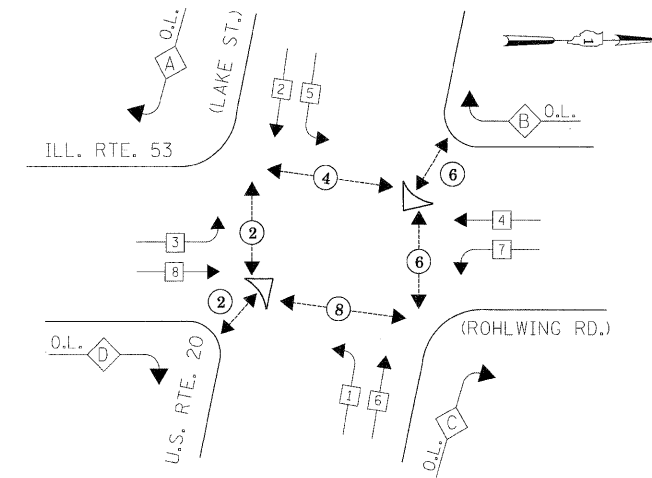


SCHEDULE OF QUANTITIES

QUANTITY	UNIT	ITEM
58	SQ FT	SIGN PANEL - TYPE 1
30	SQ FT	SIGN PANEL - TYPE 2
796	FOOT	CONDUIT IN TRENCH, 2" DIA., GALVANIZED STEEL
32	FOOT	CONDUIT IN TRENCH, 2 1/2" DIA., GALVANIZED STEEL
78	FOOT	CONDUIT IN TRENCH, 3" DIA., GALVANIZED STEEL
263	FOOT	CONDUIT IN TRENCH, 4" DIA., GALVANIZED STEEL
715	FOOT	CONDUIT PUSHED, 2" DIA., GALVANIZED STEEL
65	FOOT	CONDUIT PUSHED, 3" DIA., GALVANIZED STEEL
798	FOOT	CONDUIT PUSHED, 4" DIA., GALVANIZED STEEL
8	EACH	HANDHOLE
4	EACH	HEAVY-DUTY HANDHOLE
4	EACH	DOUBLE HANDHOLE
1073	FOOT	TRENCH AND BACKFILL FOR ELECTRICAL WORK
1	EACH	FULL-ACTUATED CONTROLLER AND TYPE IV CABINET, SPECIAL
1	EACH	TRANSCEIVER-FIBER OPTIC
2816	FOOT	ELECTRIC CABLE IN CONDUIT, SIGNAL NO. 14 2C
4746	FOOT	ELECTRIC CABLE IN CONDUIT, SIGNAL NO. 14 3C
3788	FOOT	ELECTRIC CABLE IN CONDUIT, SIGNAL NO. 14 5C
2431	FOOT	ELECTRIC CABLE IN CONDUIT, SIGNAL NO. 14 7C
8347	FOOT	ELECTRIC CABLE IN CONDUIT, LEAD-IN, NO. 14 1 PAIR
220	FOOT	ELECTRIC CABLE IN CONDUIT, SERVICE, NO. 6 2C
2	EACH	TRAFFIC SIGNAL POST, GALVANIZED STEEL 10 FT.
2	EACH	TRAFFIC SIGNAL POST, GALVANIZED STEEL 16 FT.
1	EACH	STEEL COMBINATION MAST ARM ASSEMBLY AND POLE, 48 FT.
2	EACH	STEEL COMBINATION MAST ARM ASSEMBLY AND POLE, 50 FT.
1	EACH	STEEL COMBINATION MAST ARM ASSEMBLY AND POLE, 54 FT.
16	FOOT	CONCRETE FOUNDATION, TYPE A
4	FOOT	CONCRETE FOUNDATION, TYPE C
60	FOOT	CONCRETE FOUNDATION, TYPE E 36-INCH DIAMETER
8	EACH	SIGNAL HEAD, LED, 1-FACE, 3-SECTION, MAST ARM MOUNTED
4	EACH	SIGNAL HEAD, LED, 1-FACE, 5-SECTION, MAST ARM MOUNTED
4	EACH	SIGNAL HEAD, LED, 2-FACE, 1-3 SECTION, 1-5 SECTION, BRACKET MOUNTED
6	EACH	PEDESTRIAN SIGNAL HEAD, LED, 1-FACE, BRACKET MOUNTED WITH COUNTDOWN TIMER
2	EACH	PEDESTRIAN SIGNAL HEAD, LED, 3-FACE, BRACKET MOUNTED WITH COUNTDOWN TIMER
12	EACH	TRAFFIC SIGNAL BACKPLATE, LOUVERED, ALUMINUM
21	EACH	INDUCTIVE LOOP DETECTOR
4	EACH	LIGHT DETECTOR
1	EACH	LIGHT DETECTOR AMPLIFIER
10	EACH	PEDESTRIAN PUSH-BUTTON
1	EACH	TEMPORARY TRAFFIC SIGNAL INSTALLATION
1	EACH	REMOVE EXISTING TRAFFIC SIGNAL EQUIPMENT
12	EACH	REMOVE EXISTING HANDHOLE
9	EACH	REMOVE EXISTING CONCRETE FOUNDATION
1233	FOOT	PREFORMED DETECTOR LOOP
1	EACH	TEMPORARY TRAFFIC SIGNAL TIMING
1	EACH	SERVICE INSTALLATION - POLE MOUNTED
1	EACH	UNINTERRUPTIBLE POWER SUPPLY
1295	FOOT	ELECTRIC CABLE IN CONDUIT, GROUNDING, NO. 6 1C
1280	FOOT	ELECTRIC CABLE IN CONDUIT NO. 20 3/C, TWISTED, SHIELDED

* 100% COST TO VILLAGE OF ADDISON

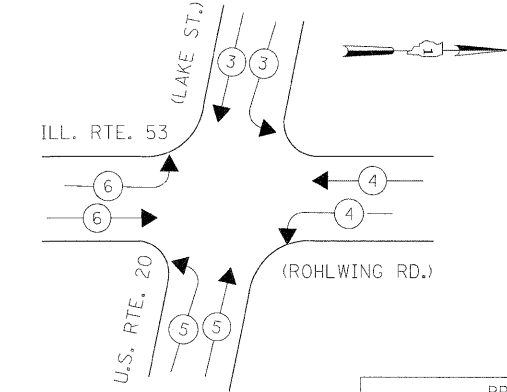
CONTROLLER SEQUENCE



PHASE DESIGNATION DIAGRAM

OVERLAP LETTER	PERMISSIVE PHASE	PROTECTED PHASE
A	= 2 + 3	
B	= 4 + 5	
C	= 6 + 7	
D	= 8 + 1	

EMERGENCY VEHICLE PREEMPTION SEQUENCE



PROPOSED EMERGENCY VEHICLE PREEMPTORS				
EMERGENCY VEHICLE PREEMPTOR	3	4	5	6
MOVEMENT	↓↑	↔	↑↓	→←

THE TRAFFIC SIGNAL CONTROL EQUIPMENT FOR THIS PROJECT SHALL BE "ECONOLITE" TO MATCH THE EXISTING ADJACENT SYSTEM.