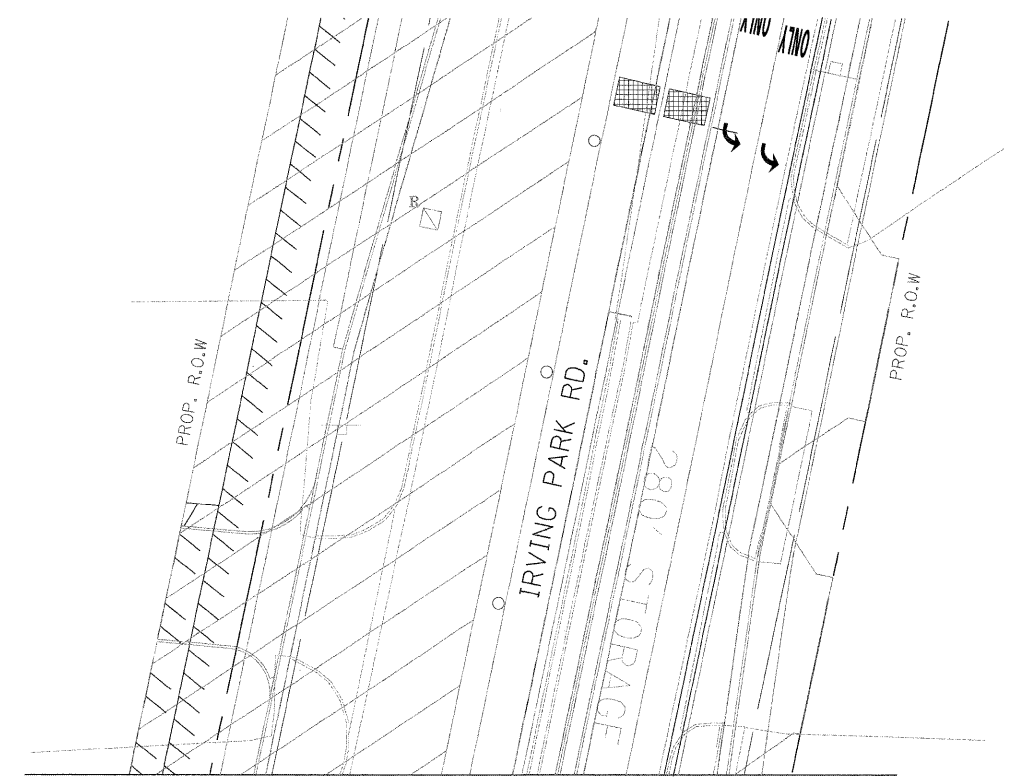
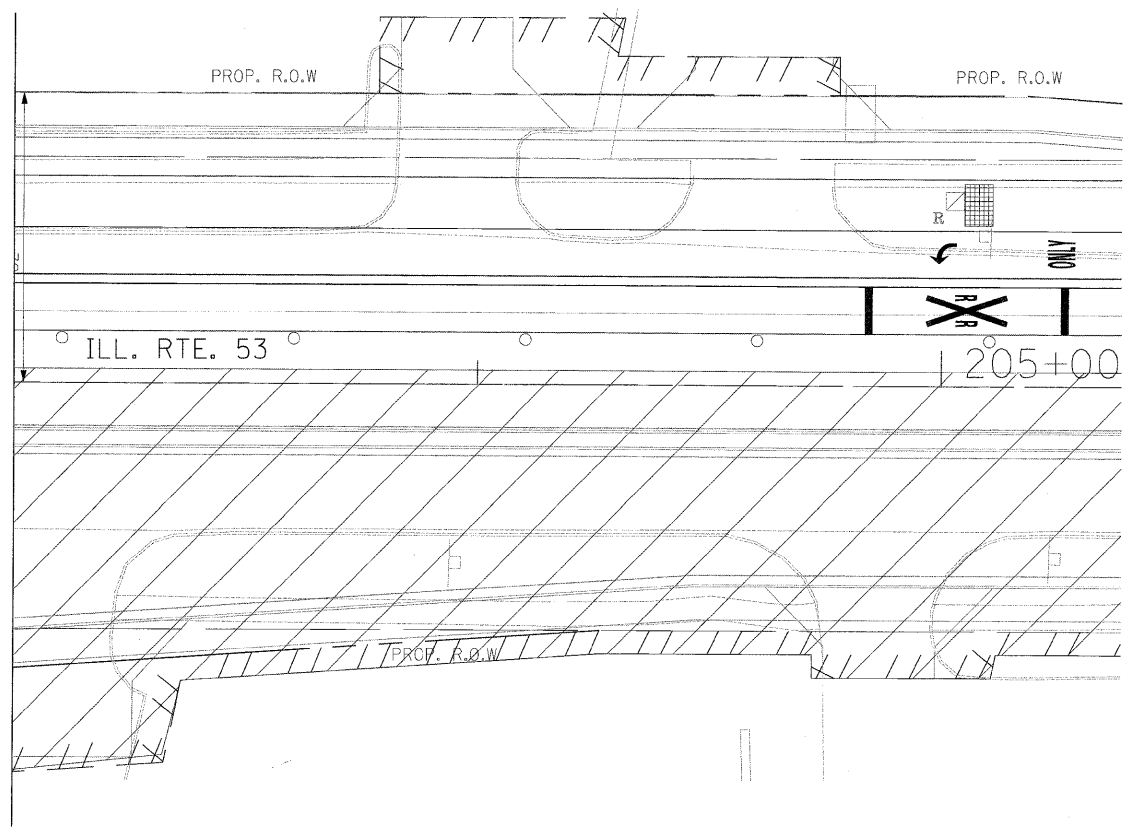


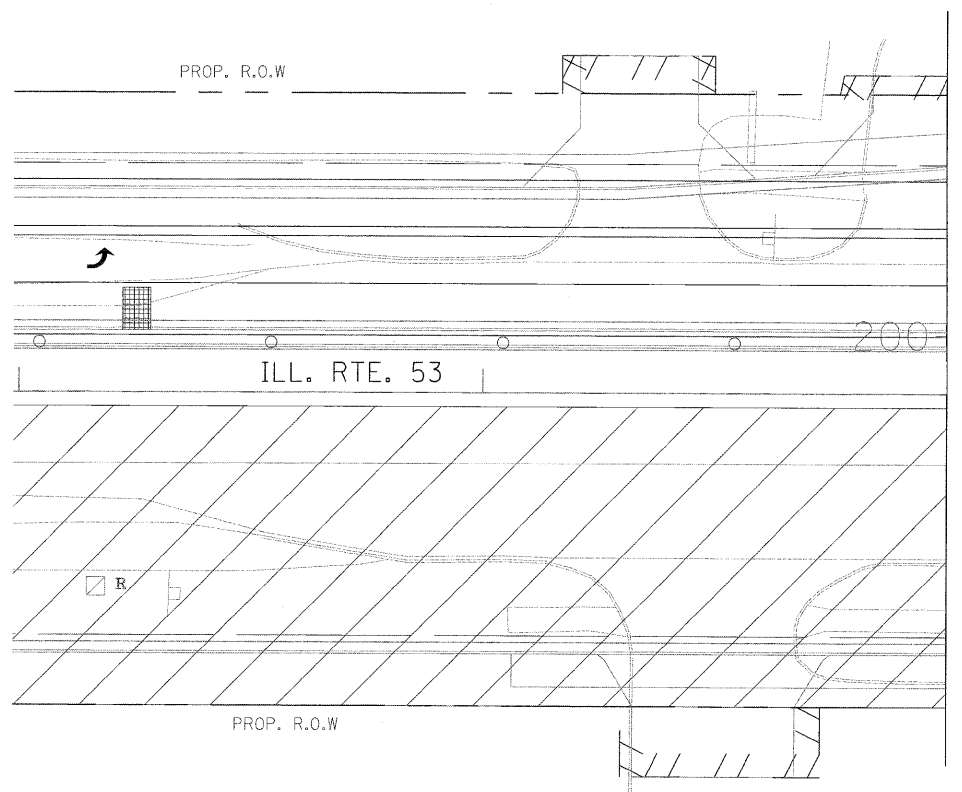


MATCH LINE 203+00



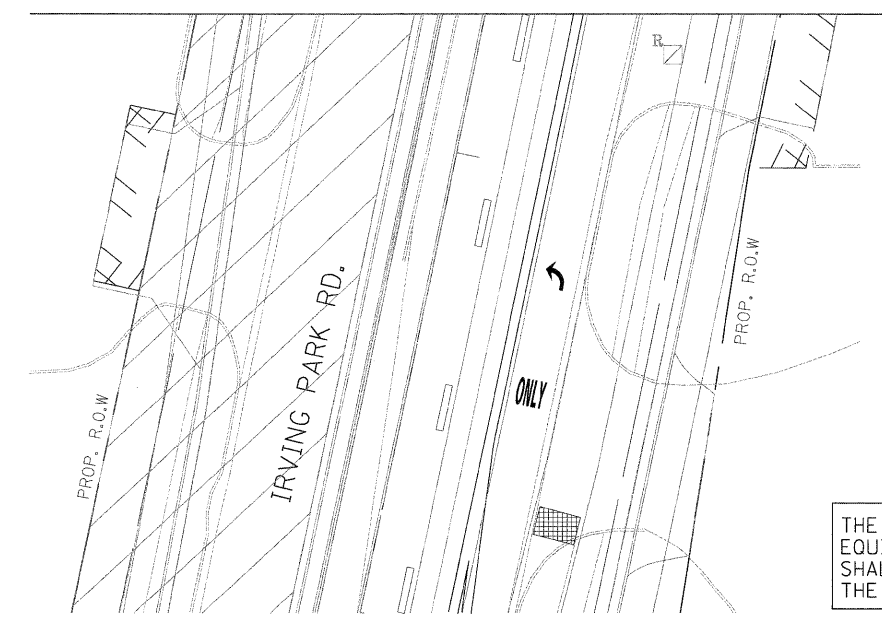
MATCH LINE "B"

NOTE: THE VIDEO DETECTION ZONES SHOWN ON THE PLANS ARE FOR PRE-CONSTRUCTION STAGE (EXISTING GEOMETRICS) AND SHALL BE REDEFINED FOR EACH CONSTRUCTION STAGE AS A PART OF "TEMPORARY TRAFFIC SIGNAL INSTALLATION" WORK.



MATCH LINE 200+00

MATCH LINE "A"



THE TRAFFIC SIGNAL CONTROL EQUIPMENT FOR THIS PROJECT SHALL BE "ECONOLITE" TO MATCH THE EXISTING ADJACENT SYSTEM.

FILE NAME = \$FILEL\$	USER NAME = \$USER\$	DESIGNED - PKG	REVISED -
		DRAWN - MAA, EA	REVISED -
		CHECKED - PKG, EA	REVISED -
		DATE - 5/10/2010	REVISED -
PLOT SCALE = \$SCALE\$			
PLOT DATE = \$DATE\$			

**STATE OF ILLINOIS  
DEPARTMENT OF TRANSPORTATION**

**TEMPORARY TRAFFIC SIGNAL INSTALLATION AND REMOVAL PLAN  
ILLINOIS ROUTE 53 (ROHLWING RD.) AT ILL. RTE. 19 (IRVING PARK RD.)  
PRE STAGE AND STAGE 1 (SHEET 2 OF 5)**

F.A.P. RTE. 2578	SECTION 532B	COUNTY DuPage	TOTAL SHEETS 781	SHEET NO. 478
FED. ROAD DIST. NO. - ILLINOIS			FED. AID PROJECT	
CONTRACT NO. 60477				

SCALE: SHEET NO. OF SHEETS STA. TO STA.