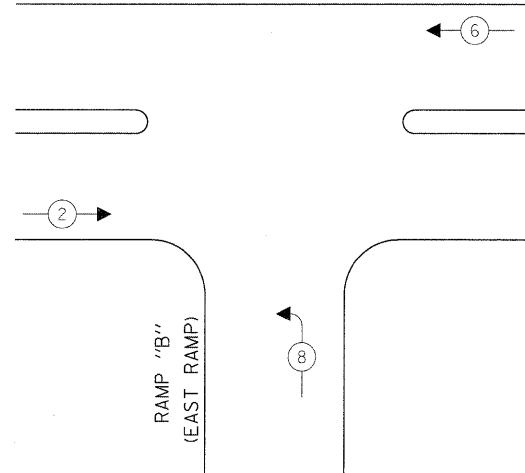


CONTROLLER SEQUENCE

ARMY TRAIL RD.



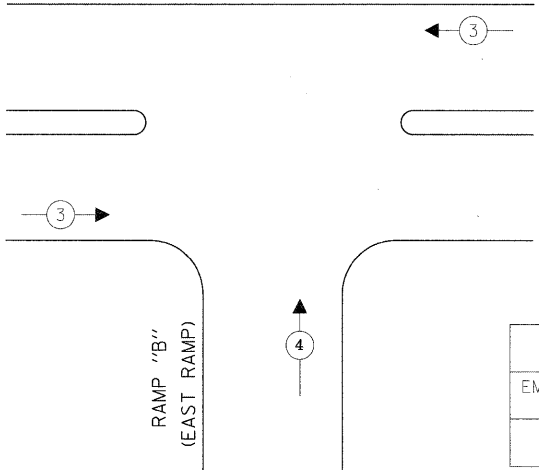
TEMPORARY PHASE DESIGNATION DIAGRAM
CONSTRUCTION SEQUENCE FOR
PRE-CONSTRUCTION STAGE ONLY

LEGEND

- ◀ * → DUAL ENTRY PHASE
- ◀ * SINGLE ENTRY PHASE
- ◀ O.L. → OVERLAP
- ◀ * → PEDESTRIAN PHASE
- * NUMBER REFERS TO ASSOCIATED PHASE

EMERGENCY VEHICLE PREEMPTION SEQUENCE

ARMY TRAIL RD.



PROPOSED EMERGENCY VEHICLE PREEMPTORS			
EMERGENCY VEHICLE PREEMPTOR	3	4	
MOVEMENT	↔	↑	

EMERGENCY VEHICLE PREEMPTION SEQUENCE
FOR PRE-CONSTRUCTION STAGE ONLY

I.D.O.T. TRAFFIC SIGNAL INSTALLATION ELECTRICAL SERVICE REQUIREMENTS					TOTAL WATTAGE
TYPE	NO LAMPS	WATTAGE		%OPERATION	
SIGNAL (RED) (YELLOW) (GREEN)	11	135	17	0.50	93.5
	11	135	25	0.25	68.75
	11	135	15	0.25	41.25
ARROW		135	12	0.10	
PED. SIGNAL		90	25	1.00	
CONTROLLER	1	100	100	1.00	100
ILLUM. SIGN				0.05	
VIDEO SYSTEM		150		1.00	150
FLASHER				0.50	
ENERGY COSTS TO:				TOTAL =	453.5
ILLINOIS DEPARTMENT OF TRANSPORTATION 201 WEST CENTER COURT SCHAUMBURG, ILLINOIS 60196-1096					
ENERGY SUPPLY CONTACT: ELLIE SARALLO PHONE: (630) 424 5124 COMPANY: COMMONWEALTH EDISON					

TO CONTROLLER AT ARMY TRAIL RD.
AND RAMP "A" (WEST RAMP)
(SEE NOTE 1)

TO EVP MOUNTED ON SIGNAL
POST AT RAMP "A" (WEST RAMP)
(SEE NOTE 2)

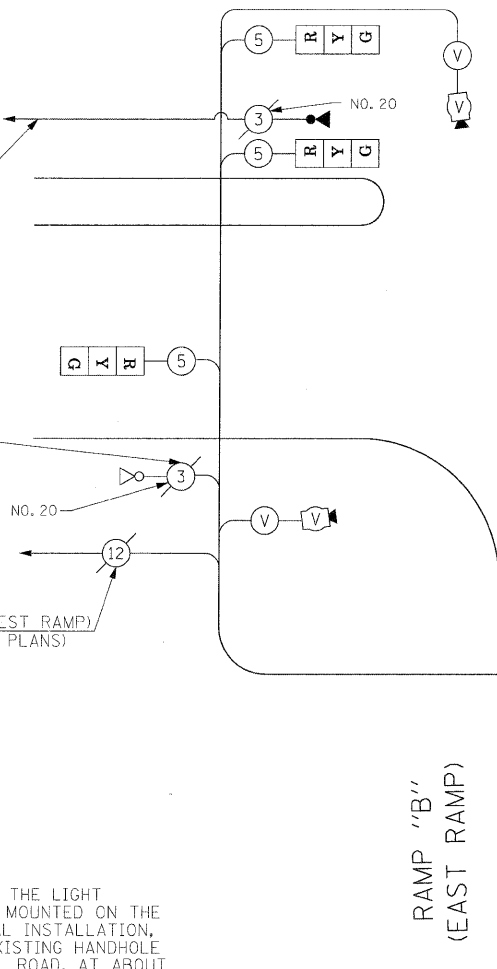
INTERCONNECT TO RAMP "A" (WEST RAMP)
(SEE TEMPORARY INTERCONNECT PLANS)

NOTE 1: THE EXISTING 3C NO. 20 CABLE FOR THE LIGHT DETECTOR FOR WEST RAMP SIGNALS, MOUNTED ON THE MAST ARM AT THE EAST RAMP SIGNAL INSTALLATION, SHALL BE PULLED BACK INTO THE EXISTING HANDHOLE ON THE SOUTH SIDE OF ARMY TRAIL ROAD, AT ABOUT STA. 6+90. THE CABLE SHALL BE RE-ROUTED THROUGH THE EXISTING CONDUITS AND THE PROPOSED 2" CNC TO THE TEMPORARY TRAFFIC SIGNAL INSTALLATION AS SHOWN IN THE PLAN. ADDITIONAL CABLE SHALL BE SPLICED TO THE EXISTING CABLE AS NEEDED. THIS WORK SHALL BE INCIDENTAL TO THE TEMPORARY TRAFFIC SIGNAL INSTALLATION AT THE EAST RAMP AND ARMY TRAIL ROAD.

NOTE 2: INSTALL 2C NO. 20 CABLE BETWEEN EXISTING CONTROLLER AND TEMPORARY CONTROLLER FOR THE EXISTING LIGHT DETECTOR MOUNTED AT RAMP "A" (WEST RAMP) SIGNAL INSTALLATION FOR THE SIGNAL INSTALLATION AT RAMP "B" (EAST RAMP). THIS WORK WILL BE INCIDENTAL TO THE PAY ITEM "TEMPORARY TRAFFIC SIGNAL INSTALLATION".

NOTE 3: THE TELEPHONE SERVICE MUST BE MAINTAINED AT THIS TEMPORARY TRAFFIC SIGNAL INSTALLATION. THIS ITEM OF WORK SHALL NOT BE PAID FOR SEPARATELY BUT SHALL BE INCIDENTAL TO THE PAY ITEM "TEMPORARY TRAFFIC SIGNAL INSTALLATION".

ARMY TRAIL RD.



CABLE PLAN

(NOT TO SCALE)

THE TRAFFIC SIGNAL CONTROL EQUIPMENT FOR THIS PROJECT SHALL BE "ECONOLITE" TO MATCH THE EXISTING ADJACENT SYSTEM.