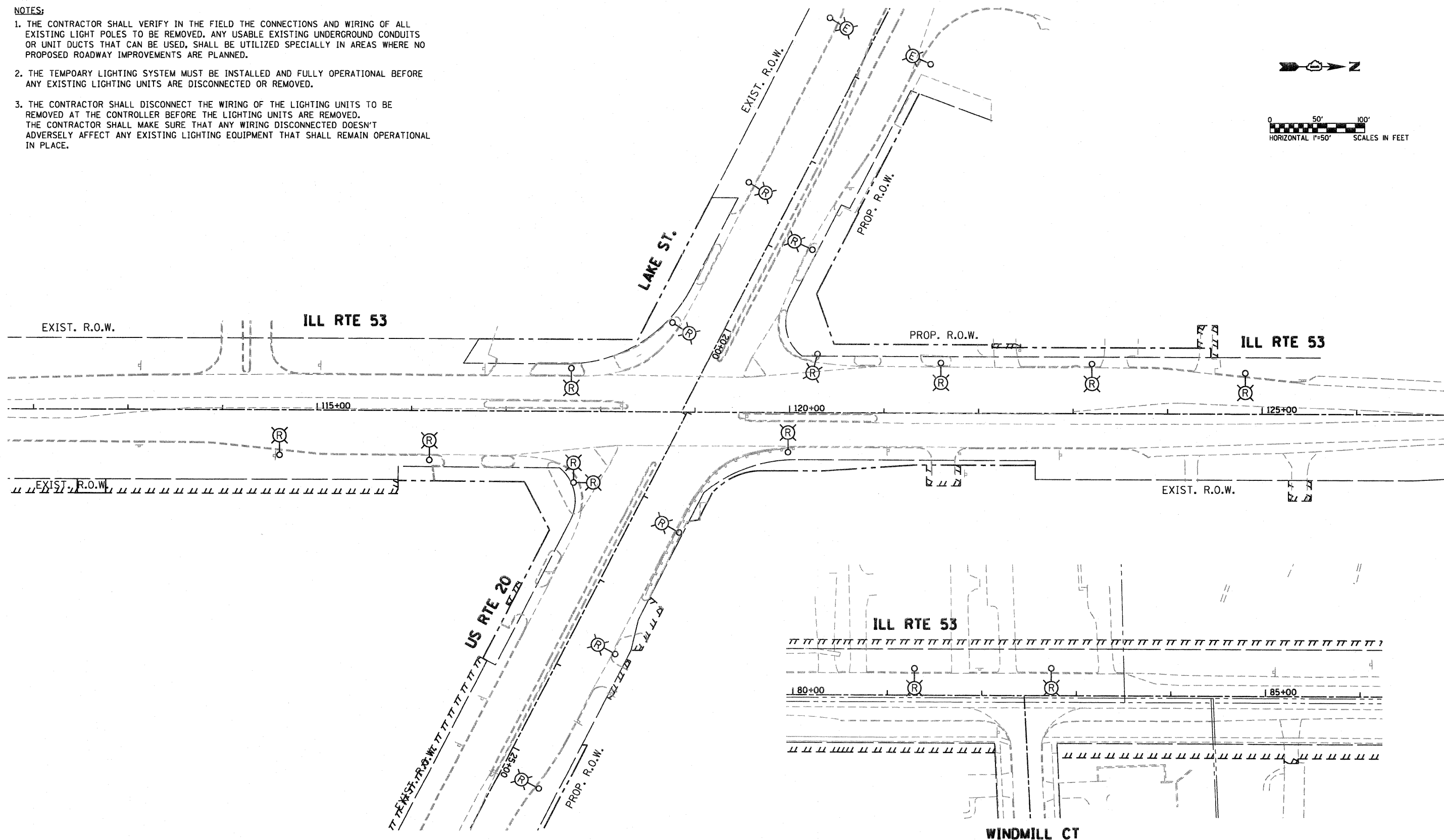
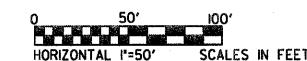


NOTES:

1. THE CONTRACTOR SHALL VERIFY IN THE FIELD THE CONNECTIONS AND WIRING OF ALL EXISTING LIGHT POLES TO BE REMOVED. ANY USABLE EXISTING UNDERGROUND CONDUITS OR UNIT DUCTS THAT CAN BE USED, SHALL BE UTILIZED SPECIALLY IN AREAS WHERE NO PROPOSED ROADWAY IMPROVEMENTS ARE PLANNED.
2. THE TEMPORARY LIGHTING SYSTEM MUST BE INSTALLED AND FULLY OPERATIONAL BEFORE ANY EXISTING LIGHTING UNITS ARE DISCONNECTED OR REMOVED.
3. THE CONTRACTOR SHALL DISCONNECT THE WIRING OF THE LIGHTING UNITS TO BE REMOVED AT THE CONTROLLER BEFORE THE LIGHTING UNITS ARE REMOVED. THE CONTRACTOR SHALL MAKE SURE THAT ANY WIRING DISCONNECTED DOESN'T ADVERSELY AFFECT ANY EXISTING LIGHTING EQUIPMENT THAT SHALL REMAIN OPERATIONAL IN PLACE.



ga GANDHI AND ASSOCIATES, INC.
ENGINEERS AND PLANNERS
6035 N. NORTHWEST HIGHWAY
SUITE 306
CHICAGO, ILLINOIS 60631 TEL: (773) 774-5910

FILE NAME =	USER NAME = .GAL	DESIGNED - PKG	REVISED -
#FILES		DRAWN - MAA, SHM	REVISED -
	PLOT SCALE = 1"=50'	CHECKED - PKG	REVISED -
	PLOT DATE = 2/25/2011	DATE -	REVISED -

**STATE OF ILLINOIS
DEPARTMENT OF TRANSPORTATION**

**EXISTING LIGHTING REMOVAL PLAN
(SHEET 2 OF 2)**

SCALE: 1"= 50' SHEET NO. OF SHEETS STA. TO STA.

F.A.P. RTE.	SECTION	COUNTY	TOTAL SHEETS	SHEET NO.
2578	532B	DuPage	781	569
CONTRACT NO. 60477				
FED. ROAD DIST. NO. 1 ILLINOIS FED. AID PROJECT				