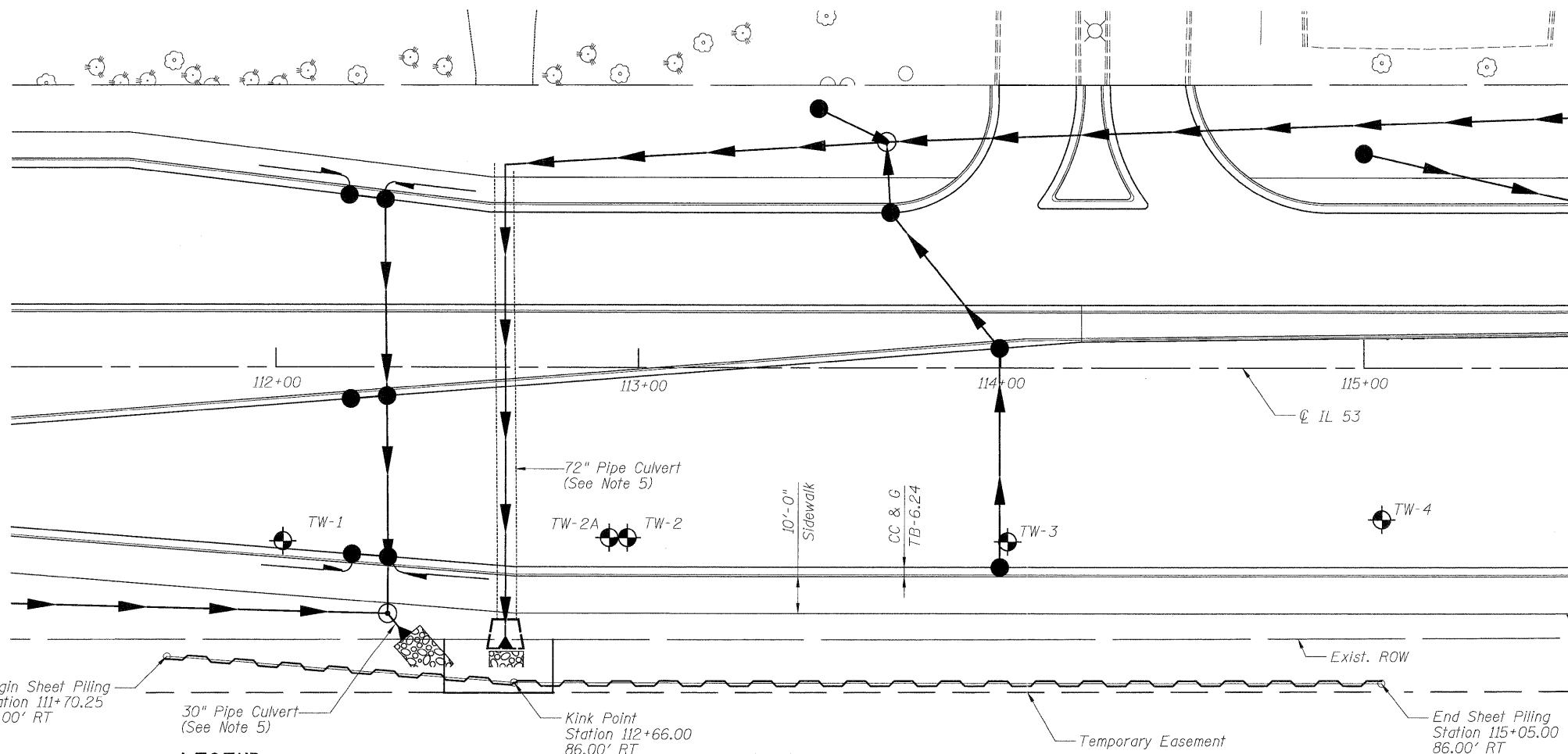


ELEVATION

NOTES:

1. For Soil Boring Logs, see Sheet S24 and S25 of S25.
2. Work this sheet with Cross Section sheets within this plan set.
3. Offsets are given to the centerline of sheeting.
4. Removal of unsuitable sediment and replacement with Porous Granular Embankment (Subgrade) shall be performed in the dry, not under water. Cost of pumping the excavation dry and maintaining dry conditions will be included with the item "Temporary Sheet Piling".
5. See Drainage Plans within this plan set for other drainage requirements.



PLAN

BILL OF MATERIAL

| ITEM | UNIT | TOTAL |
|--------------------------|-------|-------|
| * Temporary Sheet Piling | Sq Ft | 5,729 |

* See Special Provisions

| | |
|----------|----------|
| DESIGNED | - A.Y. |
| CHECKED | - R.D.W. |
| DRAWN | - A.Y. |
| CHECKED | - R.D.W. |

LEGEND:

- Boring Location
- Sheet Piling
- Storm Sewer



PATRICK ENGINEERING
 PATRICK ENGINEERING INC.
 4970 VARSITY DRIVE
 LISLE, IL 60532
 patrickengineering.com

| | | | | | |
|-------------------------|-----------------------|---------------------------|------------------|------------------------|---------------------|
| SHEET NO. S23 OF S25 | F.A.P RTE. 2578 | SECTION 532B | COUNTY DUPAGE | TOTAL SHEETS 781 | SHEET NO. 602 |
| | CONTRACT NO. 60477 | | | | |
| 12/3/2010 | | ILLINOIS FED. AID PROJECT | | | |

TEMPORARY SHEET PILING