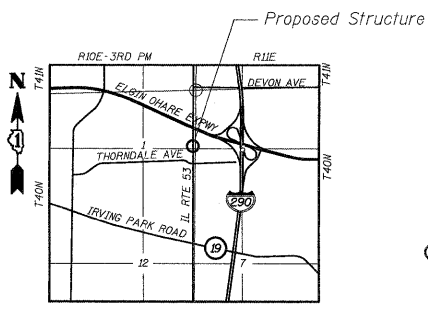
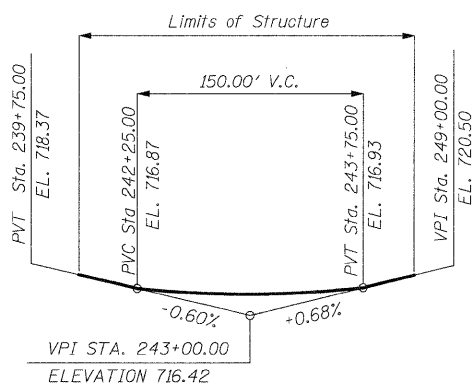
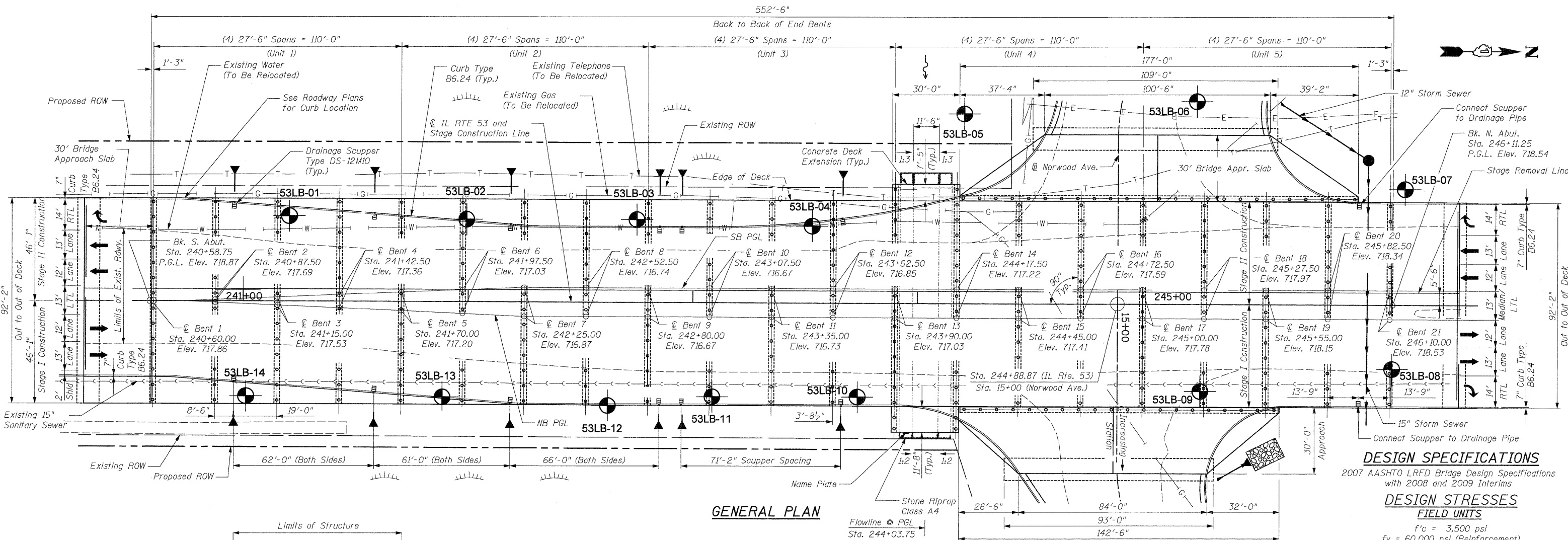
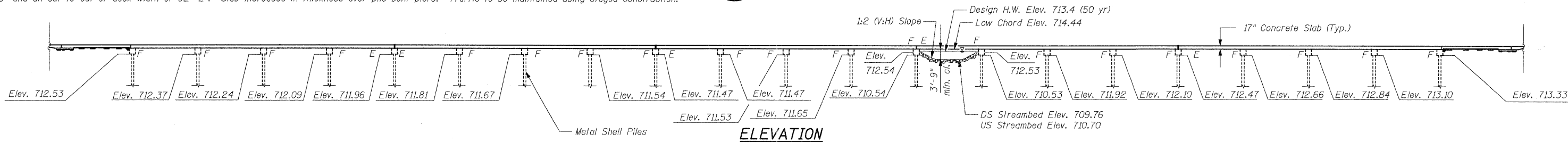


Benchmark: BM #22 Elev. 716.50 rebar with cap at Sta. 245+33.52, 37.88' Rt.



Existing Structure: None. Proposed Structure number is 022-0012. Each unit is four spans of 27'-6" for a back-to-back of abutments length of 552'-6" and an out-to-out of deck width of 92'-2". Slab increases in thickness over pile bent piers. Traffic to be maintained using staged construction.



GENERAL PLAN

SEISMIC DATA

Seismic Performance Zone (SPZ) = 1
 Design Spectral Acceleration at 1.0 sec. (S_{D1}) = 0.085g
 Design Spectral Acceleration at 0.2 sec. (S_{D5}) = 0.150g
 Soil Site Class = D

LOADING HL-93

Allow 50#/sq. ft. for future wearing surface.

DESIGN SPECIFICATIONS
 2007 AASHTO LRFD Bridge Design Specifications with 2008 and 2009 Interims
DESIGN STRESSES
FIELD UNITS
 $f'_c = 3,500$ psi
 $f_y = 60,000$ psi (Reinforcement)

GENERAL PLAN & ELEVATION
DRY LAND BRIDGE
ILLINOIS ROUTE 53
F.A.U. RTE 2578 - SEC. 532B
DUPAGE COUNTY
STATION 244+88.87
STRUCTURE NO. 022-0012

DESIGNED = J. Vermillion
CHECKED = J. Refvik
DRAWN = J. Vermillion
CHECKED = J. Refvik

PATRICK ENGINEERING, INC.



Roger Di Giulio
 ROGER DI GIULIO, S.E.
 NO. 5197
 EXP. DATE: 11/30/10
 APPLY TO DRAWINGS: SA1-SA37

APPROVED
 FOR STRUCTURAL ADEQUACY ONLY
Carl Meyer
 ENGINEER OF BRIDGES AND STRUCTURES

PATRICK ENGINEERING
 PATRICK ENGINEERING INC.
 4970 VARSITY DRIVE
 LISLE, IL 60532
 patrickengineering.com

SHEET NO. SA1 OF SA37	F.A.P RTE. 2578	SECTION 532B	COUNTY DUPAGE	TOTAL SHEETS 781	SHEET NO. 605
	CONTRACT NO. 60477				
12/3/2010		ILLINOIS FED. AID PROJECT			