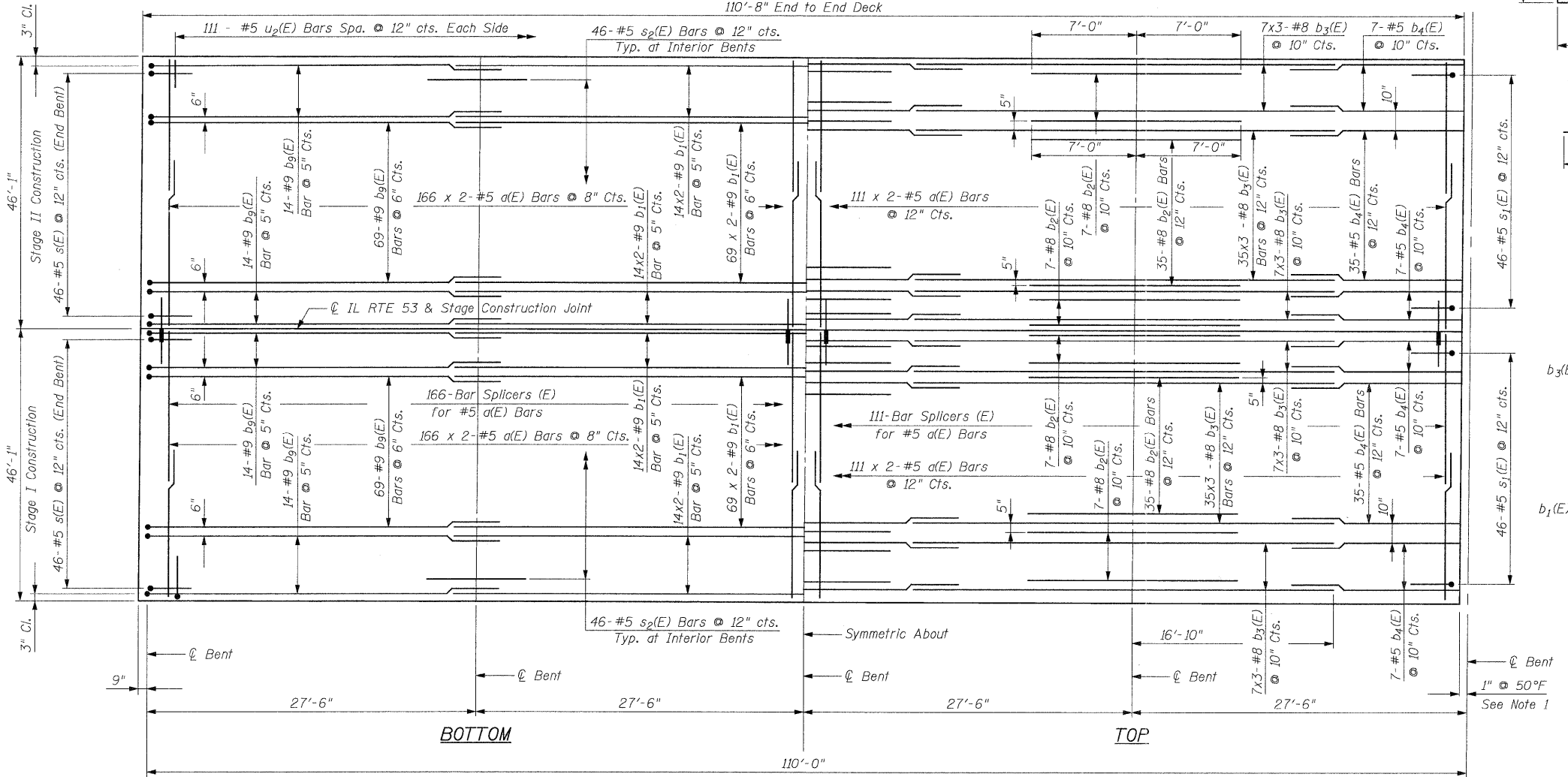
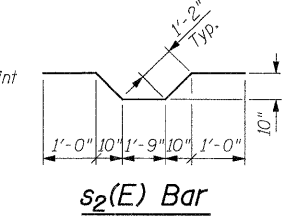


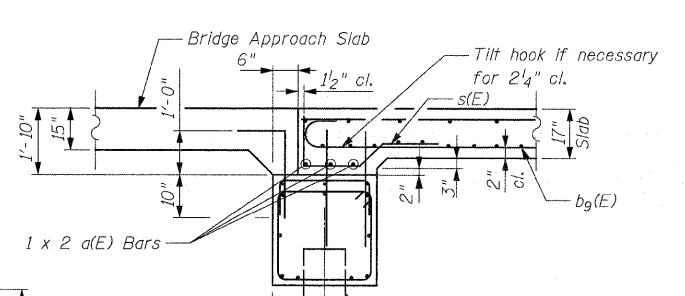
END UNIT ELEVATION
Unit 1 Shown, Unit 5 Similar by Opposite Hand
110'-8" End to End Deck



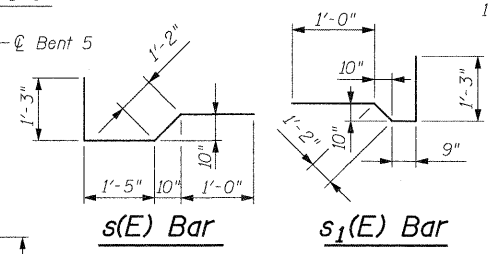
END UNIT PLAN
Unit 1 Shown, Unit 5 Similar by Opposite Hand
92'-2" Out to Out Bridge Deck



s₂(E) Bar

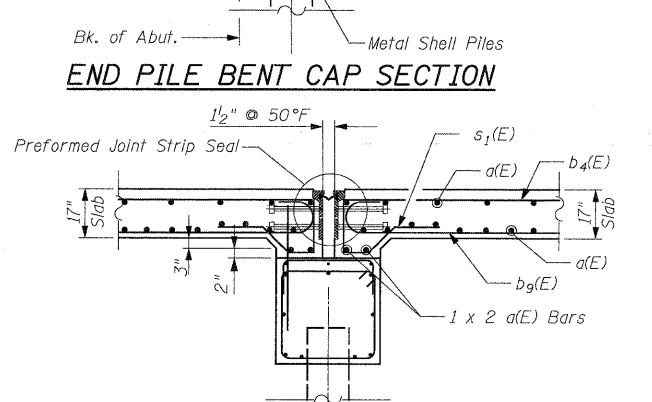


END PILE BENT CAP SECTION

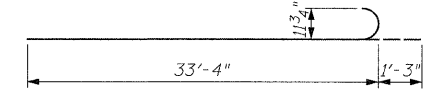


s(E) Bar

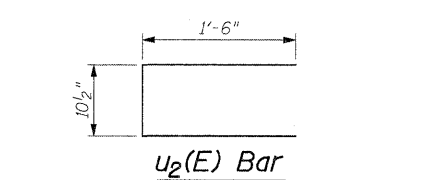
s₁(E) Bar



EXPANSION PILE BENT



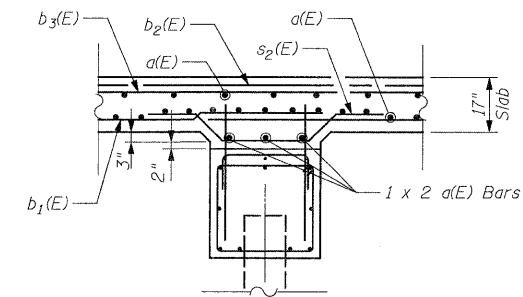
b₉(E) Bar



u₂(E) Bar

BILL OF MATERIAL FOR ONE UNIT
(Two Units Required, Unit 1 and 5)

Bar	No.	Size	Length	Shape
a(E)	1164	#5	24'-5"	—
b ₁ (E)	388	#9	32'-9"	—
b ₂ (E)	294	#8	14'-0"	—
b ₃ (E)	294	#8	33'-8"	—
b ₄ (E)	196	#5	14'-3"	—
b ₉ (E)	388	#9	34'-7"	—
s(E)	92	#5	4'-10"	┘
s ₁ (E)	92	#5	4'-2"	┘
s ₂ (E)	276	#5	6'-1"	┘
u ₂ (E)	222	#5	3'-11"	┘

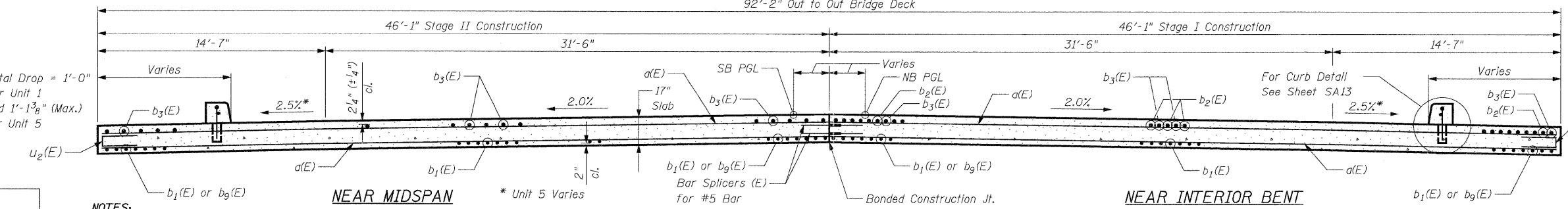


INTERIOR PILE BENT CAP SECTION

TYP. LAP SPLICE

BAR SIZE	MIN. LAP
#5	2'-11"
#8	6'-2"
#9	5'-3"

Concrete Superstructure	Cu. Yd.	551.8
Reinforcement Bars, Epoxy Coated	Pound	162,330
Bar Splicers	Each	277
Protective Coat	Sq. Yd.	1,135
Bridge Deck Grooving	Sq. Yd.	1,135



DECK PLAN & CROSS-SECTION (END UNITS)

STRUCTURE NO. 022-0012

DESIGNED - J. Refvik
CHECKED - R. DiGiulio
DRAWN - J. Vermillion
CHECKED - R. DiGiulio

- NOTES:**
- Dimensions are based on a Rolled Rail Joint. If the Contractor elects to use the Welded Rail Joint, the dimensions may require adjustments to satisfy the details on Sheet SA19.
 - Bars indicated thus 20 x 3 - #5 etc. indicates 20 lines of bars with 3 lengths per bar.
 - See Sheet SA27 for Bar Splicers Details.
 - See Sheet SA1 for location of Drainage Scuppers and Curb Location.
 - See Sheet SA13 for additional Superstructure Details.

CROSS SECTION
(Looking North)

PATRICK ENGINEERING INC.
4970 VARSITY DRIVE
LISLE, IL 60532
patrickengineering.com

SHEET NO. SA11 OF SA37	F.A.P. RTE. 2578	SECTION 532B	COUNTY DUPAGE	TOTAL SHEETS 781	SHEET NO. 615
	CONTRACT NO. 60477			ILLINOIS FED. AID PROJECT	
12/3/2010					