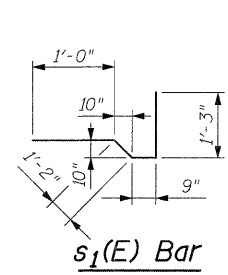
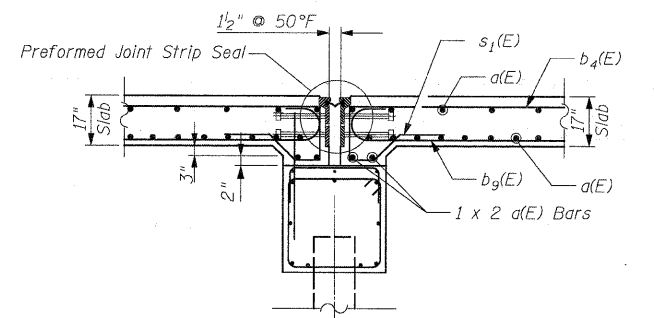


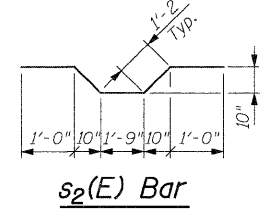
**INTERIOR UNIT ELEVATION**  
Unit 2 Shown, Unit 3 and Unit 4 Similar



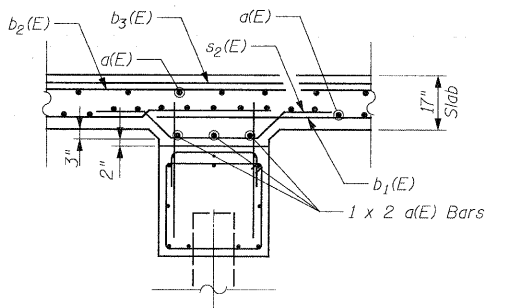
**s<sub>1</sub>(E) Bar**



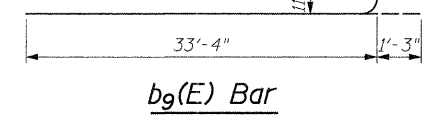
**EXPANSION PILE BENT**



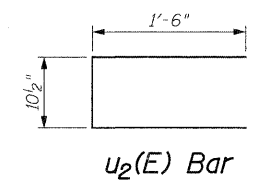
**s<sub>2</sub>(E) Bar**



**INTERIOR PILE BENT  
CAP SECTION**



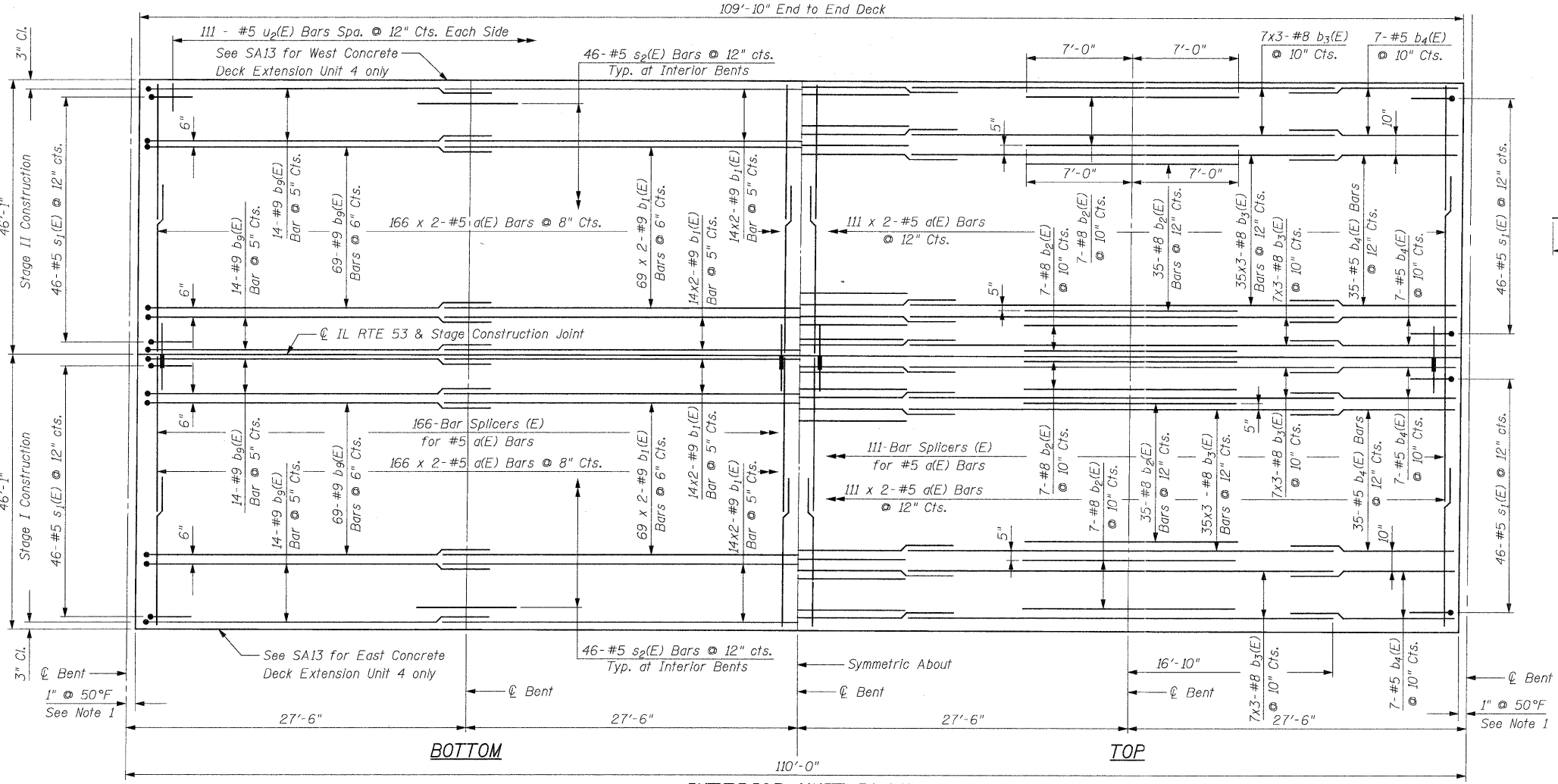
**b<sub>9</sub>(E) Bar**



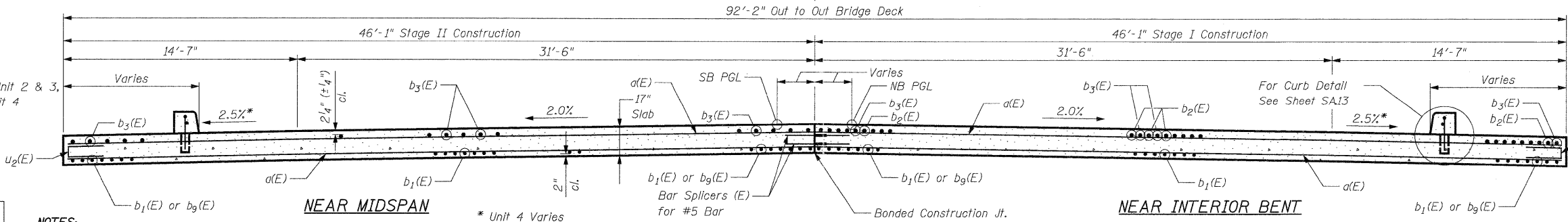
**u<sub>2</sub>(E) Bar**

**TYP. LAP SPLICE**

BAR SIZE	MIN. LAP
#5	2'-11"
#8	6'-2"
#9	5'-3"



**INTERIOR UNIT PLAN**  
Unit 2 Shown, Units 3 & 4 Similar



**DECK PLAN & CROSS-SECTION  
(INTERIOR UNITS)**  
STRUCTURE NO. 022-0012

DESIGNED - J. Refvik  
CHECKED - R. DiGiulio  
DRAWN - J. Vermillion  
CHECKED - R. DiGiulio

- NOTES:**
- Dimensions are based on a Rolled Rail Joint. If the Contractor elects to use the Welded Rail Joint, the dimensions may require adjustments to satisfy the details on Sheet SA19.
  - Bars indicated thus 20 x 3 - #5 etc. indicates 20 lines of bars with 3 lengths per bar.
  - See Sheet SA27 for Bar Splicers Details.
  - See Sheet SA1 for location of Drainage Scuppers and Curb Location.
  - See Sheet SA13 for additional Superstructure Details and Bill of Materials.

**CROSS SECTION**  
(Looking North)

**PATRICK ENGINEERING INC.**  
4970 VARSITY DRIVE  
LISLE, IL 60532  
patrickengineering.com

SHEET NO. SA12 OF SA37	F.A.P RTE. 2578	SECTION 532B	COUNTY DUPAGE	TOTAL SHEETS 781	SHEET NO. 616
	CONTRACT NO. 60477				
12/3/2010		ILLINOIS FED. AID PROJECT			