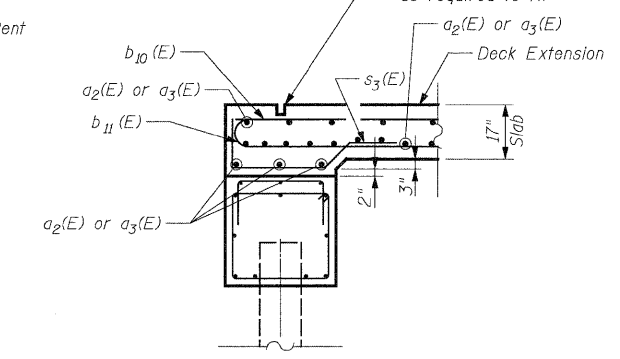
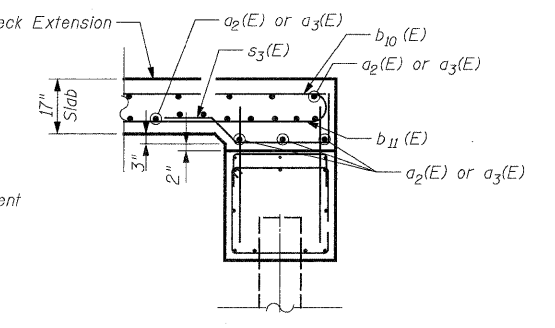


**SCUPPER REINFORCEMENT**

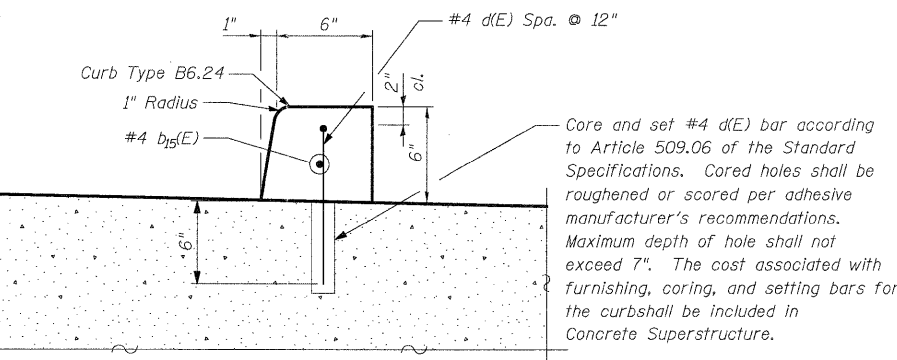
Note:  
Cut longitudinal reinforcement to clear drainage scuppers.



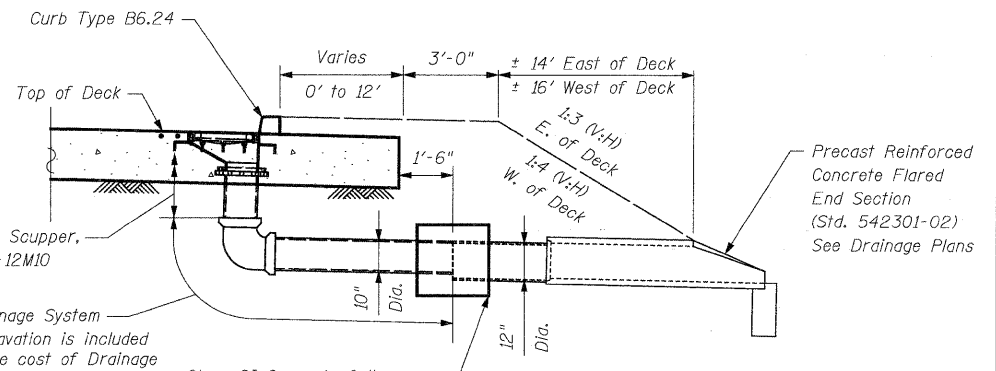
**SECTION THRU BENT 13**



**SECTION THRU BENT 14**



**CURB REINFORCEMENT DETAIL**



**SCUPPER REINFORCEMENT**

**BILL OF MATERIAL**

(For One Scupper, 14 Required)

Bar	No.	Size	Length	Shape
$a_4(E)$	8	#5	4'-0"	—
Reinforcement Bars, Epoxy Coated			Pound	35

**BILL OF MATERIAL FOR ONE UNIT**

(Unit 4)

Bar	No.	Size	Length	Shape
$a_1(E)$	1160	#5	24'-5"	—
$a_2(E)$	83	#5	11'-4"	—
$a_3(E)$	83	#5	7'-1"	—
$b_1(E)$	388	#9	32'-9"	—
$b_2(E)$	294	#8	14'-0"	—
$b_3(E)$	294	#8	33'-8"	—
$b_4(E)$	196	#5	14'-3"	—
$b_9(E)$	388	#9	34'-7"	—
$b_{10}(E)$	38	#8	29'-6"	—
$b_{11}(E)$	38	#9	32'-0"	—
$s_1(E)$	184	#5	4'-2"	—
$s_2(E)$	276	#5	6'-1"	—
$s_3(E)$	40	#5	5'-6"	—
$u_2(E)$	284	#5	3'-11"	—
Concrete Superstructure		Cu. Yd.	578.3	
Reinforcement Bars, Epoxy Coated		Pound	171,370	
Bar Splicers		Each	421	
Protective Coat		Sq. Yd.	1,191	
Bridge Deck Grooving		Sq. Yd.	1,191	

**BILL OF MATERIAL FOR ONE UNIT**

(Two Units Required, Units 2 and 3)

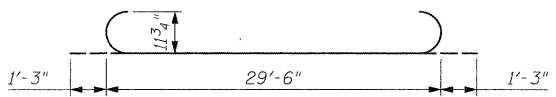
Bar	No.	Size	Length	Shape
$a_1(E)$	1160	#5	24'-5"	—
$b_1(E)$	388	#9	32'-9"	—
$b_2(E)$	294	#8	14'-0"	—
$b_3(E)$	294	#8	33'-8"	—
$b_4(E)$	196	#5	14'-3"	—
$b_9(E)$	388	#9	34'-7"	—
$s_1(E)$	184	#5	4'-2"	—
$s_2(E)$	276	#5	6'-1"	—
$u_2(E)$	222	#5	3'-11"	—
Concrete Superstructure		Cu. Yd.	547.1	
Reinforcement Bars, Epoxy Coated		Pound	162,160	
Bar Splicers		Each	277	
Protective Coat		Sq. Yd.	1,127	
Bridge Deck Grooving		Sq. Yd.	1,127	

**TYPE B6.24 CURB**

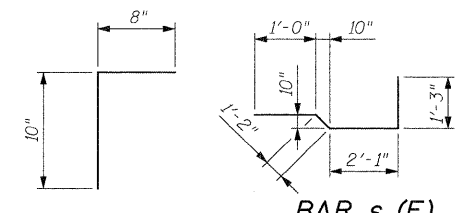
**BILL OF MATERIAL**

(IL RTE 53 Mainline Curb)

Bar	No.	Size	Length	Shape
$b_{15}(E)$	31	#4	30'-0"	—
$d(E)$	788	#4	1'-6"	—
Concrete Superstructure		Cu. Yd.	7.9	
Reinforcement Bars, Epoxy Coated		Pound	1,420	
Protective Coat		Sq. Yd.	132	



**BAR  $b_{11}(E)$**



**d(E) CURB BAR**

**BAR  $s_3(E)$**

**SUPERSTRUCTURE REINFORCING DETAILS**

**STRUCTURE NO. 022-0012**

DESIGNED	- J. ReFvik
CHECKED	- R. DiGiulio
DRAWN	- J. Vermillion
CHECKED	- R. DiGiulio

SHEET NO.	F.A.P RTE.	SECTION	COUNTY	TOTAL SHEETS	SHEET NO.
SA13 OF SA37	2578	532B	DUPAGE	781	617
			CONTRACT NO. 60477		
12/3/2010		ILLINOIS FED. AID PROJECT			

**PATRICK ENGINEERING INC.**  
4970 VARSITY DRIVE  
LISLE, IL 60532  
patrickengineering.com