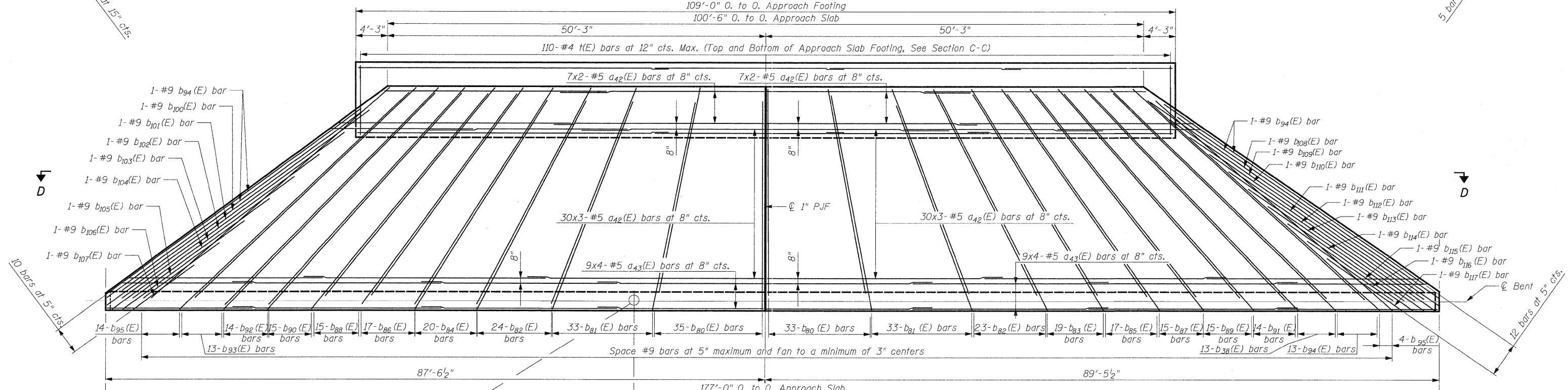


TOP REINFORCING



BOTTOM REINFORCING

Sta. 14+52.50 (@ Norwood Ave.)
Sta. 244+88.87 (IL Rte. 53) (Offset 47'-6" Left)

@ Norwood Ave. 17'-5 1/2"

**NORWOOD AVENUE
WEST APPROACH SLAB DETAILS
STRUCTURE NO. 022-0012**

DESIGNED	- J. Refvik
CHECKED	- R. DiGiulio
DRAWN	- J. Refvik
CHECKED	- R. DiGiulio

NOTES:

1. For Bar List and Bill of Material see Sheet SA18.
2. Bars indicated thus 18x4-#5 etc. indicates 18 lines of bars with 4 lengths per line.
3. For Sections C-C and D-D see Sheet SA18.
4. For Section F-F see Sheet SA14.

PATRICK ENGINEERING
PATRICK ENGINEERING INC.
4970 VARSITY DRIVE
LISLE, IL 60532
patrickengineering.com

SHEET NO. SA16 OF SA37	F.A.P RTE. 2578	SECTION 532B	COUNTY DUPAGE	TOTAL SHEETS 781	SHEET NO. 620
	CONTRACT NO. 60477				
12/3/2010		ILLINOIS FED. AID PROJECT			