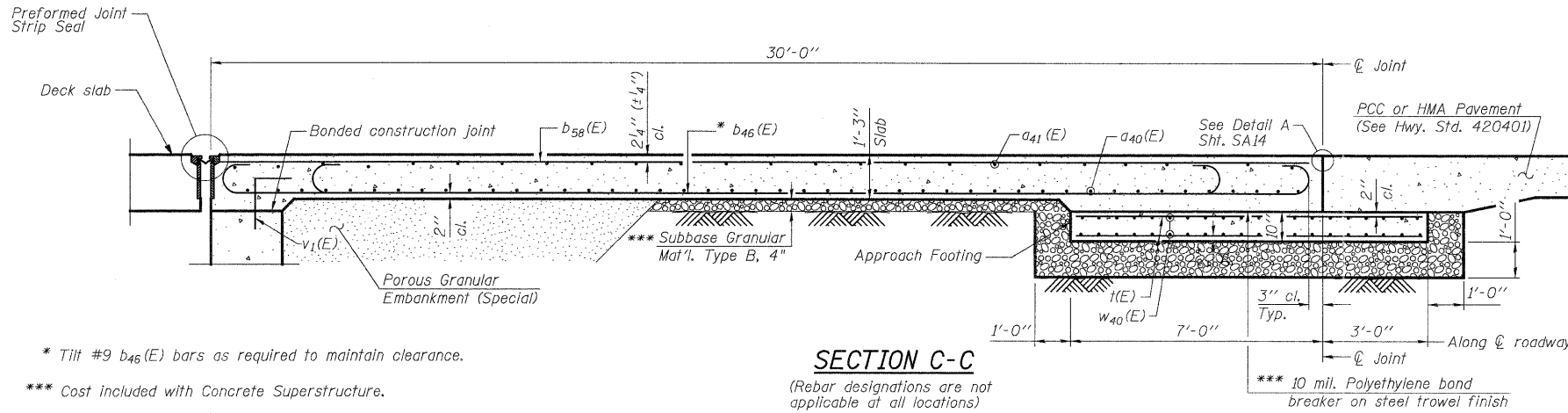


**EAST APPROACH SLAB
BILL OF MATERIAL**

**WEST APPROACH SLAB
BILL OF MATERIAL**



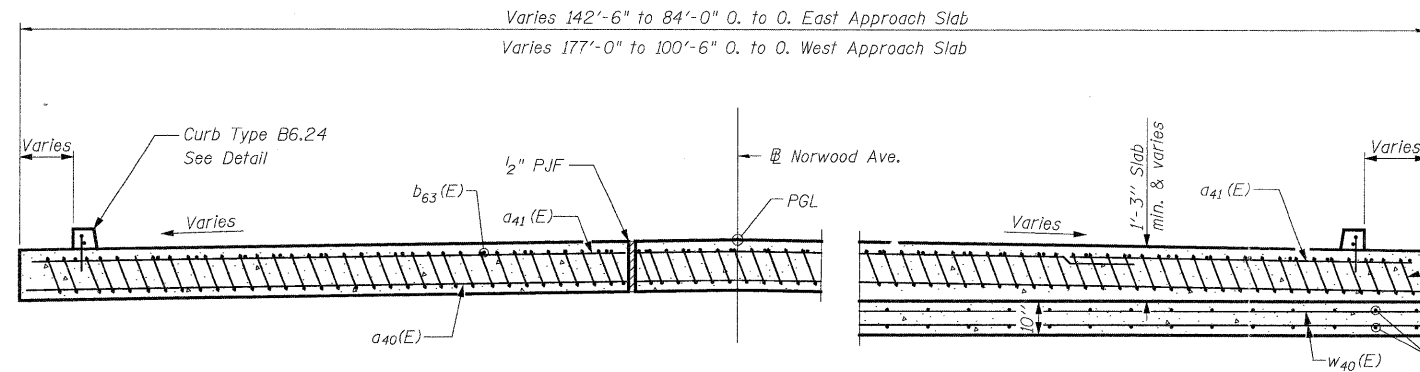
* Tilt #9 b45(E) bars as required to maintain clearance.
*** Cost included with Concrete Superstructure.

EAST

Bar	"L"
b39(E)	39'-3"
b40(E)	37'-9"
b41(E)	34'-9"
b42(E)	33'-3"
b43(E)	31'-9"
b44(E)	36'-3"
b45(E)	30'-3"
b46(E)	28'-9"
b47(E)	43'-5"
b48(E)	36'-7"
b49(E)	29'-0"
b50(E)	20'-5"
b51(E)	11'-10"
b52(E)	34'-0"
b53(E)	32'-10"
b54(E)	34'-10"
b55(E)	27'-9"
b56(E)	20'-7"
b57(E)	13'-4"

Bar	No.	Size	Length	Shape
a40(E)	254	#5	26'-6"	—
a41(E)	136	#4	26'-7"	—
b39(E)	5	#9	41'-9"	⌋
b40(E)	28	#9	40'-3"	⌋
b41(E)	32	#9	37'-3"	⌋
b42(E)	34	#9	35'-9"	⌋
b43(E)	40	#9	34'-3"	⌋
b44(E)	28	#9	38'-9"	⌋
b45(E)	50	#9	32'-9"	⌋
b46(E)	112	#9	31'-3"	⌋
b47(E)	3	#9	44'-8"	⌋
b48(E)	2	#9	36'-7"	⌋
b49(E)	2	#9	30'-3"	⌋
b50(E)	2	#9	21'-8"	⌋
b51(E)	1	#9	13'-1"	⌋
b52(E)	2	#9	36'-6"	⌋
b53(E)	2	#9	35'-4"	⌋
b54(E)	2	#9	36'-1"	⌋
b55(E)	2	#9	29'-0"	⌋
b56(E)	2	#9	21'-10"	⌋
b57(E)	1	#9	14'-7"	⌋
b58(E)	56	#4	20'-10"	⌋
b59(E)	4	#4	23'-6"	⌋
b61(E)	34	#4	18'-10"	⌋
b62(E)	14	#4	22'-0"	⌋
b63(E)	112	#4	17'-10"	⌋
b64(E)	7	#4	15'-3"	⌋
b74(E)	7	#4	18'-3"	⌋
b200(E)	4	#4	28'-0"	⌋
d (E)	85	#4	1'-6"	—
t(E)	188	#4	9'-8"	—
w40(E)	160	#5	26'-0"	—
Concrete Superstructure	Cu. Yd.		175.7	
Concrete Structures	Cu. Yd.		28.8	
Reinforcement Bars, Epoxy Coated	Pound		58,890	
Protective Coat	Sq. Yd.		405	
Bridge Deck Grooving	Sq. Yd.		391	

Bar	No.	Size	Length	Shape
a42(E)	208	#5	30'-0"	—
a43(E)	54	#5	24'-3"	—
a44(E)	110	#4	30'-0"	—
a45(E)	36	#4	24'-7"	—
b38(E)	13	#9	42'-6"	⌋
b80(E)	68	#9	30'-2"	⌋
b81(E)	66	#9	31'-8"	⌋
b82(E)	47	#9	33'-6"	⌋
b83(E)	19	#9	34'-9"	⌋
b84(E)	20	#9	35'-2"	⌋
b85(E)	17	#9	36'-4"	⌋
b86(E)	17	#9	36'-7"	⌋
b87(E)	15	#9	37'-10"	⌋
b88(E)	15	#9	38'-1"	⌋
b89(E)	15	#9	39'-5"	⌋
b90(E)	15	#9	39'-8"	⌋
b91(E)	14	#9	40'-11"	⌋
b92(E)	14	#9	41'-3"	⌋
b93(E)	13	#9	42'-10"	⌋
b94(E)	17	#9	44'-1"	⌋
b95(E)	18	#9	44'-6"	⌋
b100(E)	1	#9	41'-10"	⌋
b101(E)	1	#9	40'-3"	⌋
b102(E)	1	#9	33'-8"	⌋
b103(E)	1	#9	31'-2"	⌋
b104(E)	1	#9	23'-8"	⌋
b105(E)	1	#9	21'-2"	⌋
b106(E)	1	#9	13'-8"	⌋
b107(E)	1	#9	11'-2"	⌋
b108(E)	1	#9	45'-8"	⌋
b109(E)	1	#9	45'-0"	⌋
b110(E)	1	#9	39'-4"	⌋
b111(E)	1	#9	38'-0"	⌋
b112(E)	1	#9	31'-6"	⌋
b113(E)	1	#9	29'-11"	⌋
b114(E)	1	#9	23'-5"	⌋
b115(E)	1	#9	21'-10"	⌋
b116(E)	1	#9	15'-3"	⌋
b117(E)	1	#9	13'-9"	⌋
b120(E)	56	#4	24'-0"	⌋
b121(E)	20	#4	22'-6"	⌋
b122(E)	44	#4	20'-10"	⌋
b123(E)	60	#4	19'-3"	⌋
b124(E)	88	#4	17'-6"	⌋
b125(E)	14	#4	25'-7"	⌋
b200(E)	4	#4	28'-0"	⌋
d (E)	103	#4	1'-6"	—
t(E)	220	#4	9'-8"	—
w41(E)	160	#5	29'-9"	—
Concrete Superstructure	Cu. Yd.		216.0	
Concrete Structures	Cu. Yd.		33.7	
Reinforcement Bars, Epoxy Coated	Pound		72,000	
Protective Coat	Sq. Yd.		490	
Bridge Deck Grooving	Sq. Yd.		473	

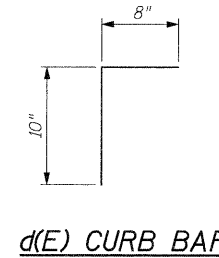


AT APPROACH FOOTING

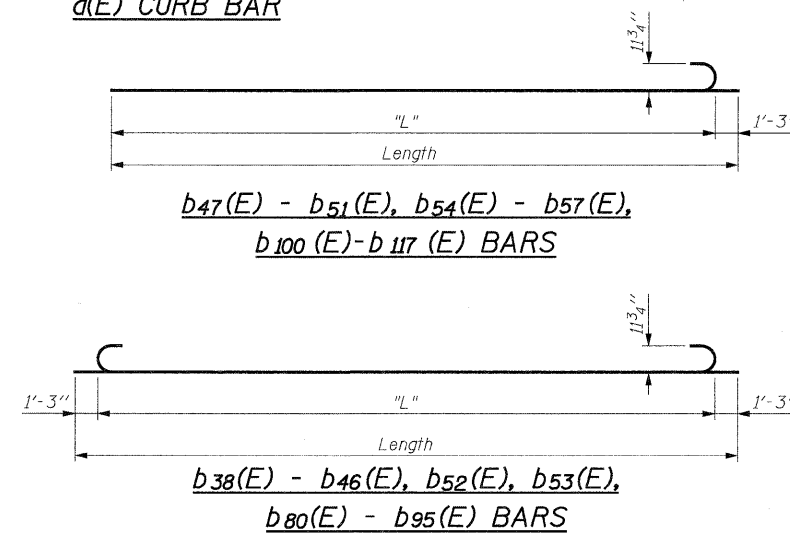
WEST

Bar	"L"
b38(E)	40'-0"
b80(E)	27'-8"
b81(E)	29'-2"
b82(E)	31'-0"
b83(E)	32'-3"
b84(E)	32'-8"
b85(E)	33'-10"
b86(E)	34'-1"
b87(E)	35'-4"
b88(E)	35'-7"
b89(E)	36'-11"
b90(E)	37'-2"
b91(E)	38'-5"
b92(E)	38'-9"
b93(E)	40'-4"
b94(E)	41'-7"
b95(E)	42'-0"

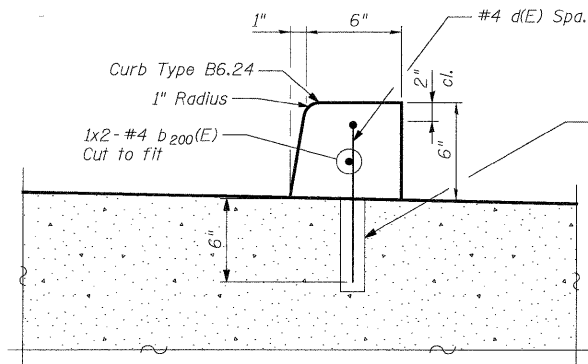
Bar	"L"
b100(E)	40'-7"
b101(E)	39'-0"
b102(E)	32'-5"
b103(E)	29'-11"
b104(E)	22'-5"
b105(E)	19'-11"
b106(E)	12'-5"
b107(E)	9'-11"
b108(E)	44'-5"
b109(E)	43'-9"
b110(E)	38'-1"
b111(E)	36'-9"
b112(E)	30'-3"
b113(E)	28'-8"
b114(E)	22'-2"
b115(E)	20'-7"
b116(E)	14'-0"
b117(E)	12'-6"



d(E) CURB BAR



NEAR APPROACH BENT



Core and set #4 d(E) bar according to Article 509.06 of the Standard Specifications. Cored holes shall be roughened or scored per adhesive manufacturer's recommendations. Maximum depth of hole shall not exceed 7". The cost associated with furnishing, coring, and setting bars for the curb shall be included in Concrete Superstructure.

**NORWOOD AVENUE
APPROACH SLAB SECTIONS
STRUCTURE NO. 022-0012**

DESIGNED	- J. Refvik
CHECKED	- R. DiGiulio
DRAWN	- J. Refvik
CHECKED	- R. DiGiulio

- Notes:
- See sheet SA14 of SA37 for Detail A.
 - Approach slab shall be paid for as Concrete Superstructure.
 - Approach footing concrete shall be paid for as Concrete Structures.
 - Reinforcement shall be paid for as Reinforcement Bars, Epoxy Coated.
 - For v1(E) bar details, see sheets SA24 and SA25 of SA37.
 - The approach footing maximum applied service bearing pressure (Qmax) = 2.0 ksf.
 - Cost of excavation for approach footing included with Concrete Structures.
 - For Porous Granular Embankment (Special) and drainage treatment details, see sheet SA2 of SA37.

PATRICK ENGINEERING INC.
4970 VARSITY DRIVE
LISLE, IL 60532
patrickengineering.com

SHEET NO. SA18 OF SA37	F.A.P RTE. 2578	SECTION 532B	COUNTY DUPAGE	TOTAL SHEETS 781	SHEET NO. 622
	CONTRACT NO. 60477				
12/3/2010		ILLINOIS FED. AID PROJECT			