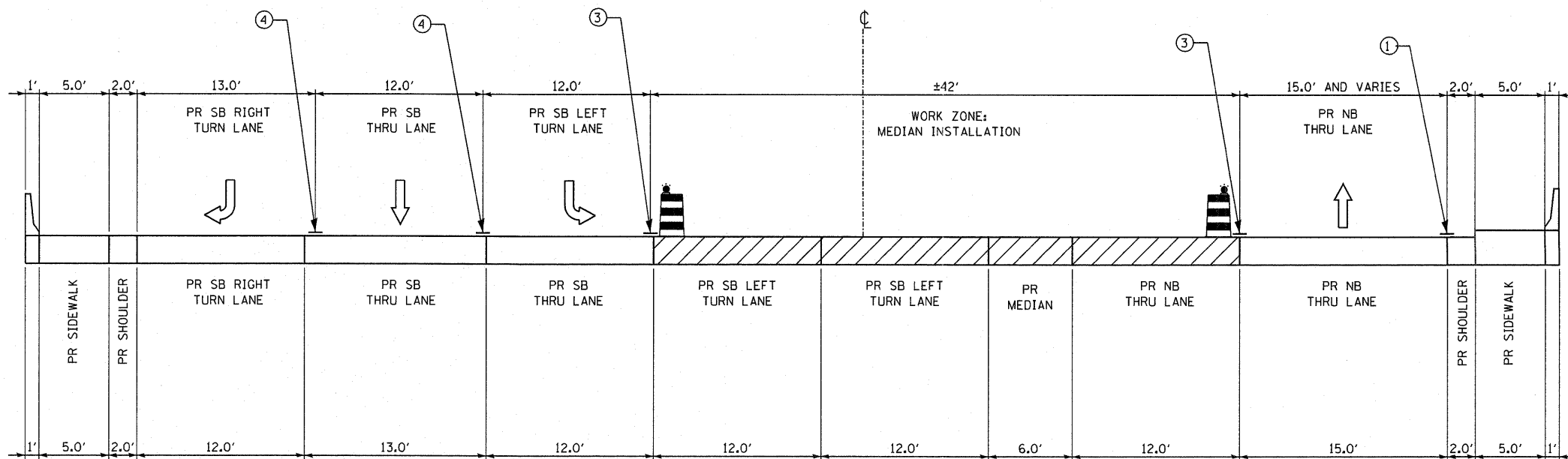


M-M  
STAGE 3: CENTRAL AVENUE; STA. 17+00



N-N  
STAGE 3: CENTRAL AVENUE; STA. 23+00

**LEGEND**

- TRAFFIC MOVEMENT
- PROPOSED TEMPORARY CONCRETE BARRIER (WITH MONO-DIRECTIONAL PRISMATIC REFLECTORS ON TOP AND SIDE FACING TRAFFIC)
- WORK ZONE
- DRUM WITH MONO-DIRECTIONAL STEADY BURNING LIGHT

**NOTES:**

1. WET REFLECTIVE TEMPORARY TAPE TYPE III, 4" LINE (WHITE)
2. WET REFLECTIVE TEMPORARY TAPE TYPE III, 5" SKIP-DASH (WHITE) 10' LINE WITH 30' SPACE
3. WET REFLECTIVE TEMPORARY TAPE TYPE III, 4" LINE (YELLOW)
4. WET REFLECTIVE TEMPORARY PAVEMENT MARKING - LINE 6" (WHITE)
5. WET REFLECTIVE TEMPORARY PAVEMENT MARKING - LINE 6" (YELLOW)
6. WET REFLECTIVE TEMPORARY TAPE TYPE III, 4" SKIP-DASH (WHITE) 10' LINE WITH 30' SPACE
7. WET REFLECTIVE TEMPORARY TAPE TYPE III, 4" DOUBLE YELLOW CENTERLINE AT 11" C-C
8. TEMPORARY PAVEMENT MARKING - LINE 6"
9. EXISTING PAVEMENT MARKING LINE 4" (WHITE)
10. POLYUREA PAVEMENT MARKING TYPE I - LINE 4" (WHITE)
11. POLYUREA PAVEMENT MARKING TYPE I - LINE 6" (WHITE)
12. POLYUREA PAVEMENT MARKING TYPE I - 4" DOUBLE YELLOW CENTERLINE AT 11" C-C

TYLIN INTERNATIONAL	USER NAME = #USER#	DESIGNED - RLB	REVISED - 05/13/2011 RLD	STATE OF ILLINOIS DEPARTMENT OF TRANSPORTATION	CENTRAL AVENUE OVER I-55 MAINTENANCE OF TRAFFIC - PROPOSED TYPICAL SECTION STAGE 3			F.A.I. RTE. I-55	SECTION 0711.2R & 1011.IBR	COUNTY COOK	TOTAL SHEETS 741	SHEET NO. 33
	PLOT SCALE = #SCALE#	CHECKED - AZ	REVISED -		SCALE: NONE	SHEET NO. 5 OF 5 SHEETS	STA. TO STA.	CONTRACT NO. 60999				
	PLOT DATE = 5/13/2011	DATE - 03/25/2011	REVISED -		FED. ROAD DIST. NO. [ILLINOIS] FED. AID PROJECT							