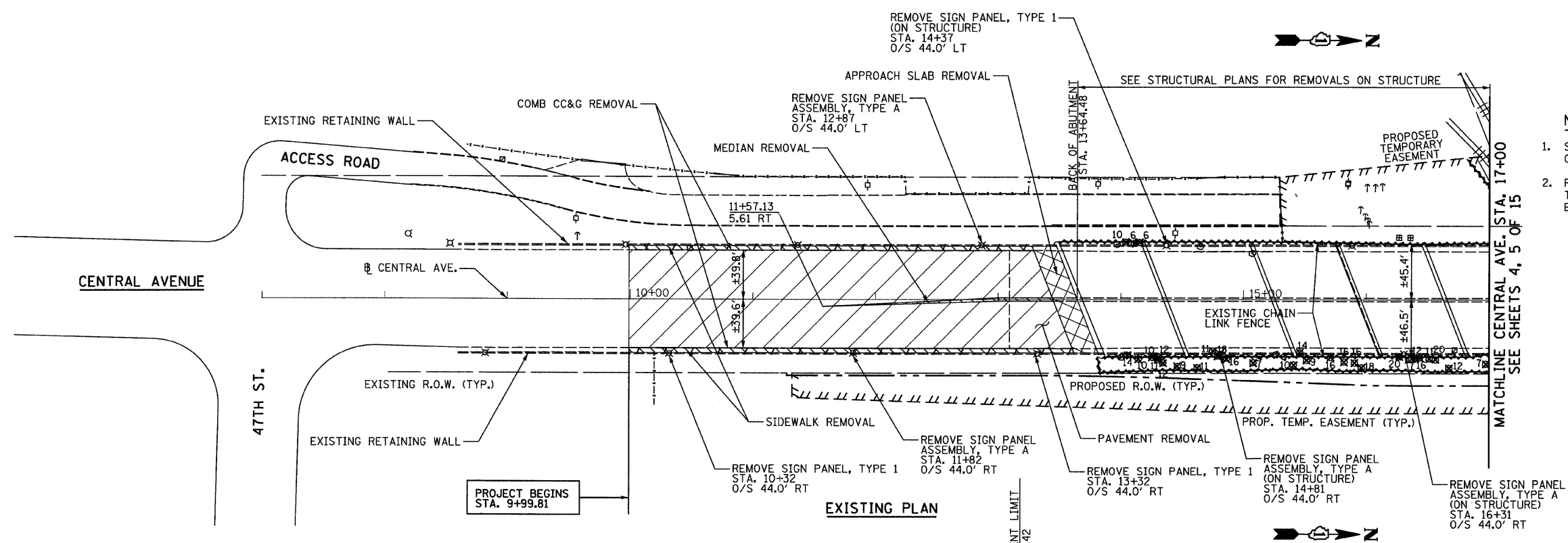
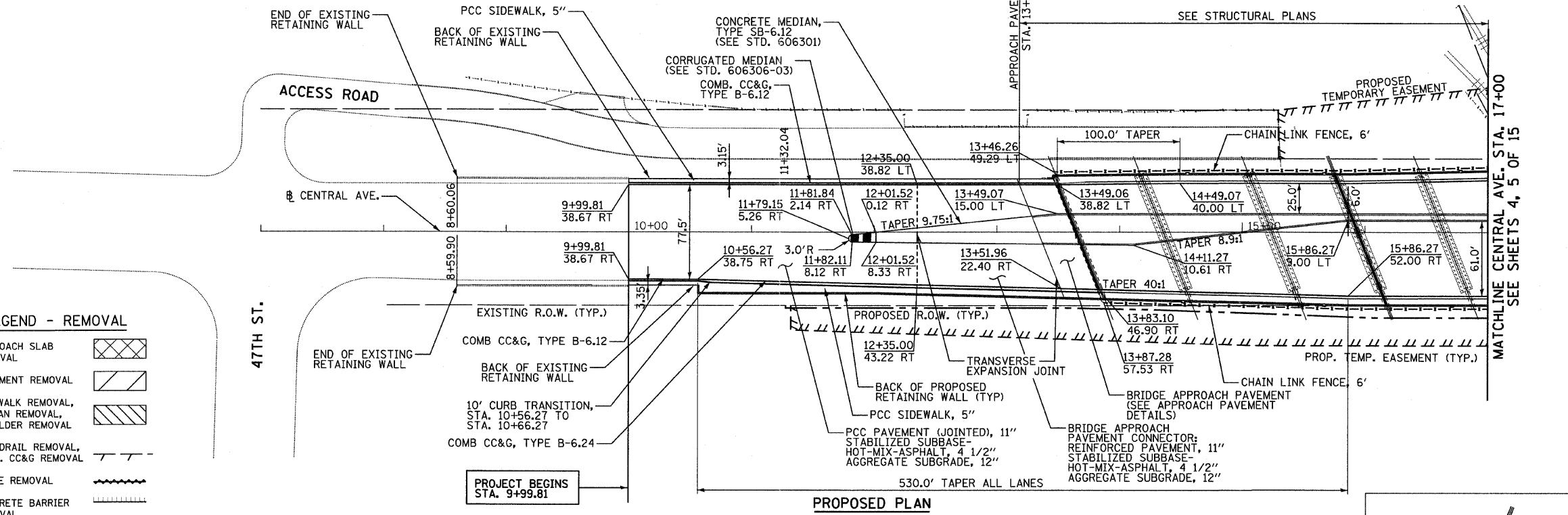


P:\01345\ROAD\55plsh01.dgn 4/28/2011 12:40 PM

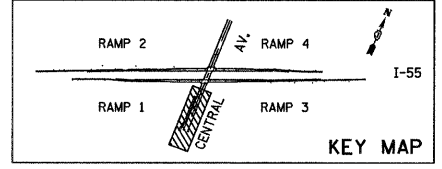


- NOTES:**
1. SEE EXISTING LIGHTING PLAN FOR REMOVAL OF EXISTING LIGHTING UNITS.
 2. REMOVE SIGN PANEL ASSEMBLY, TYPE A OR TYPE B INCLUDES THE REMOVAL OF THE EXISTING SIGN PANELS.



LEGEND - REMOVAL

- APPROACH SLAB REMOVAL
- PAVEMENT REMOVAL
- SIDEWALK REMOVAL, MEDIAN REMOVAL, SHOULDER REMOVAL
- GUARDRAIL REMOVAL, COMB. CC&G REMOVAL
- FENCE REMOVAL
- CONCRETE BARRIER REMOVAL
- TREE REMOVAL (SIZE IN UNITS)
- TREE TRUNK PROTECTION



TYLIN INTERNATIONAL	USER NAME = #USER#	DESIGNED - AZ	REVISED -	STATE OF ILLINOIS DEPARTMENT OF TRANSPORTATION	CENTRAL AVENUE OVER I-55 EXISTING AND PROPOSED PLAN - CENTRAL AVENUE				F.A.I. RTE. I-55	SECTION 0711.2R & 1011.1BR	COUNTY COOK	TOTAL SHEETS 741	SHEET NO. 106	
	PLOT SCALE = #SCALE#	CHECKED - DMJ	REVISED -		SCALE: 1/50	SHEET NO. 1 OF 15 SHEETS	STA. 9+99.81	TO STA. 17+00	CONTRACT NO. 60999					
	PLOT DATE = 4/28/2011	DATE - 03/25/2011	REVISED -											
	FED. ROAD DIST. NO. [ILLINOIS] FED. AID PROJECT													

P:\01345\ROAD\55plsh01.dgn