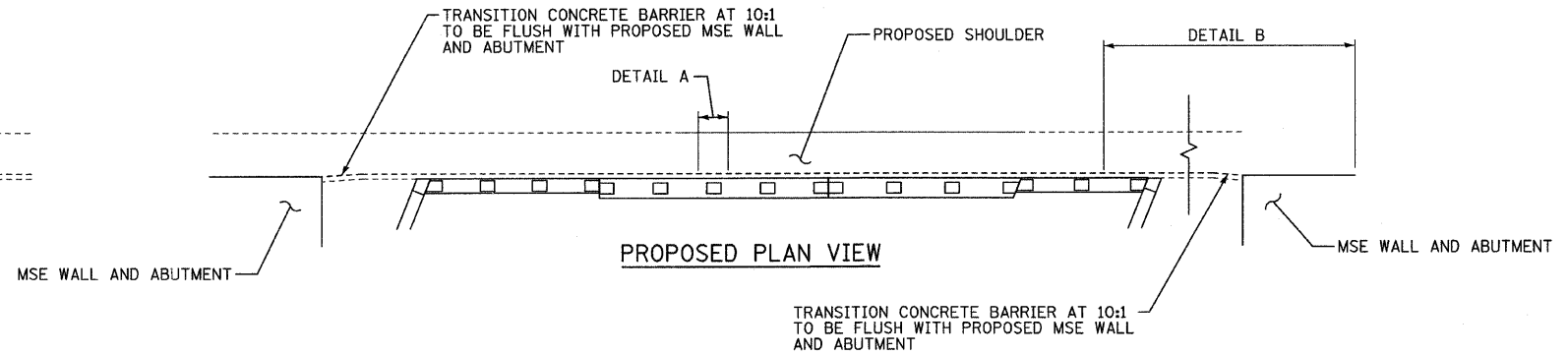
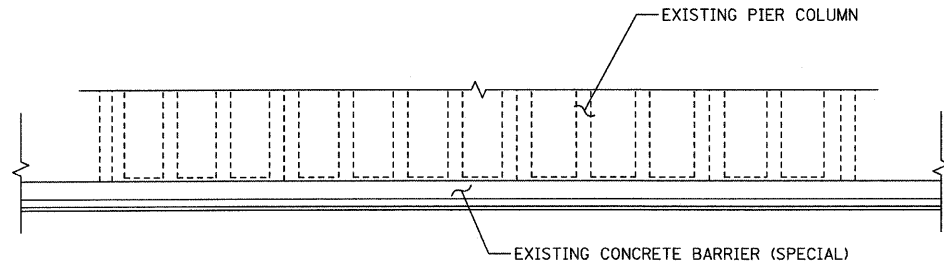


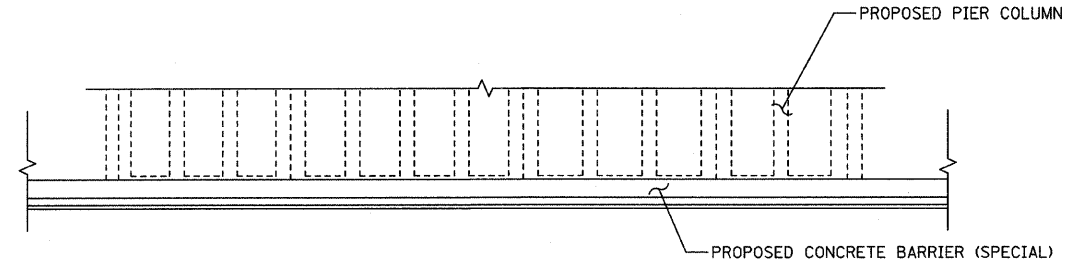
EXISTING PLAN VIEW



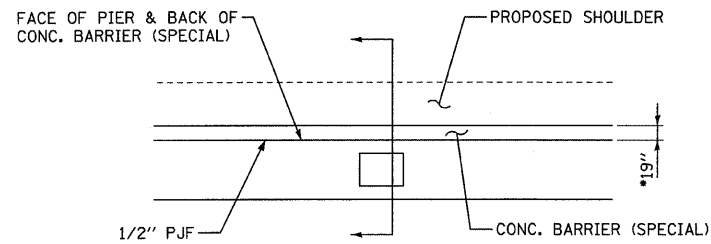
PROPOSED PLAN VIEW



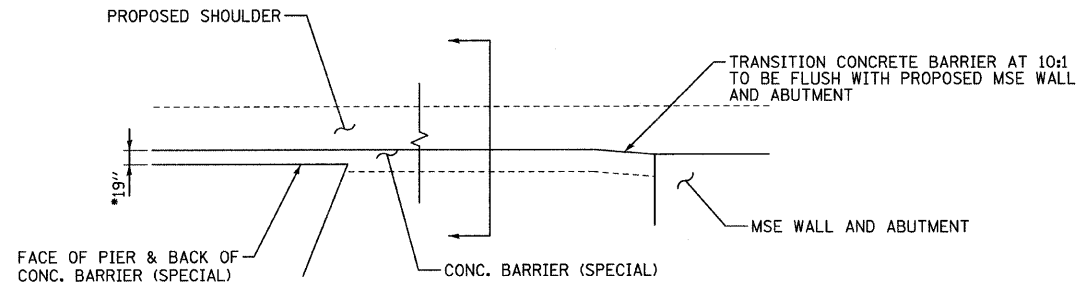
EXISTING ELEVATION VIEW



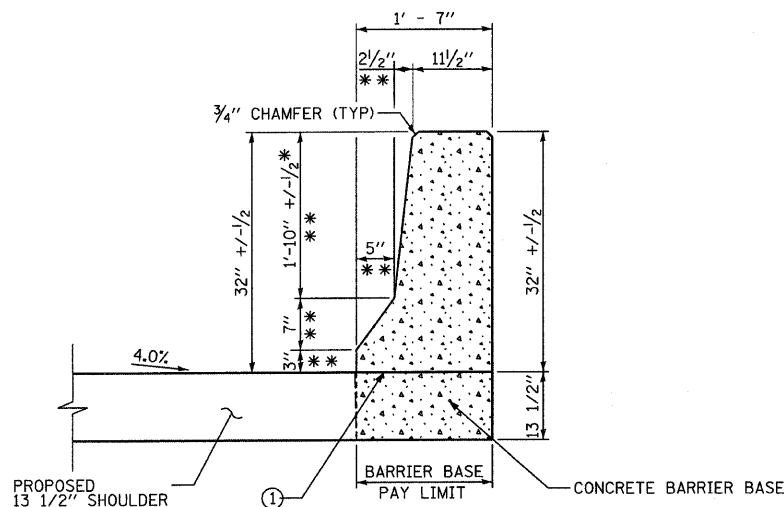
PROPOSED ELEVATION VIEW



DETAIL A

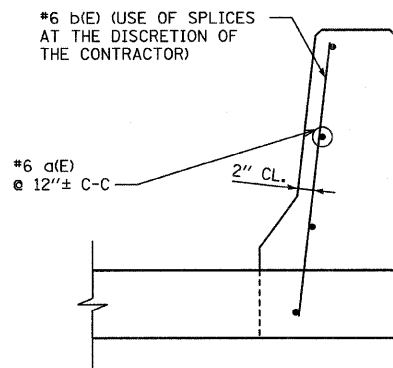


DETAIL B

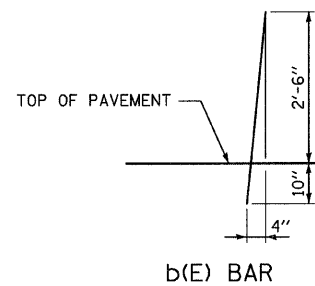


DIMENSIONS

** ALL DIMENSIONS MATCH BARRIER FACE AS DETAILED IN IDOT STANDARD 637001
 ① OPTIONAL CONSTRUCTION JOINT



REINFORCEMENT



b(E) BAR

* IF NEEDED WIDTH SHALL BE ADJUSTED SO THAT BACK OF CONC. BARRIER (SPECIAL) SITS AGAINST FACE OF PIER.

NOTES:

- FOR ADDITIONAL CONCRETE BARRIER DETAILS, SEE STATE STANDARD 637001.
- ALL REINFORCEMENT BARS SHALL BE SEATED IN THE FINAL POSITION PRIOR TO PLACING CONCRETE. BARS CANNOT BE MUCKED INTO PLACE.
- THE FURNISHING AND PLACING OF REINFORCEMENT BARS SHALL NOT BE PAID FOR SEPARATELY BUT SHALL BE INCLUDED IN THE UNIT PRICE OF CONCRETE BARRIER (SPECIAL) AND CONCRETE BARRIER BASE (SPECIAL).
- CLASS SI CONCRETE SHALL BE USED THROUGHOUT.
- PROTECTIVE COAT SHALL BE PLACED OVER EXPOSED CONCRETE SURFACE FOR ENTIRE LENGTH.
- ALL BARS SHALL HAVE A MINIMUM COVER OF 2 INCHES.
- ALL REINFORCEMENT BARS SHALL BE EPOXY COATED.
- THE CONCRETE BARRIER BASE SHALL BE CONSTRUCTED IN ACCORDANCE WITH SECTION 637 OF THE STANDARD SPECIFICATIONS.
- CONCRETE BARRIER SHALL BE CONSTRUCTED IN ACCORDANCE WITH APPLICABLE PROVISIONS OF SECTIONS 503, 504, 637.
- 1/2" PREFORMED JOINT FILLER TO BE INCLUDED IN THE UNIT PRICE OF CONCRETE BARRIER (SPECIAL) AND CONCRETE BARRIER BASE (SPECIAL).

TYLIN INTERNATIONAL	USER NAME = #USER#	DESIGNED - RLB	REVISED -	STATE OF ILLINOIS DEPARTMENT OF TRANSPORTATION	CENTRAL AVENUE OVER I-55			F.A.I. RTE.	SECTION	COUNTY	TOTAL SHEETS	SHEET NO.	
	PLOT SCALE = #SCALE#	DRAWN - RLB	REVISED -		SCALE: NONE	SHEET NO. 1 OF 1 SHEETS	STA.	TO STA.	I-55	0711.2R & 1011.1BR	COOK	741	120A
	PLOT DATE = 4/28/2011	CHECKED - JPM	REVISED -		SINGLE FACE CONCRETE BARRIER (SPECIAL) DETAIL			CONTRACT NO. 60999					
		DATE - 03/25/2011	REVISED -					FED. ROAD DIST. NO. [ILLINOIS] FED. AID PROJECT					