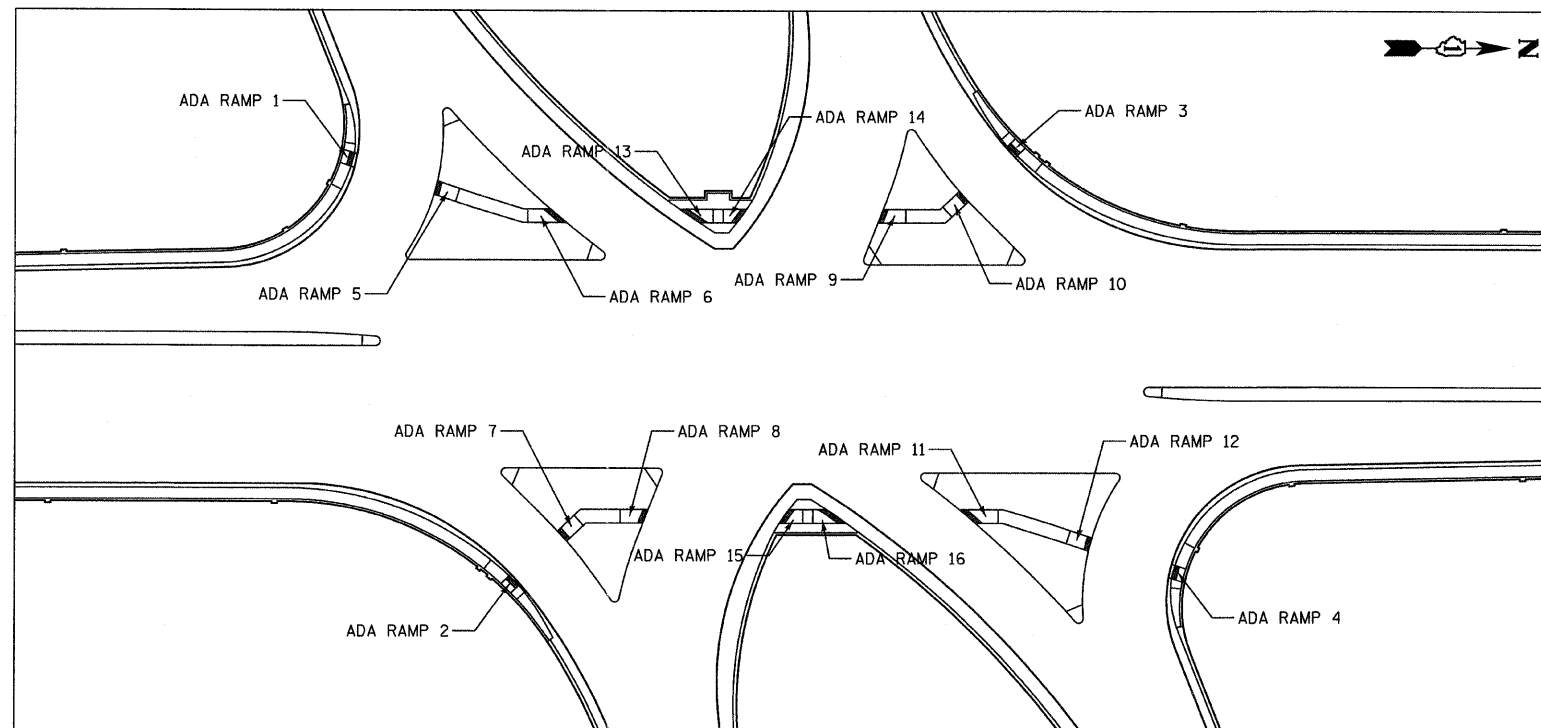
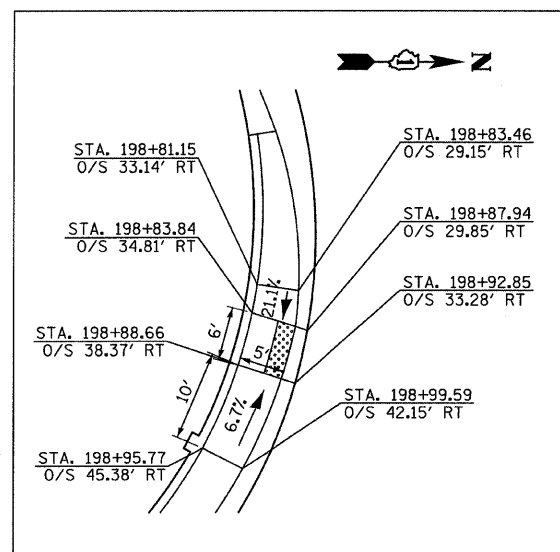


ADA RAMP KEY

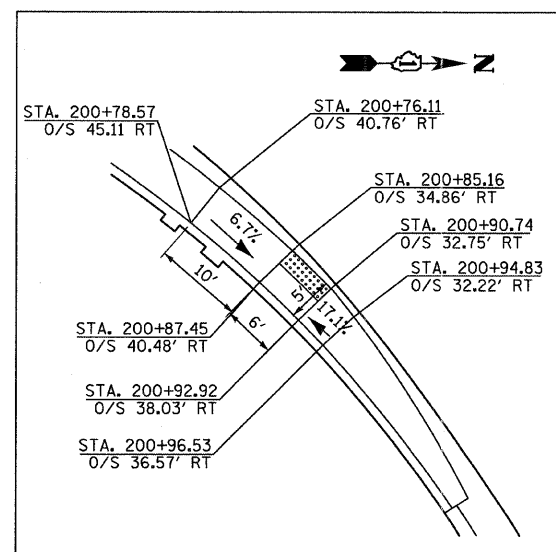


NOTES:

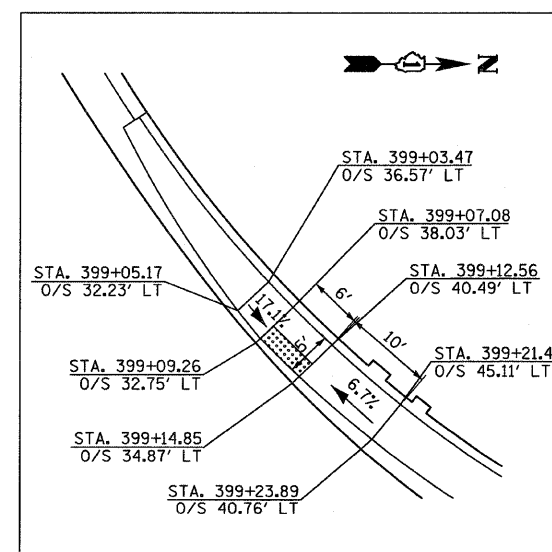
1. SEE ADA RAMP KEY FOR RAMP NUMBERING.
2. RAMPS 5-16 SHALL HAVE A LEVEL LANDING AT THE TOP CONFORMING TO STANDARD 424001.
3. FOR CONSTRUCTION DETAILS SEE STRUCTURAL SHEETS.
4. SLOPES CALLED OUT ON RAMPS REPRESENT THE MAXIMUM SLOPE OF THE RAMP.



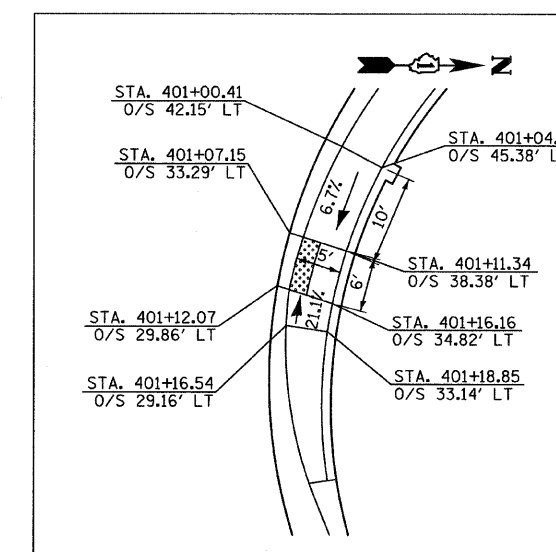
TYPE B ADA RAMP  
RAMP NUMBER 1



TYPE B ADA RAMP  
RAMP NUMBER 2



TYPE B ADA RAMP  
RAMP NUMBER 3



TYPE B ADA RAMP  
RAMP NUMBER 4

TYLIN INTERNATIONAL	USER NAME = #USER#	DESIGNED - RLB	REVISED -	STATE OF ILLINOIS DEPARTMENT OF TRANSPORTATION	CENTRAL AVENUE OVER I-55 ADA RAMP DETAILS			F.A.I. RTE. I-55	SECTION 0711.2R & 1011.1BR	COUNTY COOK	TOTAL SHEETS 741	SHEET NO. 121	
	PLOT SCALE = #SCALE#	CHECKED - AZ	REVISED -		SCALE: NONE	SHEET NO. 1 OF 2 SHEETS	STA.	TO STA.	CONTRACT NO. 60999				
	PLOT DATE = 4/28/2011	DATE - 03/25/2011	REVISED -										
	FED. ROAD DIST. NO. [ILLINOIS] FED. AID PROJECT												