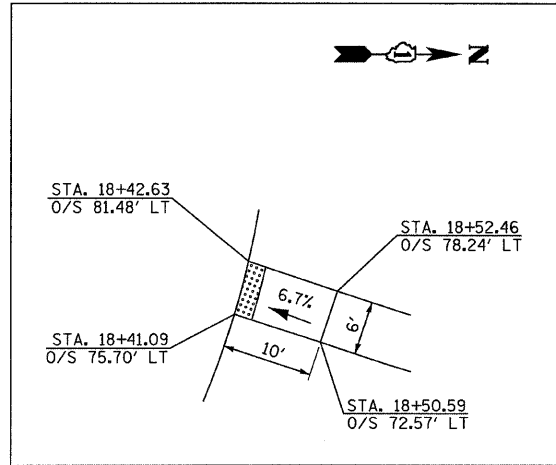
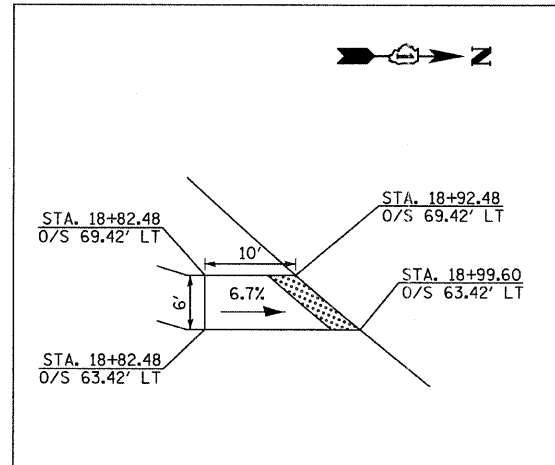


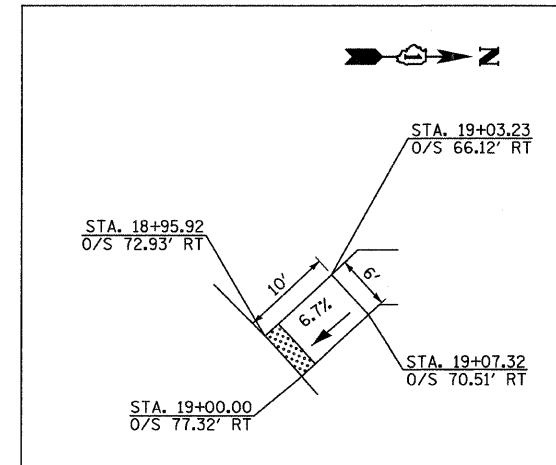
NOTE: SEE ADA RAMP KEY FOR RAMP NUMBERING



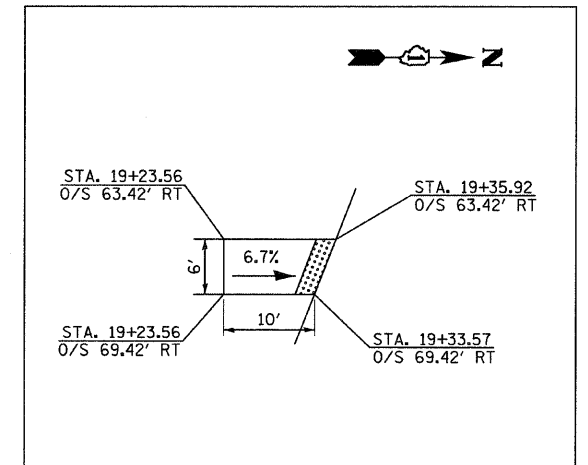
TYPE A ADA RAMP  
RAMP NUMBER 5



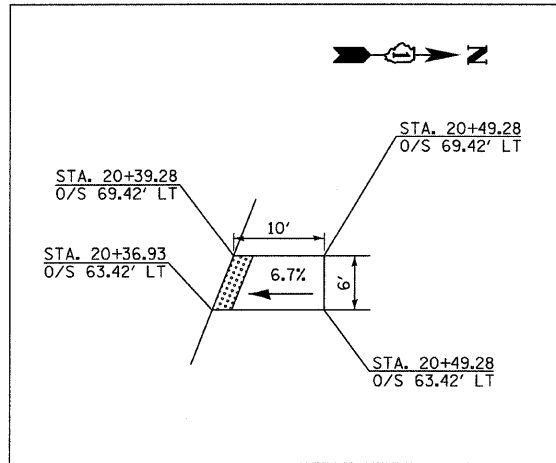
TYPE A ADA RAMP  
RAMP NUMBER 6



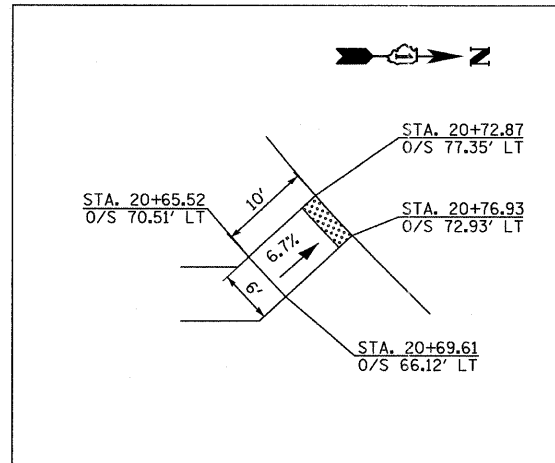
TYPE A ADA RAMP  
RAMP NUMBER 7



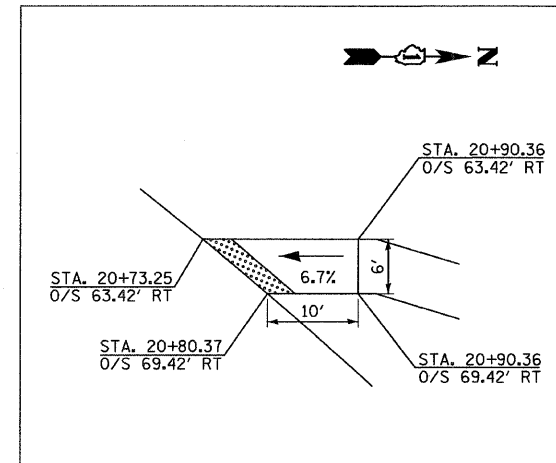
TYPE A ADA RAMP  
RAMP NUMBER 8



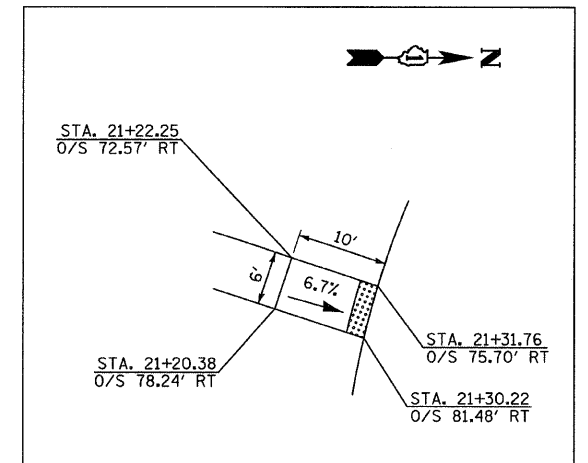
TYPE A ADA RAMP  
RAMP NUMBER 9



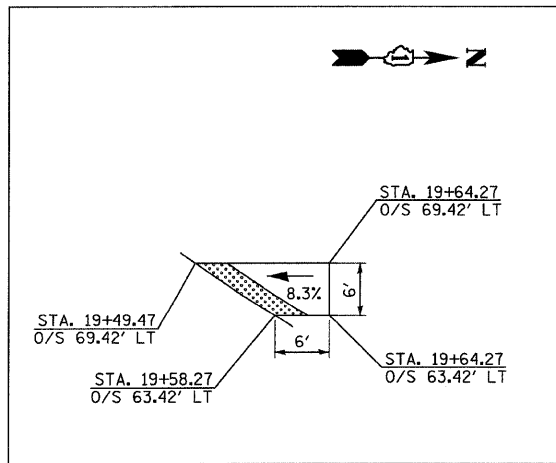
TYPE A ADA RAMP  
RAMP NUMBER 10



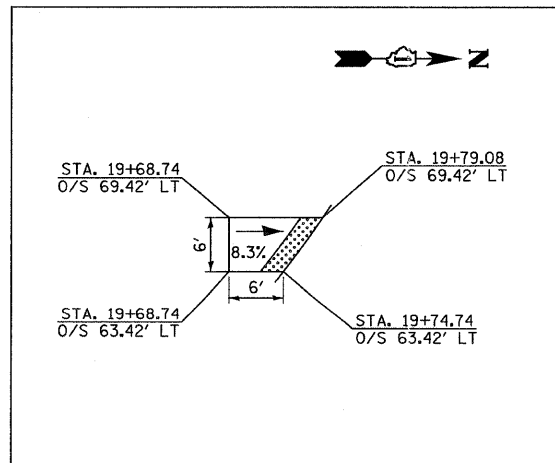
TYPE A ADA RAMP  
RAMP NUMBER 11



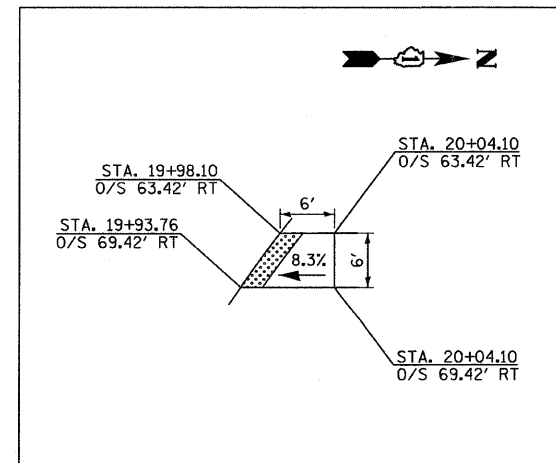
TYPE A ADA RAMP  
RAMP NUMBER 12



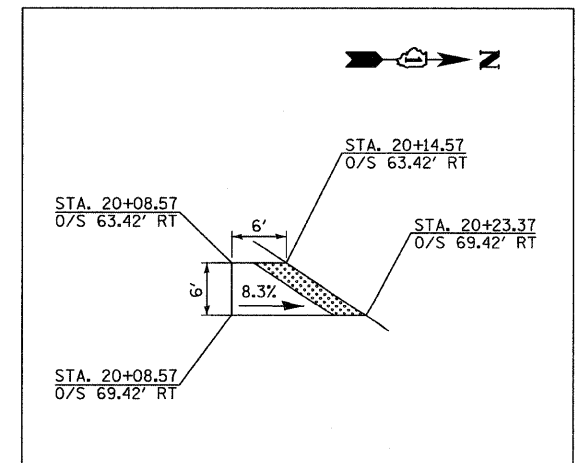
TYPE A ADA RAMP  
RAMP NUMBER 13



TYPE A ADA RAMP  
RAMP NUMBER 14



TYPE A ADA RAMP  
RAMP NUMBER 15



TYPE A ADA RAMP  
RAMP NUMBER 16

<b>TYLINT</b> INTERNATIONAL USER NAME = #USER* PLOT SCALE = #SCALE* PLOT DATE = 4/28/2011	DESIGNED - RLB	REVISED -	<b>STATE OF ILLINOIS</b> <b>DEPARTMENT OF TRANSPORTATION</b>	<b>CENTRAL AVENUE OVER I-55</b> <b>ADA RAMP DETAILS</b>		F.A.I. RTE. I-55	SECTION 0711.2R & 1011.1BR	COUNTY COOK	TOTAL SHEETS 741	SHEET NO. 122
	DRAWN - RLB	REVISED -		SCALE: NONE		SHEET NO. 2 OF 2 SHEETS	CONTRACT NO. 60999		FED. ROAD DIST. NO. [ILLINOIS] FED. AID PROJECT	
	CHECKED - AZ	REVISED -		STA. TO STA.						
	DATE - 03/25/2011	REVISED -								