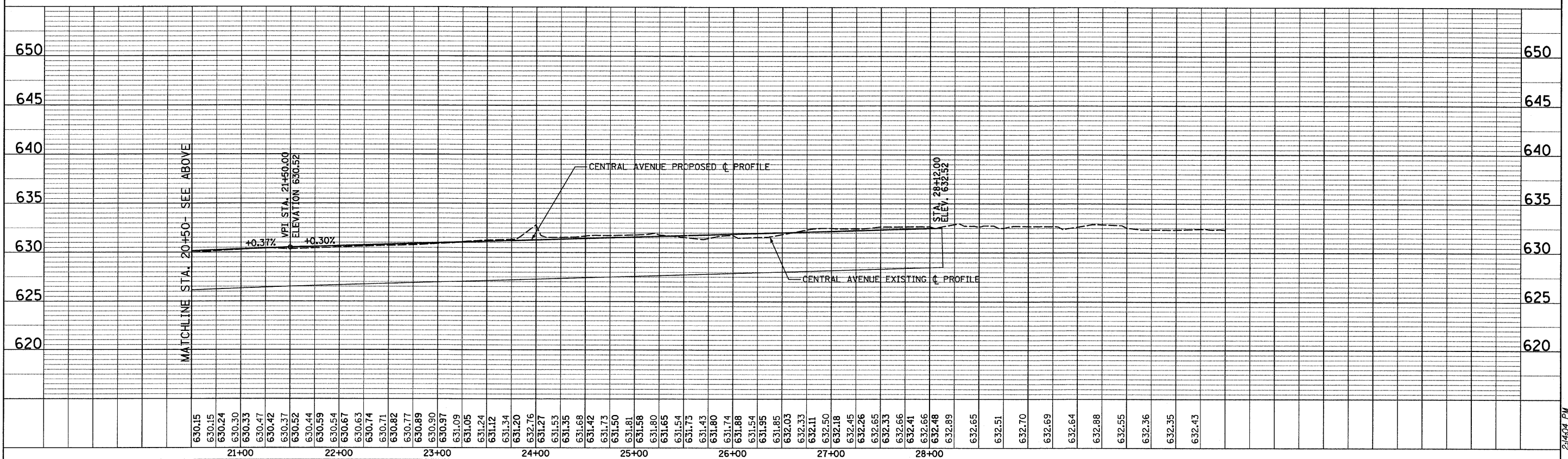
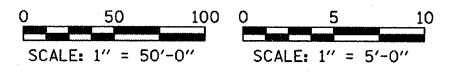
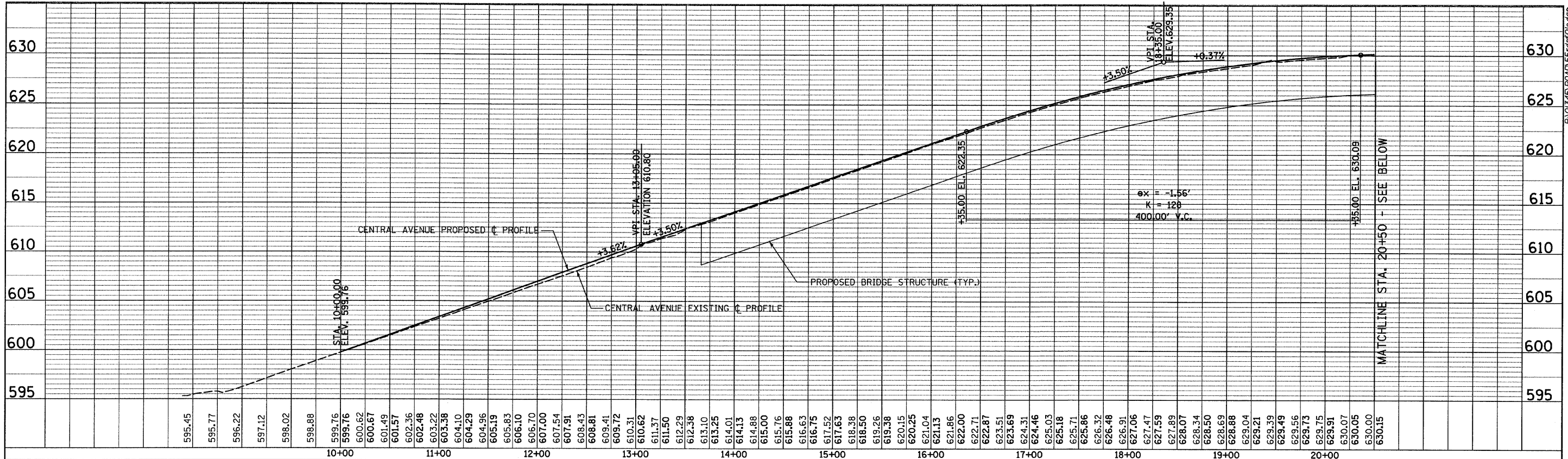


PLAN SURVEYED BY DATE
 ALIGNED CHECKED
 RT. OF WAY CHECKED
 NO. PLOTTED FILE NAME

PROFILE SURVEYED BY DATE
 GRADES CHECKED
 (B.M. NOTED)
 STRUCTURE NOTATIONS C/P/D
 NO. PLOTTED



TYLIN INTERNATIONAL USER NAME = #USER# PLOT SCALE = #SCALE# PLOT DATE = 4/28/2011	DESIGNED - JPM	REVISED -	STATE OF ILLINOIS DEPARTMENT OF TRANSPORTATION	CENTRAL AVENUE OVER I-55 ROADWAY PROFILE - CENTRAL AVENUE		F.A. RTE. 55	SECTION 0711.2R & 1011.1BR	COUNTY COOK	TOTAL SHEETS 741	SHEET NO. 123
	DRAWN - JPM	REVISED -		SCALE: HOR. 1"=50' VERT. 1"=5'		SHEET NO. 1 OF 1 SHEETS	FED. ROAD DIST. NO. [ILLINOIS] FED. AID PROJECT		CONTRACT NO. 60999	
	CHECKED - AZ	REVISED -		STA. 10+00 TO STA. 28+12						
	DATE - 03/25/2011	REVISED -								