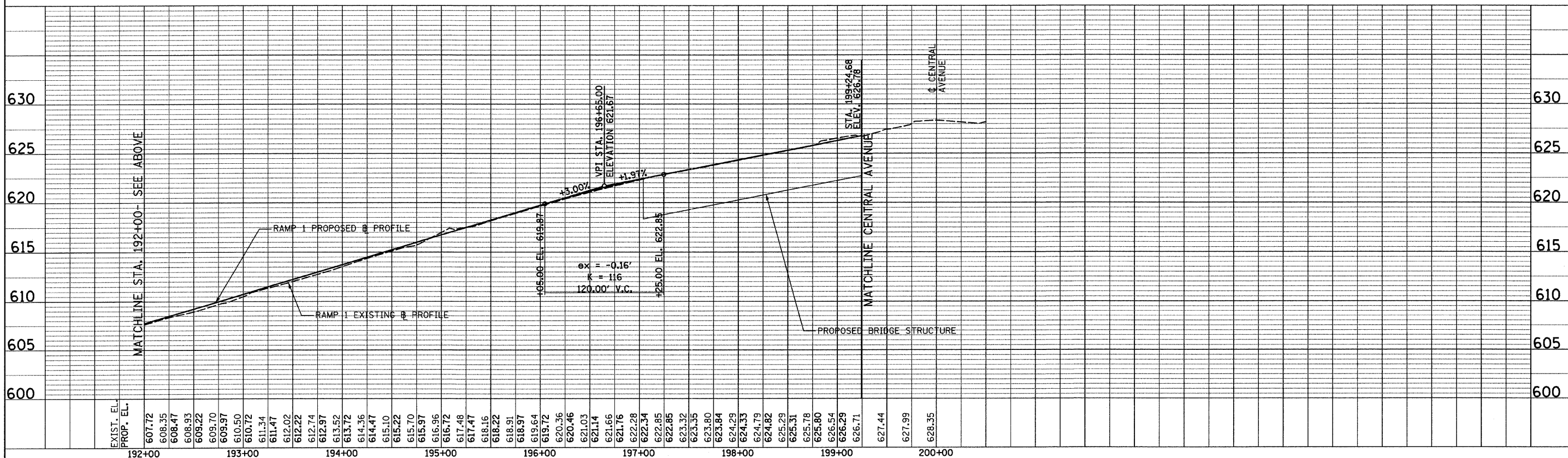
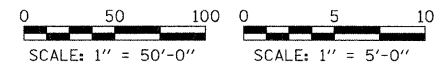
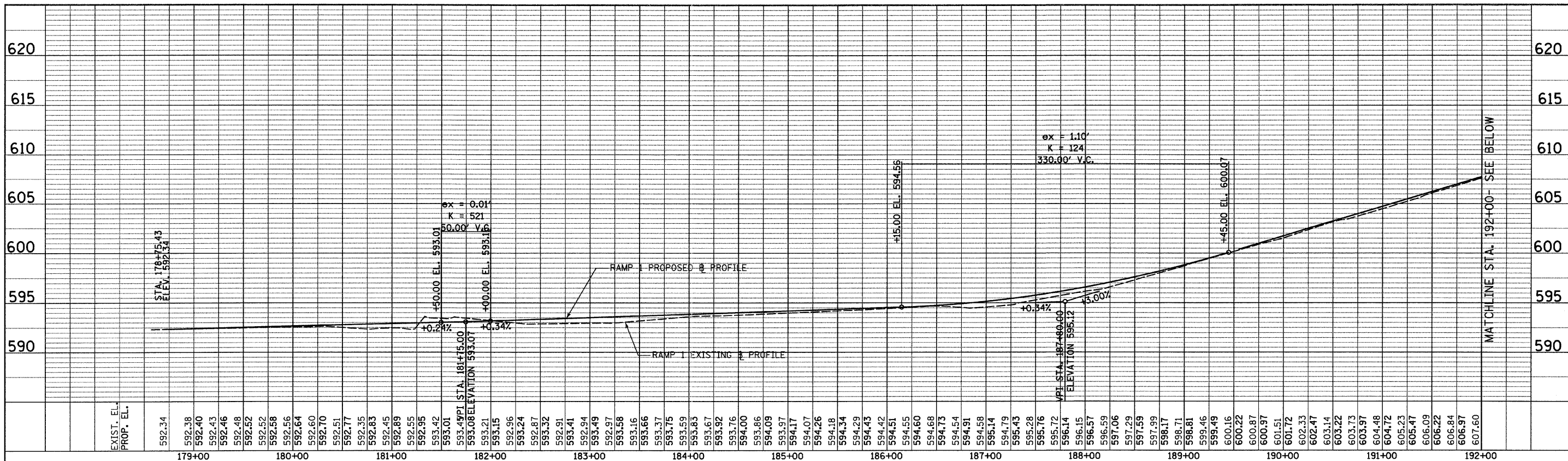


PLAN SURVEYED BY DATE
 CHECKED BY
 NOTE BOOK NO. OF WAY CHECKED
 NO. ROAD FILE NAME

PROFILE SURVEYED BY DATE
 CHECKED BY
 NOTE BOOK NO. NOTED
 NO. STRUCTURE NOTATIONS CIFIED



TYLIN INTERNATIONAL	USER NAME = #USER#	DESIGNED - JPM	REVISED -
	PLOT SCALE = #SCALE#	DRAWN - JPM	REVISED -
	PLOT DATE = 4/28/2011	CHECKED - AZ	REVISED -
		DATE - 03/25/2011	REVISED -

**STATE OF ILLINOIS
 DEPARTMENT OF TRANSPORTATION**

**CENTRAL AVENUE OVER I-55
 ROADWAY PROFILE - RAMP 1**

SCALE: HOR: 1"=50'
 VER: 1"=5'
 SHEET NO. 1 OF 1 SHEETS
 STA. 178+24 TO STA. 200+00

F.A. RTE. 55	SECTION 0711.2R & 1011.1BR	COUNTY COOK	TOTAL SHEETS 741	SHEET NO. 124
CONTRACT NO. 60999				
FED. ROAD DIST. NO. ILLINOIS FED. AID PROJECT				