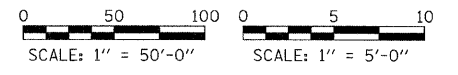
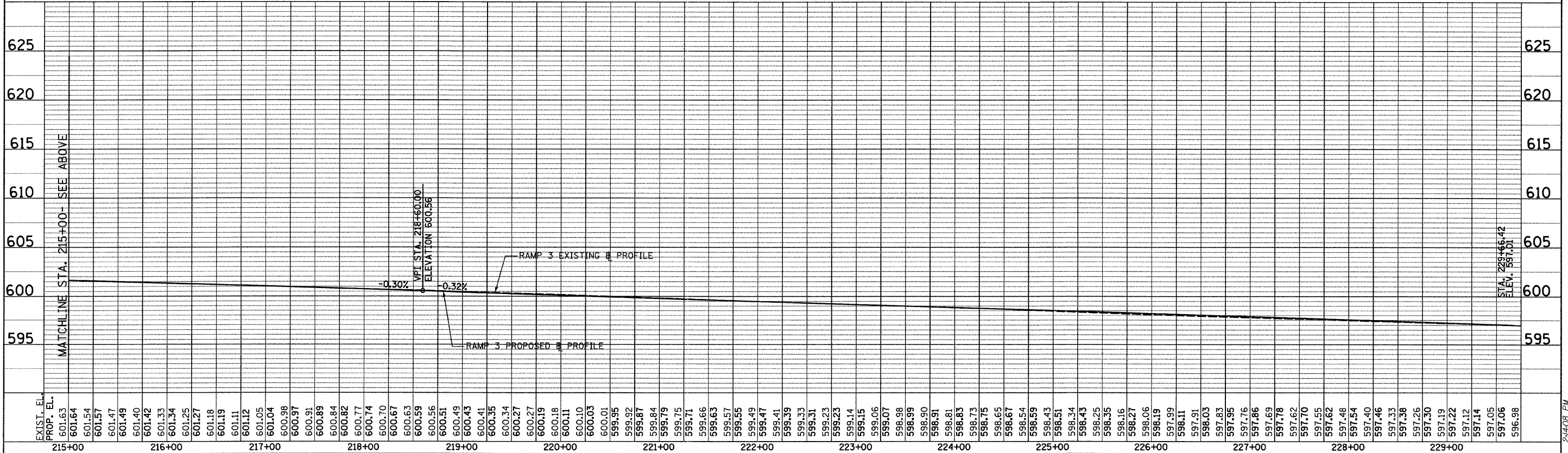
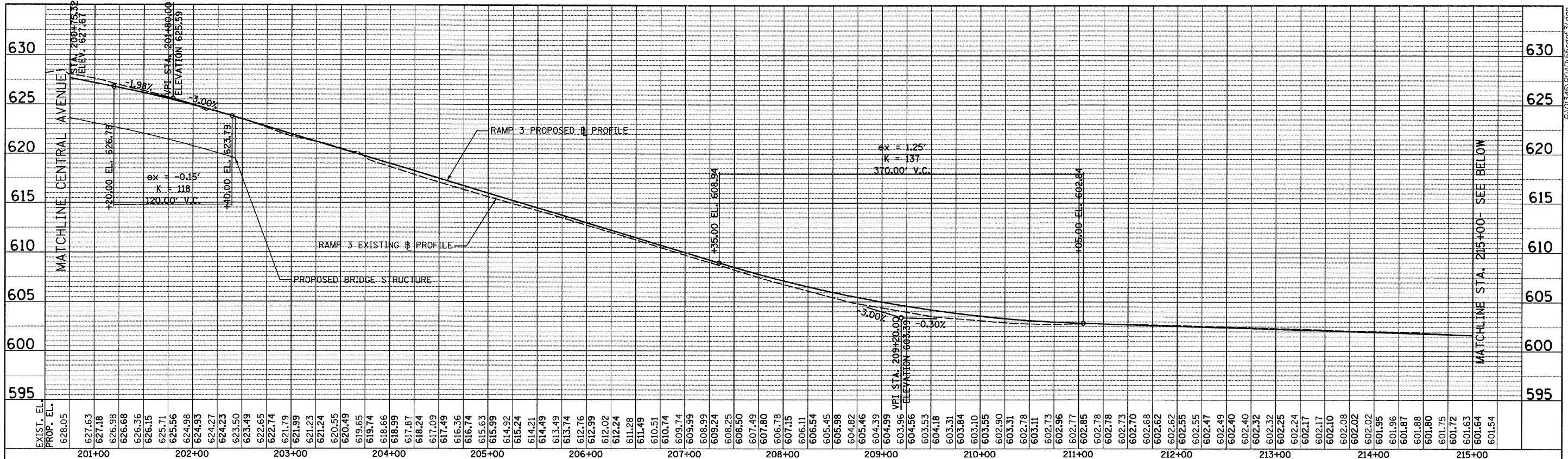


PLAN SURVEYED BY DATE
 ALIGNED BY DATE
 RT. OF WAY CHECKED BY DATE
 PAID FILE NAME NO.

PROFILE SURVEYED BY DATE
 GRADES CHECKED BY DATE
 B.M. NOTED BY DATE
 STRUCTURE NOTATIONS CHECKED BY DATE



TYLIN INTERNATIONAL USER NAME = #USER# PLOT SCALE = #SCALE# PLOT DATE = 4/28/2011	DESIGNED - JPM	REVISED -	STATE OF ILLINOIS DEPARTMENT OF TRANSPORTATION	CENTRAL AVENUE OVER I-55 ROADWAY PROFILE - RAMP 3		F.A. RTE. 55	SECTION 0711.2R & 1011.1BR	COUNTY COOK	TOTAL SHEETS 741	SHEET NO. 127
	DRAWN - JPM	REVISED -		SHEET NO. 1 OF 1 SHEETS	STA. 201+00 TO STA. 230+00	FED. ROAD DIST. NO. [ILLINOIS] FED. AID PROJECT		CONTRACT NO. 60999		
	CHECKED - AZ	REVISED -								
DATE - 03/25/2011	REVISED -									