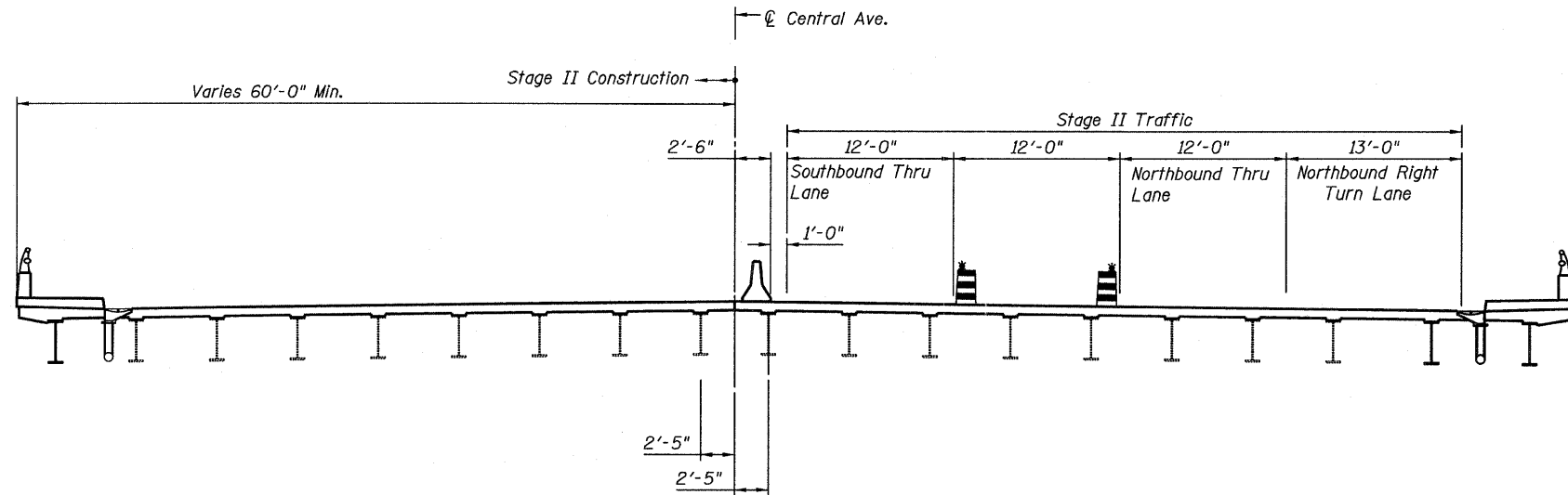
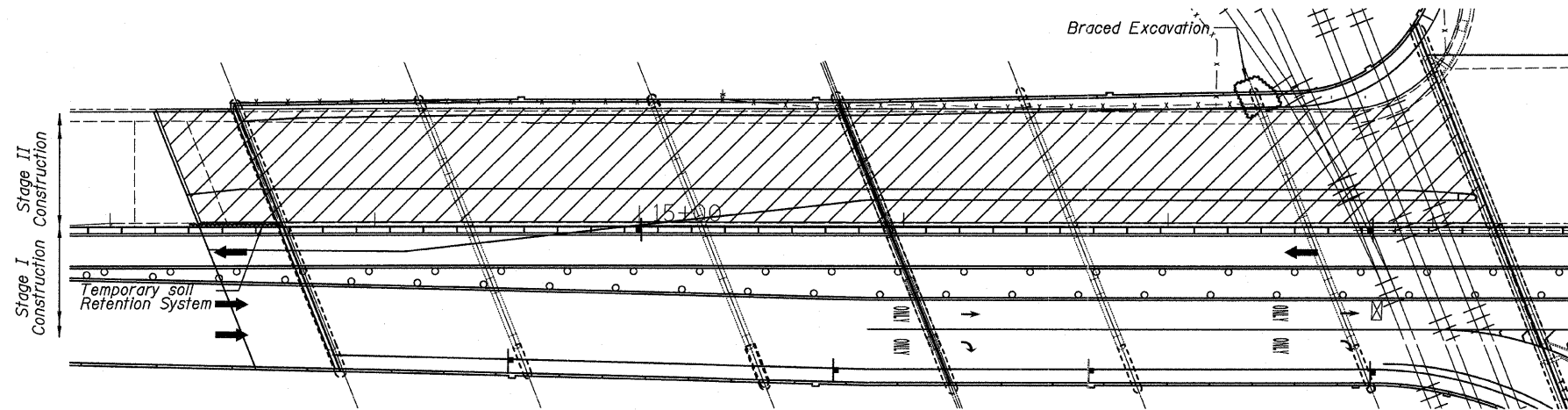


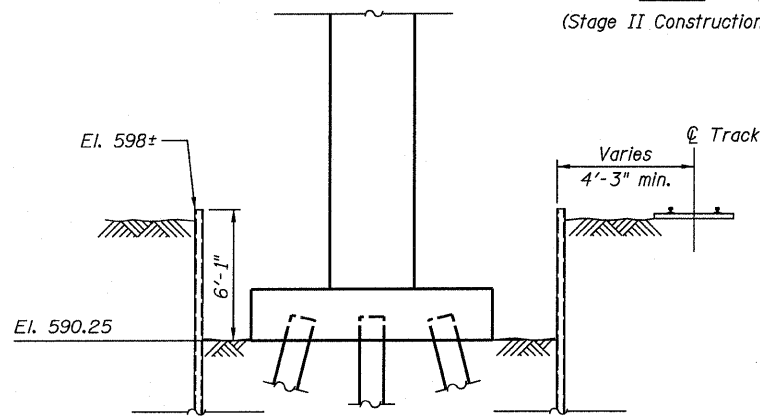
STATE OF ILLINOIS
DEPARTMENT OF TRANSPORTATION



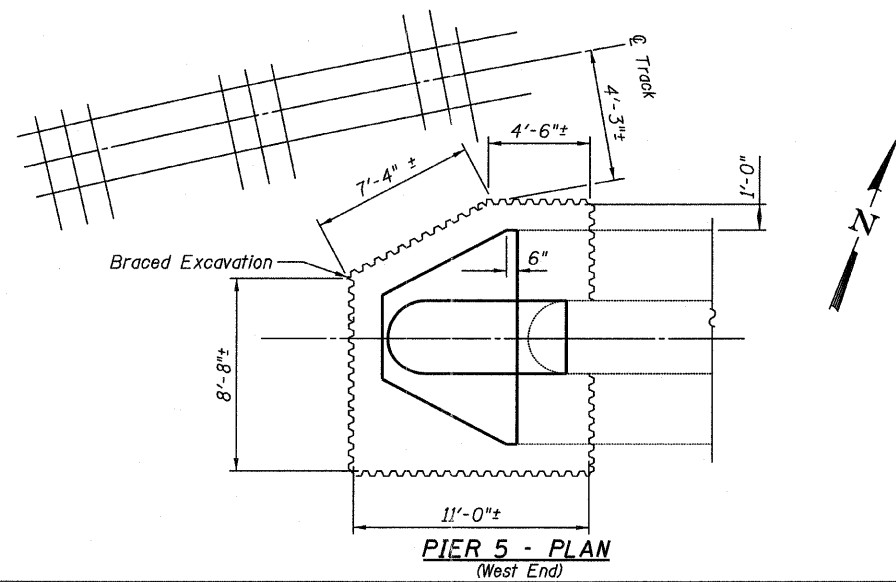
STAGE II CONSTRUCTION
(Looking North Thru Spans 4-6)



PLAN
(Stage II Construction)



PIER 5 - ELEVATION
(Looking West)



PIER 5 - PLAN
(West End)

STAGE II REMOVAL

1. Install temporary concrete barrier as shown and divert traffic to the constructed portion of new bridge.
2. Install Braced Excavation at west end of Pier 5 as shown.
3. Remove Stage II limits of the existing concrete deck.
4. Remove Stage II limits of substructure units as shown on sheet 4. Jack and Crib Stage II existing beams at S. Abutment, Pier 3 and south beams on C. Abut. 1. Paid for as "Jacking Existing Superstructure."
5. Remove and replace existing bearings for Stage II beams on Piers 2 and 4. Removing existing bearings and shoring of beams paid for as "Jack and Remove Existing Bearings."
6. Remove existing end steel diaphragms at the South Abutment, Pier 3 and the south bearings at C. Abut. 1.

STAGE II CONSTRUCTION

1. Construct widened portions of piers 1, 2, 4 and 5.
2. Reconstruct and widen the South Abutment, Pier 3 & C. Abutment 1, within the limits of Stage II.
3. Replace existing expansion bearings on Piers 2 and 4.
4. Paint existing structural steel beams and diaphragms, within the limits of Stage II.
5. Erect new Stage II structural steel.
6. Construct new Stage II bridge deck.

NOTES:

1. See Stage I construction sheet for Temporary Soil Retention and Braced Excavation details.
2. The Contractor shall coordinate the installation of the Braced Excavation with IC/CN Railroad.

LEGEND

Stage II Removal

ITEM	UNIT	TOTAL
Braced Excavation	CU YD	29

STAGE II CONSTRUCTION
STRUCTURE NO. 016-3241

TYLIN INTERNATIONAL	DESIGNED - PK	REVISIONS		SHEET NO. 4	F.A.I RTE. 55	SECTION 0711.2R & 1011.1BR	COUNTY COOK	TOTAL SHEETS 741	SHEET NO. 257
	CHECKED - AMD,	NAME	DATE						
	DRAWN - EMK, PK								
	CHECKED - AMD,								
DATE - 03/25/2011				71 SHEETS	CONTRACT NO. 60999				
					FED. ROAD DIST. NO. 1 ILLINOIS FED. AID PROJECT				