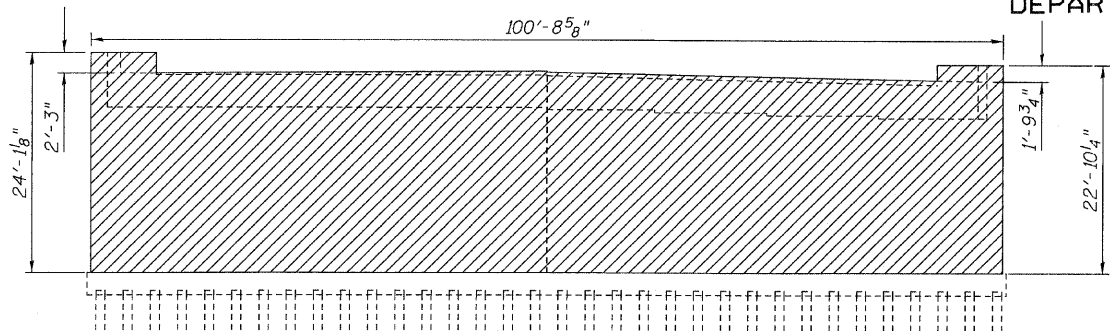
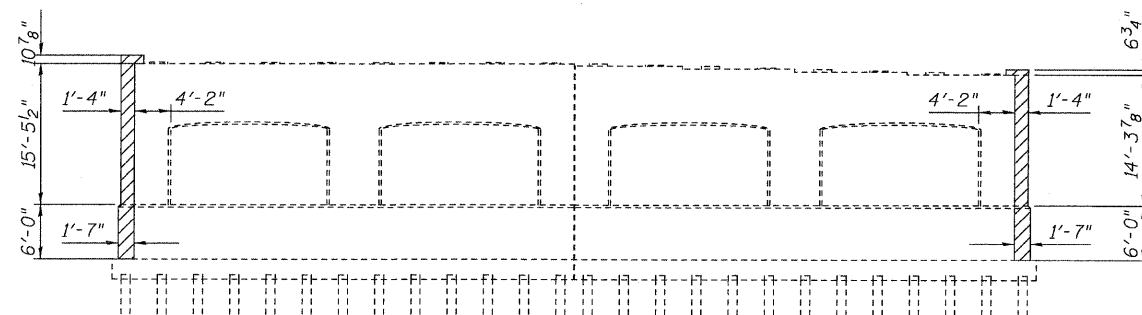


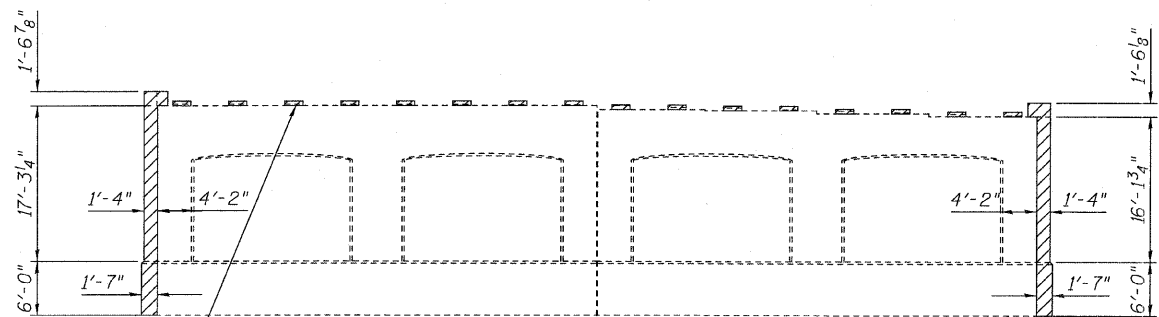
STATE OF ILLINOIS
DEPARTMENT OF TRANSPORTATION



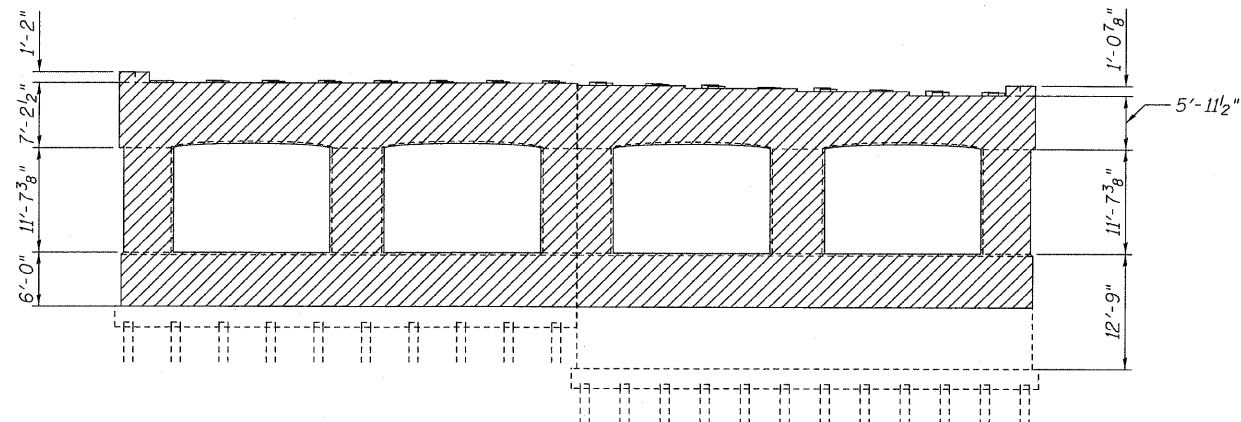
SOUTH ABUTMENT



PIER 1

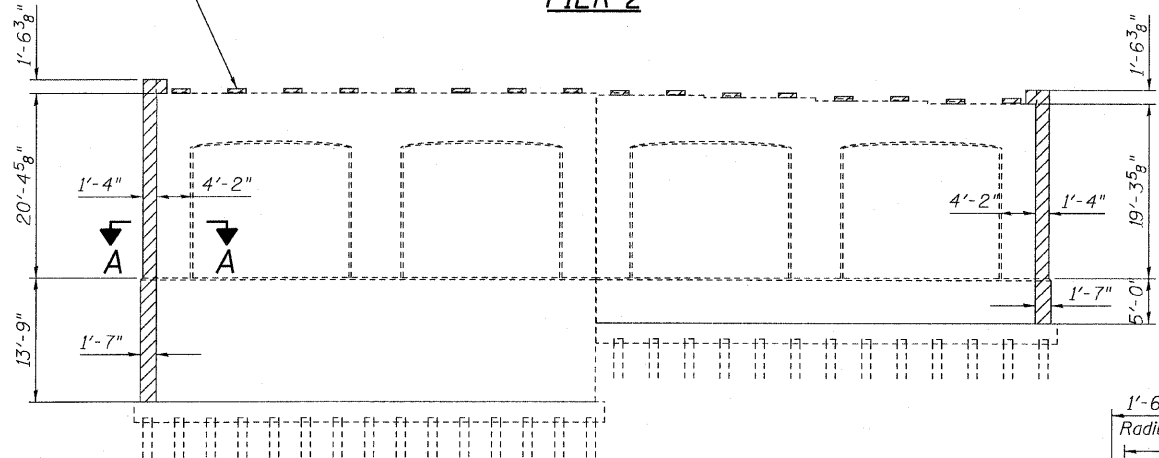


PIER 2

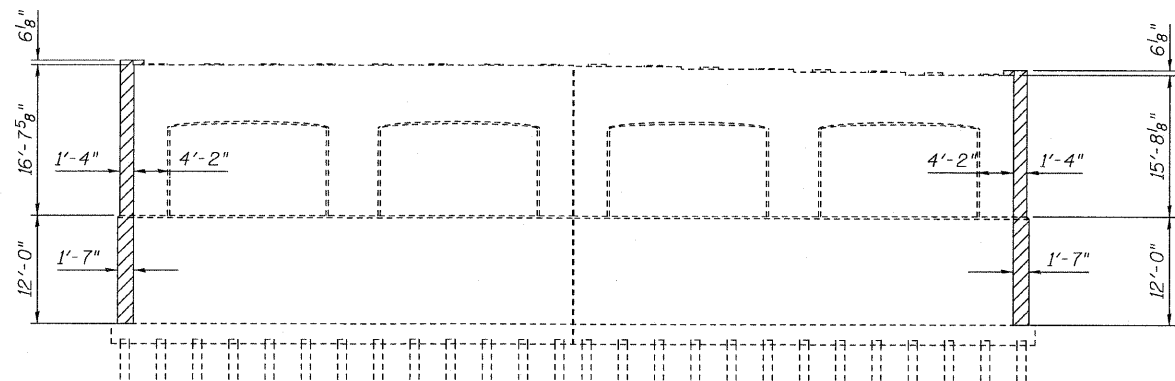


PIER 3

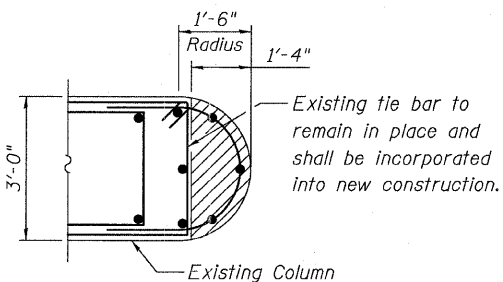
Existing pads above pier cap to be removed, typ. Piers 2 and 4



PIER 4

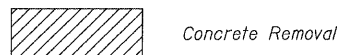


PIER 5



**SECTION A-A
TYPICAL RADIUS REMOVAL**

LEGEND



Concrete Removal

BILL OF MATERIAL

ITEM	UNIT	TOTAL
Concrete Removal	CU YD	469.7

NOTES

For removal limits of C. Abut. 1, see sheet 308.

**REMOVAL PLAN
STRUCTURE NO. 016-3241**

TYLIN INTERNATIONAL	DESIGNED - MAU	REVISIONS		SHEET NO. 6	F.A.I RTE.	SECTION	COUNTY	TOTAL SHEETS	SHEET NO.						
	CHECKED - AMD,	NAME	DATE							71 SHEETS	55	0711.2R & 1011.1BR	COOK	741	259
	DRAWN - MAU														
	CHECKED - AMD,														
	DATE - 03/25/2011				CONTRACT NO. 60999										
					FED. ROAD DIST. NO. 1 ILLINOIS FED. AID PROJECT										