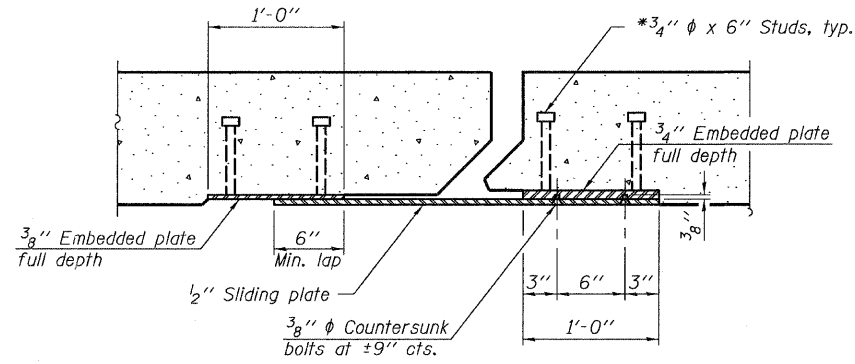
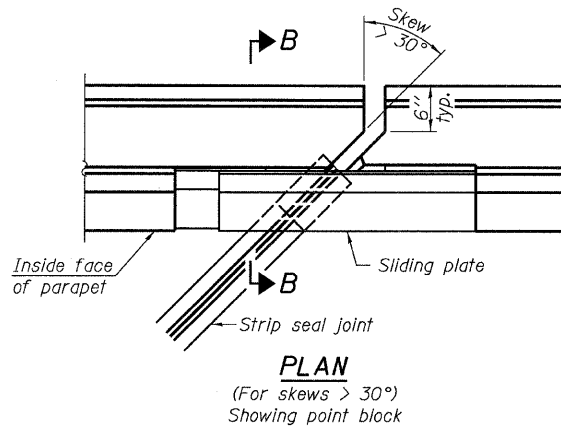
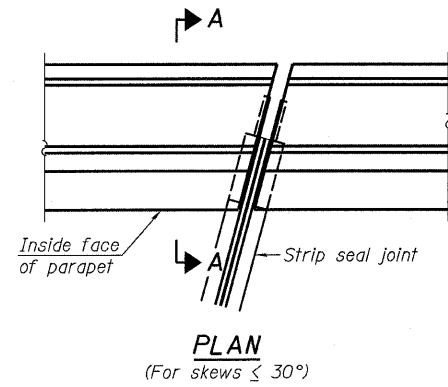
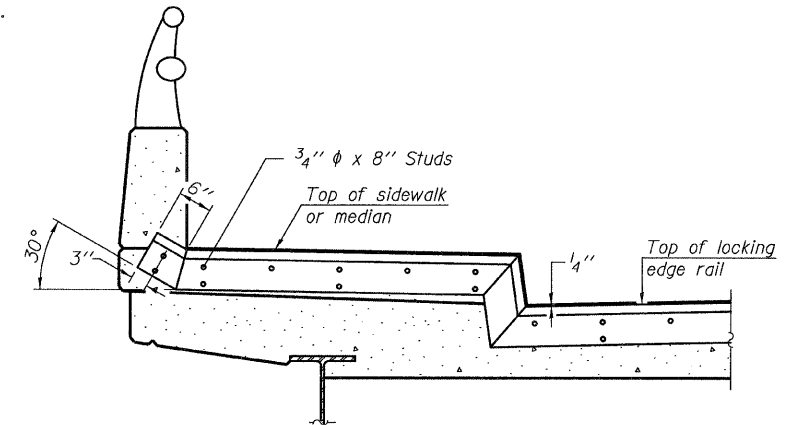


STATE OF ILLINOIS
DEPARTMENT OF TRANSPORTATION

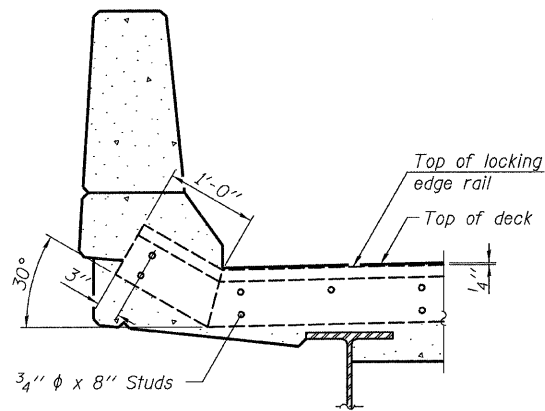


SECTION C-C

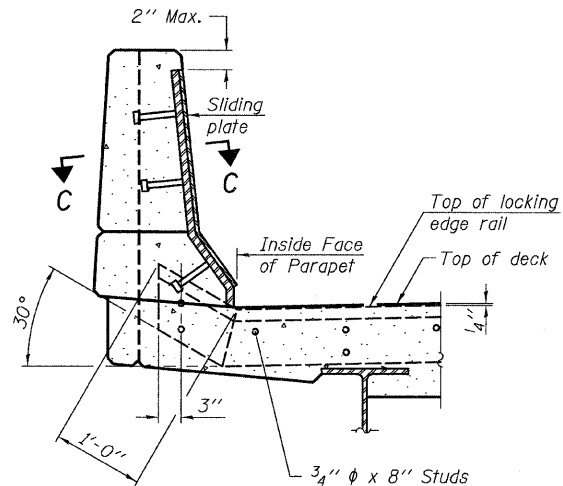


TYPICAL END TREATMENT
AT SIDEWALK OR MEDIAN

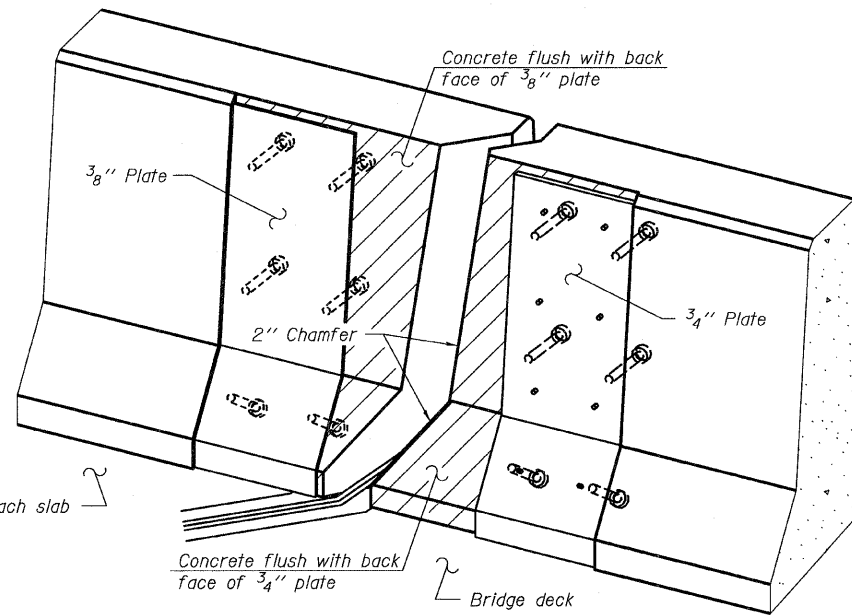
Shorter plates with a single row of studs at 12" cts. may be necessary on medians which are shallower than 9". See manufacturer's recommendation.



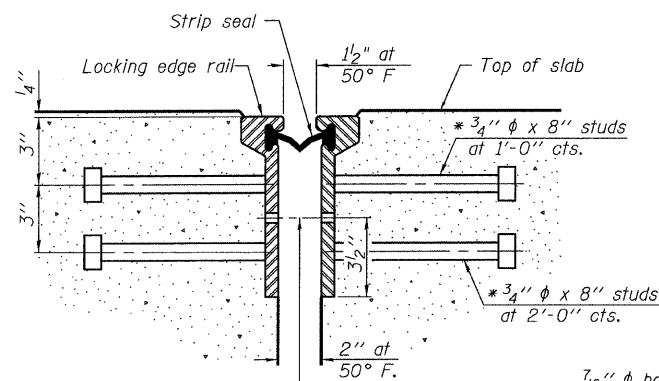
SECTION A-A



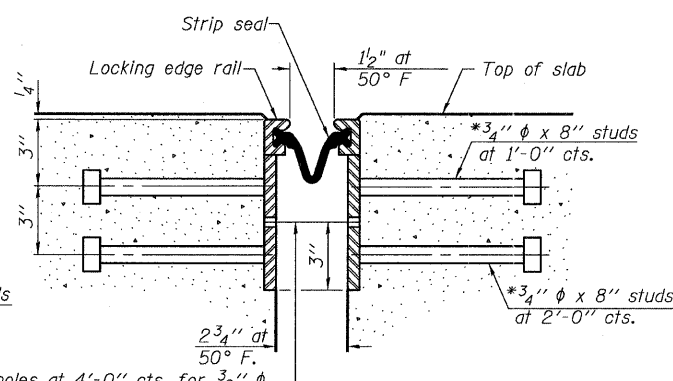
SECTION B-B



TRIMETRIC VIEW
(Showing back plates only)



SECTION THRU
ROLLED RAIL JOINT



SECTION THRU
WELDED RAIL JOINT

7/16" ϕ holes at 4'-0" cts. for 3/8" ϕ bolts. All bolts shall be burned, sawed, or chipped off flush with the plates after forms are removed, typ.

7/16" ϕ holes at 4'-0" cts. for 3/8" ϕ bolts. All bolts shall be burned, sawed, or chipped off flush with the plates after forms are removed, typ.

ROLLED
EXTRUDED RAIL WELDED RAIL

LOCKING EDGE RAILS

LOCKING EDGE
RAIL SPLICE

The inside of the locking edge rail groove shall be free of weld residue.
Rolled rail shown, welded rail similar.

*** Back gouge not required if complete joint penetration is verified by mock-up.

BILL OF MATERIAL

Item	Unit	Total
Preformed Joint Strip Seal	Foot	110

PREFORMED JOINT STRIP SEAL
STRUCTURE NO. 016-3241

EJ-SSJ 7-1-10

* Granular or solid flux filled headed studs conforming to Article 1006.32 of the Std. Specs., automatically end welded.

TYLIN INTERNATIONAL	DESIGNED -	REVISIONS	
	CHECKED - JMA	NAME	DATE
	DRAWN -		
	CHECKED - AMD,		
	DATE - 03/25/2011		

SHEET NO. 26	F.A.I. RTE.	SECTION	COUNTY	TOTAL SHEETS	SHEET NO.
	71 SHEETS	55	0711.2R & 1011.1BR	COOK	741 279
			CONTRACT NO. 60999		
FED. ROAD DIST. NO. 1			ILLINOIS	FED. AID PROJECT	