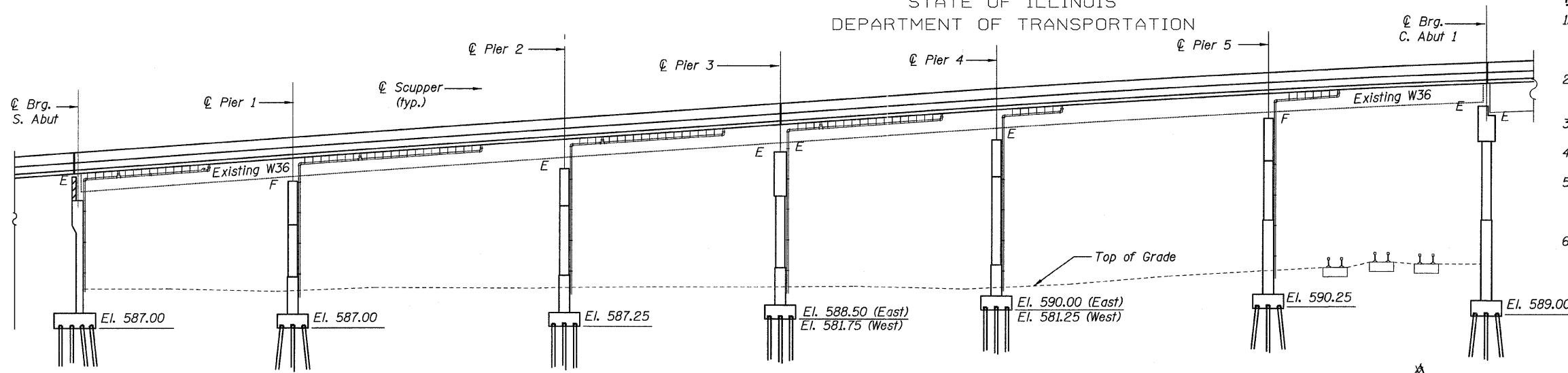
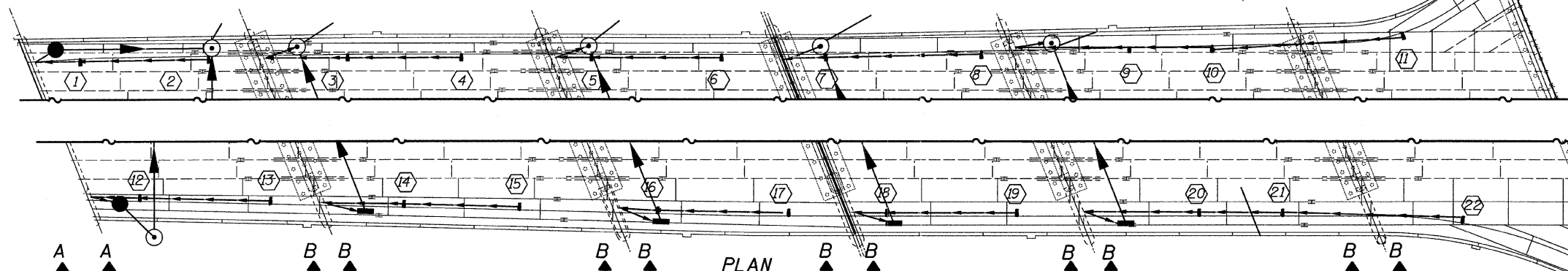


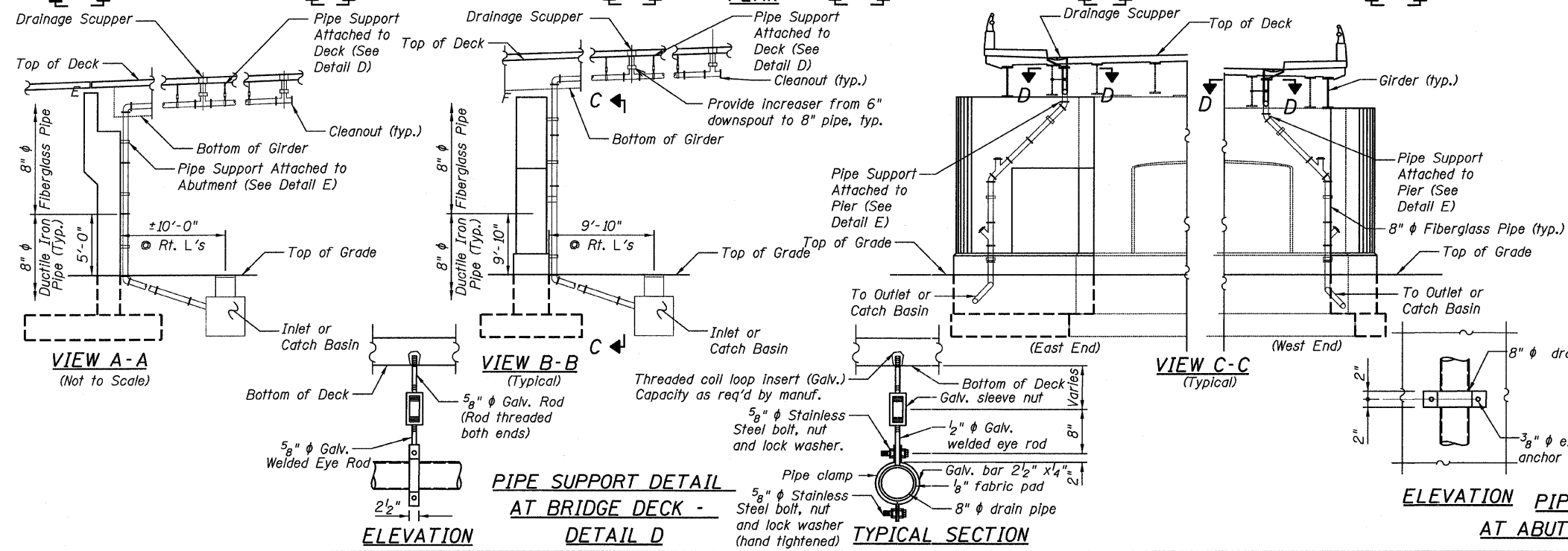
STATE OF ILLINOIS
DEPARTMENT OF TRANSPORTATION



ELEVATION



PLAN



ELEVATION

PIPE SUPPORT DETAIL AT BRIDGE DECK - DETAIL D

TYPICAL SECTION

ELEVATION PIPE SUPPORT DETAIL AT ABUTMENT & PIER - DETAIL E

- NOTES:**
- The cost of the ductile iron pipe, connection to proposed catch basin, trenching and backfilling shall be included in Drainage System.
 - All pipe supports and hardware shall be hot dipped galvanized. See Special Provisions.
 - See Special Provisions for additional information.
 - Contractor to provide shop drawings for Drainage System.
 - The Pipe Support Detail at the Abutment shall be such as to provide for a total movement based on thermal expansion of 1".
 - The cost for the removal of the existing drainage system is included with the cost of "Removal of Existing Concrete Deck."

SCUPPER LOCATION TABLE

Scupper No.	Type	Station	Offset	Lt/Rt
1	DS-12	13+65.47	40.74	Lt
2	DS-12	14+04.31	41.47	Lt
3	DS-12	14+46.36	41.97	Lt
4	DS-12	14+80.73	42.00	Lt
5	DS-12	15+20.10	42.00	Lt
6	DS-12	15+59.47	42.00	Lt
7	DS-12	15+91.04	42.06	Lt
8	DS-12	16+38.03	42.76	Lt
9	DS-12	16+82.79	44.07	Lt
10	DS-12	17+07.78	44.62	Lt
11	DS-12	17+65.28	48.49	Lt
12	DS-12	14+01.24	49.38	Rt
13	DS-12	14+40.77	50.36	Rt
14	DS-12	14+81.13	51.37	Rt
15	DS-12	15+16.06	52.25	Rt
16	DS-12	15+57.94	53.29	Rt
17	DS-12	15+97.59	54.00	Rt
18	DS-12	16+27.24	54.00	Rt
19	DS-12	16+66.61	54.00	Rt
20	DS-12	17+21.72	54.00	Rt
21	DS-12	17+46.93	54.00	Rt
22	DS-12	18+01.30	56.17	Rt
**23	DS-11	16+07.34	10.00	Rt
**24	DS-11	17+09.47	10.00	Rt

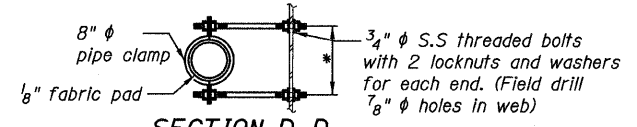
Offsets are measured from the ± of Central Ave. to the intersection of the ± of scupper with face of curb.

*Offset is to edge of scuppers placed 4" from face of curb.

** At center median.

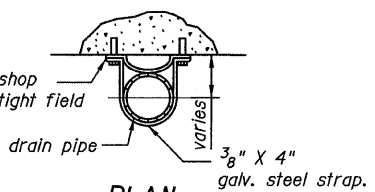
BILL OF MATERIAL

ITEM	UNIT	TOTAL
Drainage System	L SUM	0.18



SECTION D-D

* Dimension as required by pipe clamp



PLAN

DRAINAGE SYSTEM STRUCTURE NO. 016-3241

TYLIN INTERNATIONAL DESIGNED - MAU CHECKED - AMD, MMB DRAWN - MAU CHECKED - AMD, MMB DATE - 03/25/2011	REVISIONS	
	NAME	DATE

SHEET NO. 28	F.A.I. RTE.	SECTION	COUNTY	TOTAL SHEETS	SHEET NO.
	55	0711.2R & 1011.1BR	COOK	741	281
71 SHEETS	CONTRACT NO. 60999			FED. ROAD DIST. NO. 1 ILLINOIS FED. AID PROJECT	

11:30:02 AM
pi:01345\structure\01_South Approach_016-3241\15501drain.dgn
4/28/2011 11:30:02 AM