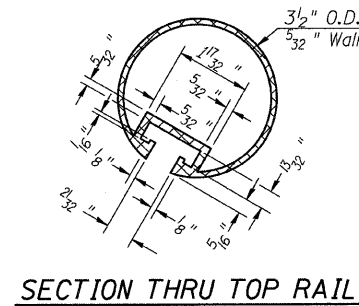


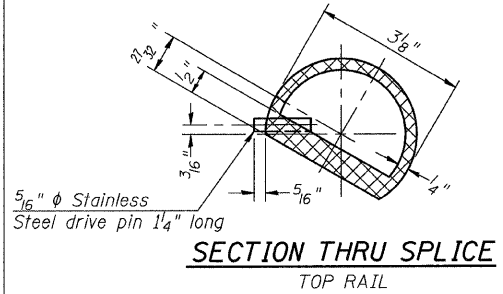
STATE OF ILLINOIS
DEPARTMENT OF TRANSPORTATION

NOTES:

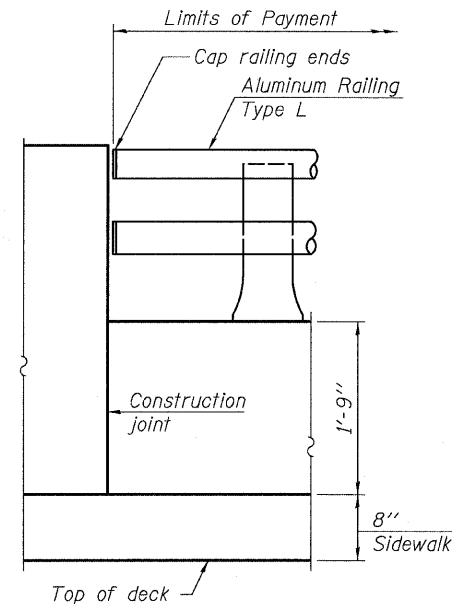
1. All Posts shall be normal to parapet.
2. All joints in rail shall be spliced per detail.
3. All exposed rail ends shall be capped per detail.
4. Provide 1-1/8" and 2-1/16" Aluminum Shims for 25% of the Posts. Rail elements shall be parallel to Grade-high spots will be ground and low spots shimmed.
5. See sheet 21 for rail post spacing.



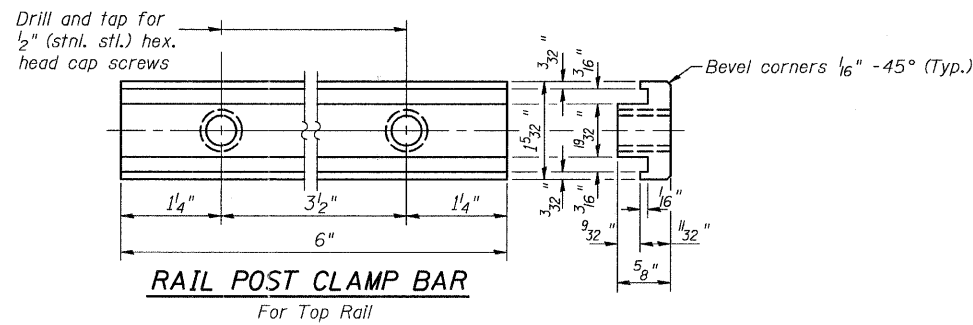
SECTION THRU TOP RAIL



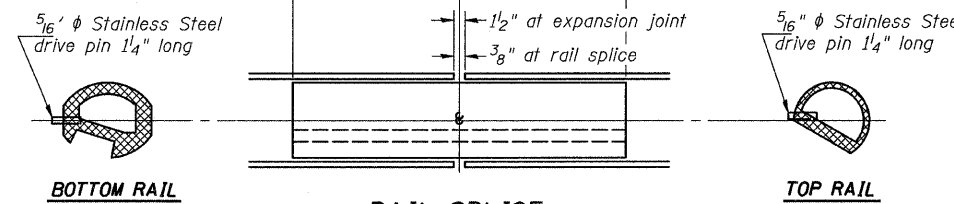
SECTION THRU SPLICE
TOP RAIL



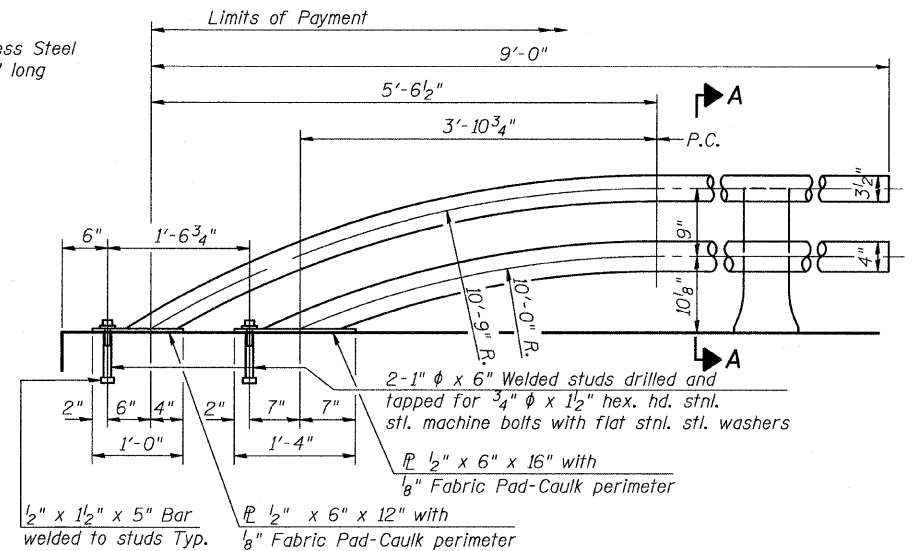
RAIL END TREATMENT FOR
TYPE 5 AND 6 TERMINAL



RAIL POST CLAMP BAR
For Top Rail

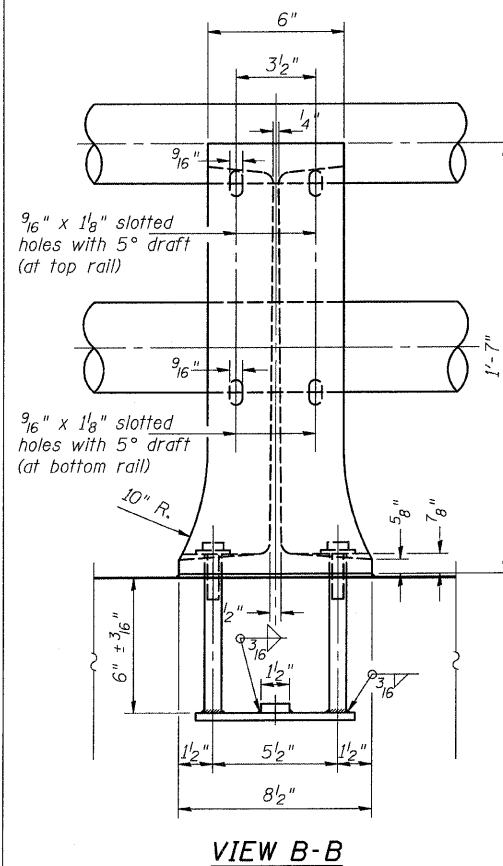


RAIL SPLICE

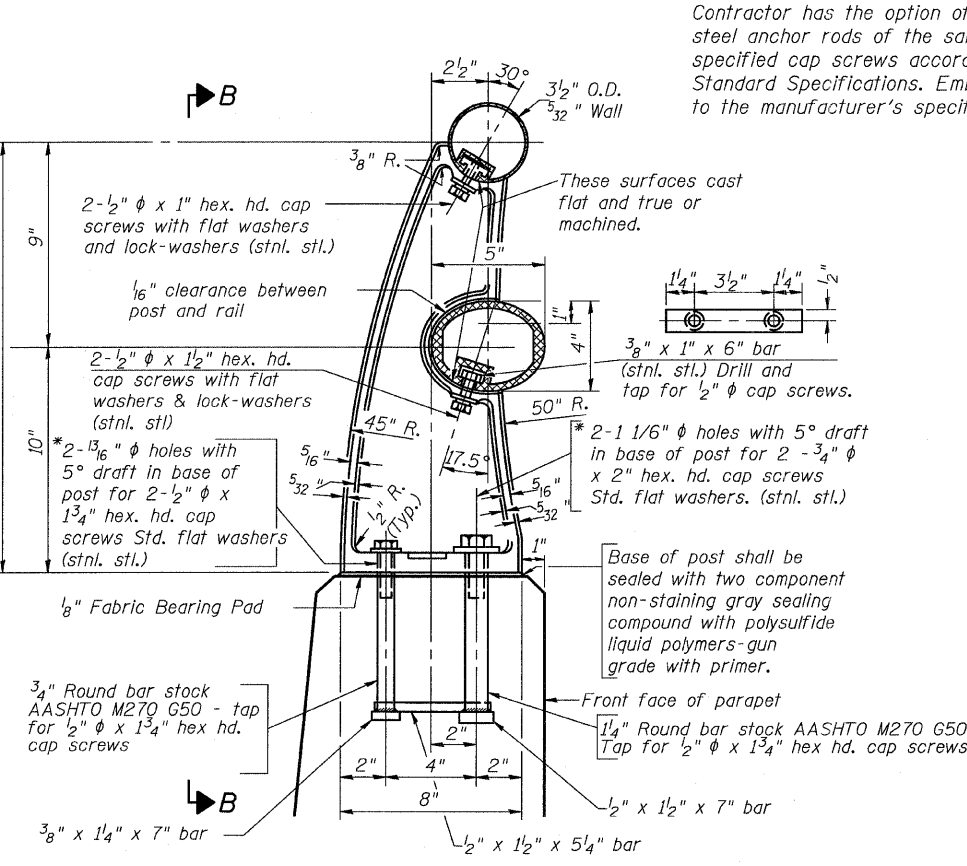


RAIL TERMINAL SECTION

NOTE: The end rail post shall be set back as required for the terminal rail section.



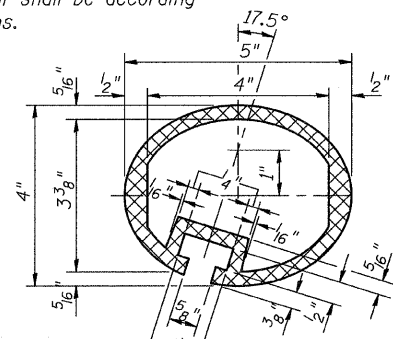
VIEW B-B



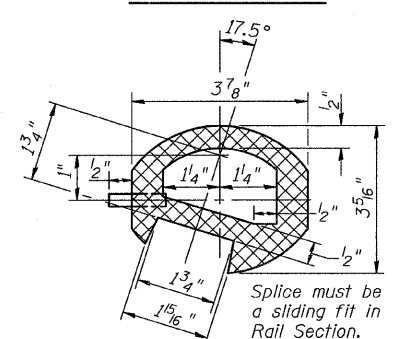
RAIL POST DETAILS

SECTION A-A

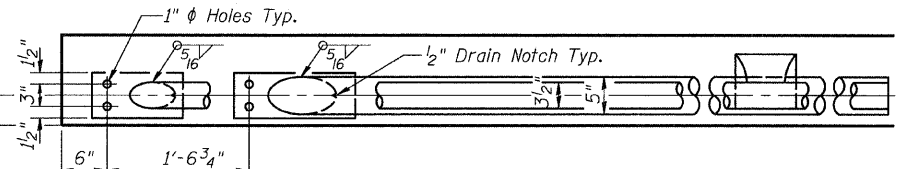
* In lieu of the cast-in-place anchor device shown, the Contractor has the option of drilling and setting stainless steel anchor rods of the same diameter and grade as the specified cap screws according to Article 509.06 of the Standard Specifications. Embedment shall be according to the manufacturer's specifications.



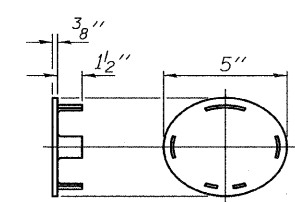
SEC. THRU ELLIPTICAL
RAIL SECTION



SEC. THRU SPLICE



CAST END CAP
For top rail



CAST END CAP
For bottom rail
DRIVE FIT TYPE

BILL OF MATERIAL

ITEM	UNIT	QTY
Aluminum Railing, Type L	FOOT	971.4

ALUMINUM RAILING, TYPE L
STRUCTURE NO. 016-3241

TYLIN INTERNATIONAL

DESIGNED -	REVISIONS
CHECKED - AMD,	NAME
DRAWN -	DATE
CHECKED - AMD,	
DATE - 03/25/2011	

SHEET NO. 30	F.A.I. RTE.	SECTION	COUNTY	TOTAL SHEETS	SHEET NO.
	55	0711.2R & 1011.1BR	COOK	741	283
71 SHEETS	CONTRACT NO. 60999				
FED. ROAD DIST. NO. 1 ILLINOIS FED. AID PROJECT					

4/28/2011 11:30:05 AM