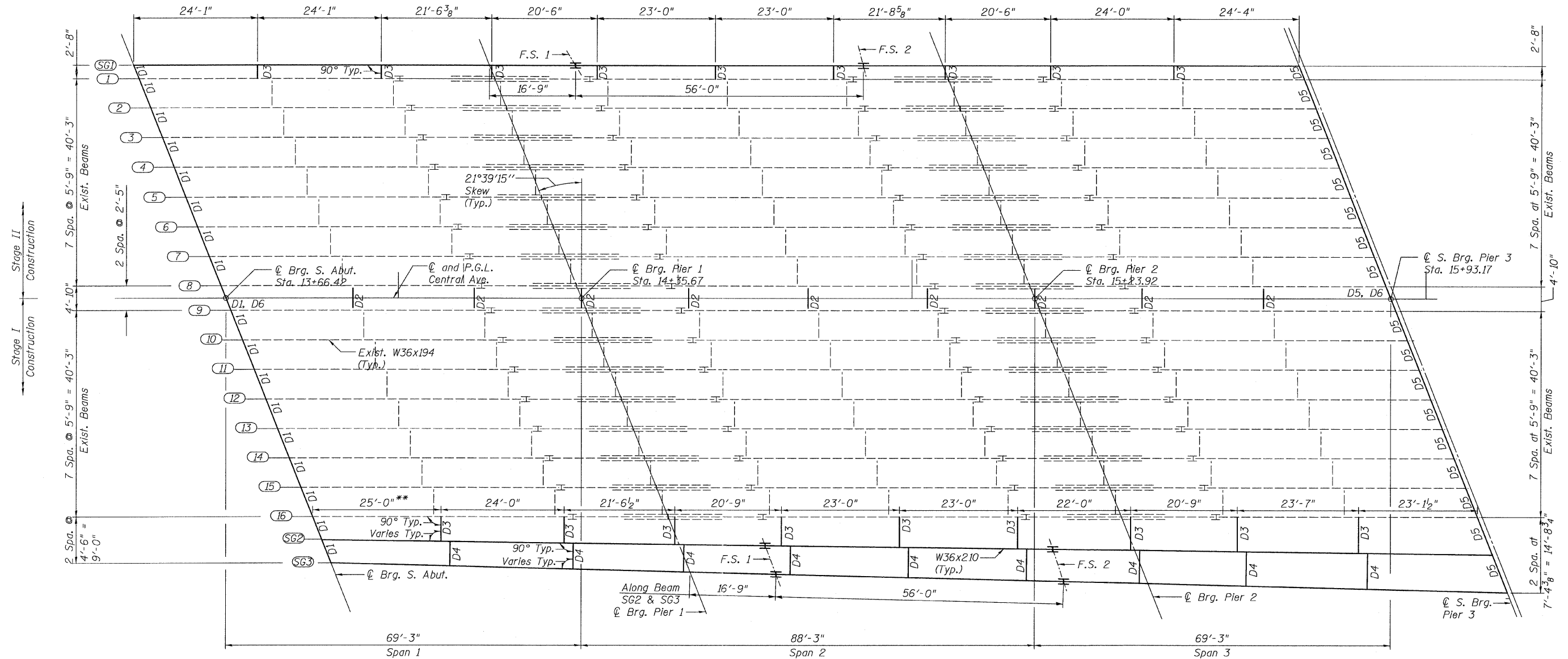
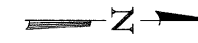


STATE OF ILLINOIS  
DEPARTMENT OF TRANSPORTATION



**FRAMING PLAN**

**TOP OF FLANGE ELEVATIONS - SPANS 1,2,3\***

Girder	℄ Brg. S. Abut.	℄ Pier 1	Field Splice 1	Field Splice 2	℄ Pier 2	℄ S. Brg. Pier 3
SG1	610.87	613.21	613.78	615.74	616.30	618.81
SG2	612.12	614.45	615.00	616.95	617.54	620.04
SG3	612.09	614.42	614.95	616.89	617.50	619.99

\* For fabrication use only

\*\* Diaphragm Spacing shown is along the ℄ of Beam 16 and SG2.

**NOTES:**

1. For General Notes, see Sheet 2.
2. F.S. - denotes girder Field Splice.
3. For Diaphragm details, see Sheet 38.
4. For Field Splice Details, see Sheet 41.
5. F.P. - denotes Framing Point.
6. Structural Steel for beams, splices, diaphragms marked "FB" and associated connection plates shall conform to the requirements of AASHTO M270 Grade 50.
7. All diaphragms shall be installed as steel is erected and secured with erection pins and bolts. Individual diaphragms at supports may be temporarily disconnected to install bearing anchor rods.
8. New structural steel members are furnished under a separate contract.

**FRAMING PLAN -  
SPANS 1, 2 & 3  
STRUCTURE NO. 016-3241**

<b>TYLIN INTERNATIONAL</b>	DESIGNED - SP	REVISIONS		SHEET NO. 31	F.A.I. RTE.	SECTION	COUNTY	TOTAL SHEETS	SHEET NO.	
	CHECKED - AMD,	NAME	DATE		55	0711.2R & 1011.1BR	COOK	741	284	
	DRAWN - SP				CONTRACT NO. 60999					
	CHECKED - AMD,				FED. ROAD DIST. NO. 1 ILLINOIS FED. AID PROJECT					
	DATE - 03/25/2011			71 SHEETS						

pi:\01345\structure\016-3241\5501Frameplan1.dgn 4/28/2011 11:30:07 AM