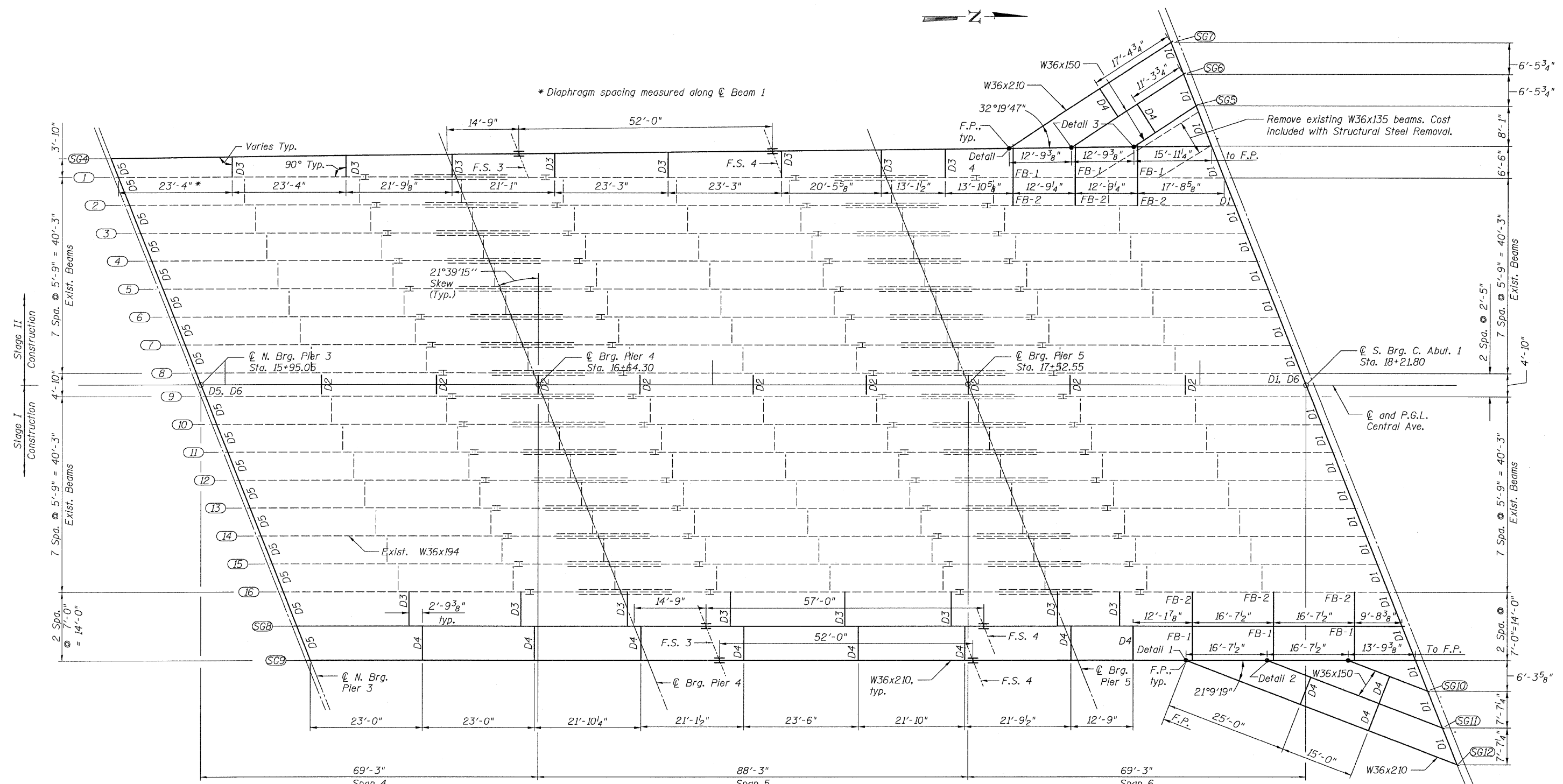
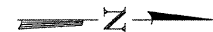


STATE OF ILLINOIS
DEPARTMENT OF TRANSPORTATION



TOP OF FLANGE ELEVATIONS - SPANS 4,5,6**

FRAMING PLAN

NOTES:

- For General Notes, see Sheet 2.
- For Details 1-4, see Sheets 39 & 40.
- F.P. denotes Framing Point
- F.S. denotes girder Field Splice.
- For Diaphragm details, see Sheet 38.
- For Field Splice Details, see Sheet 41.
- Structural Steel for beams, splices, diaphragms, marked "FB" and associated connection plates shall conform to the requirements of AASHTO M270 Grade 50.
- All diaphragms shall be installed as steel is erected and secured with erection pins and bolts. Individual diaphragms at supports may be temporarily disconnected to install bearing anchor rods.
- New structural steel members are furnished under a separate contract.

Girder	ϕ N. Brg. Pier 3	ϕ Pier 4	Field Splice 3	Field Splice 4	ϕ Pier 5	ϕ S. Brg. C. Abut. 1
SG4	618.83	621.11	621.60	623.20	623.75	625.58
SG8	620.11	622.30	622.76	624.35	624.74	626.37
SG9	620.06	622.24	622.71	624.28	624.66	626.29

Girder	F.P.	ϕ S. Brg. C. Abut. 1
SG5	625.13	625.35
SG6	624.78	625.16
SG7	624.42	624.98

Girder	F.P.	ϕ S. Brg. C. Abut. 1
SG10	625.91	626.20
SG11	625.53	626.11
SG12	625.14	626.01

** For fabrication use only

FRAMING PLAN - SPANS 4, 5 & 6
STRUCTURE NO. 016-3241

TYLIN INTERNATIONAL

DESIGNED - PK	REVISIONS	
CHECKED - AMD,	NAME	DATE
DRAWN - PK		
CHECKED - AMD,		
DATE - 03/25/2011		

SHEET NO. 32	F.A.I. RTE.	SECTION	COUNTY	TOTAL SHEETS	SHEET NO.
	71 SHEETS	55	0711.2R & 1011.1BR	COOK	741 285
			CONTRACT NO. 60999		
			FED. ROAD DIST. NO. 1 ILLINOIS FED. AID PROJECT		

4/28/2011 11:30:08 AM