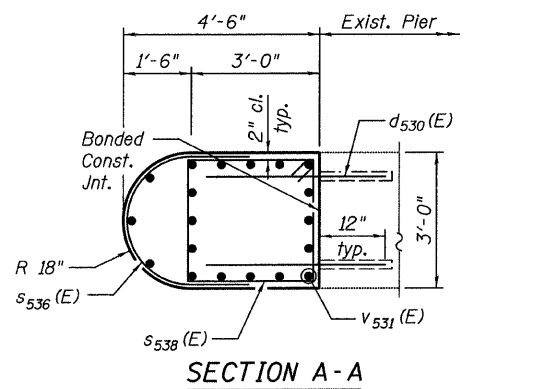
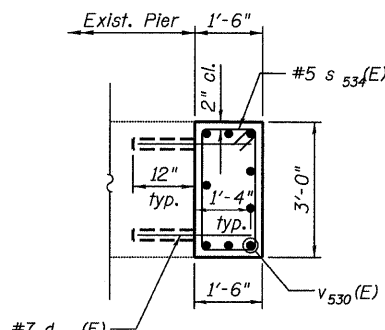


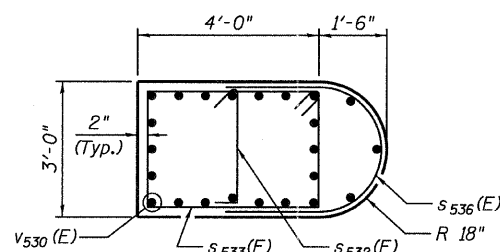
STATE OF ILLINOIS  
DEPARTMENT OF TRANSPORTATION



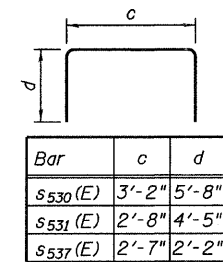
SECTION A-A



SECTION B-B

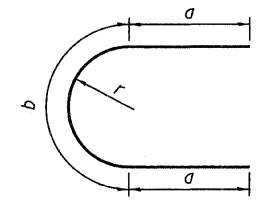


SECTION C-C



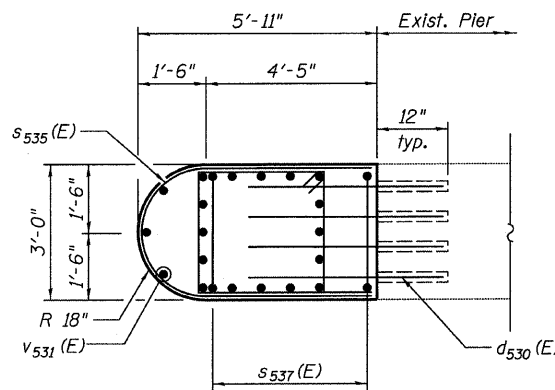
BARS s530(E), s531(E)  
& s537(E)

Bar	c	d
s530(E)	3'-2"	5'-8"
s531(E)	2'-8"	4'-5"
s537(E)	2'-7"	2'-2"

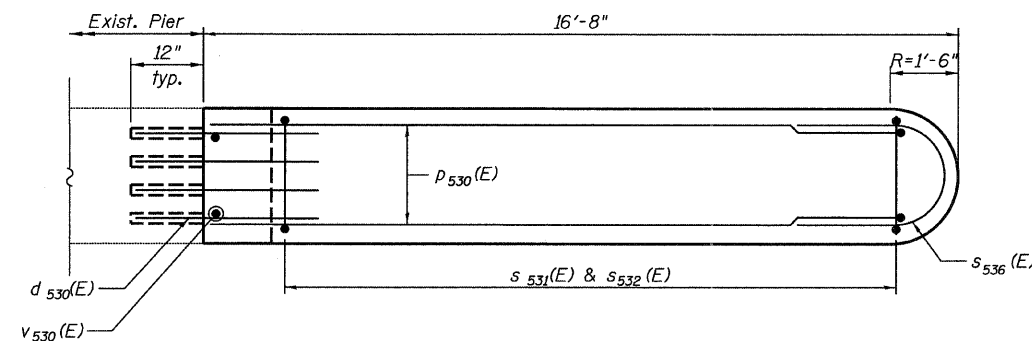


Bar	a	b	r
s535(E)	4'-3"	3'-11"	1'-3"
s536(E)	2'-2"	3'-11"	1'-3"
u530(E)	2'-2"	4'-9"	1'-6"

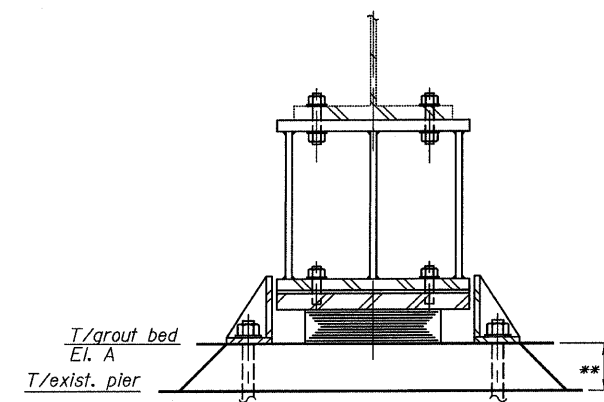
BARS s535(E), s536(E) & u530(E)



WEST EXTENSION-PLAN



EAST EXTENSION-PLAN



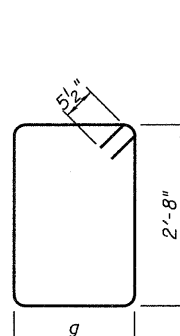
\*\* Provide non-shrink grout at locations indicated in accordance with section 1024 of the Standard Specifications.

The strength of the grout shall not be less than 6000 psi at the age of 28 days.

The grout will not be paid separately but shall be included in "Concrete Structures".

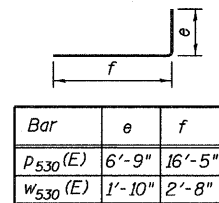
PROPOSED BEAM BEARING DETAIL  
AT EXISTING BEAMS

Existing Girder	El. A	Approx. Top of Existing Pier El.
16	612.929	612.773
15	612.921	612.773
14	612.913	612.773
13	612.905	612.773
12	612.897	612.773
11	612.889	612.773
10	612.881	612.773
9	612.873	612.773
8	612.806	612.554
7	612.654	612.554
6	612.503	612.251
5	612.351	612.251
4	612.199	611.947
3	612.047	611.947
2	611.895	611.644
1	611.744	611.644



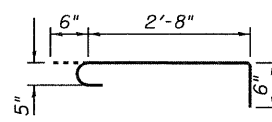
Bar	g
s533(E)	3'-8"
s534(E)	1'-3"
s538(E)	2'-8"

BARS s533(E), s534(E)  
& s538(E)

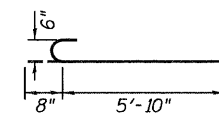


Bar	e	f
p530(E)	6'-9"	16'-5"
w530(E)	1'-10"	2'-8"

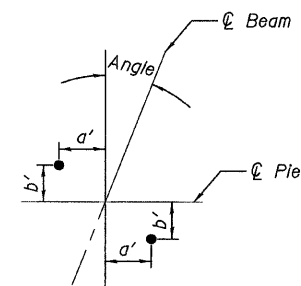
BARS p530(E) & w530(E)



BAR s532(E)



BAR n531(E)



Beam	Angle	a'	b'
SG1	21°39'15"	12 <sup>3</sup> / <sub>8</sub> "	4 <sup>7</sup> / <sub>8</sub> "
1 thru 16	21°39'15"	12 <sup>3</sup> / <sub>8</sub> "	4 <sup>7</sup> / <sub>8</sub> "
SG2	22°22'28"	12 <sup>1</sup> / <sub>4</sub> "	5"
SG3	23°05'11"	12 <sup>1</sup> / <sub>4</sub> "	5 <sup>1</sup> / <sub>4</sub> "

BILL OF MATERIAL

Bar	No.	Size	Length	Shape
d530(E)	116	#7	4'-1"	—
d531(E)	22	#7	2'-4"	—
*h530(E)	4	#8	16'-8"	—
h531(E)	22	#5	15'-0"	—
n530(E)	51	#9	10'-8"	—
n531(E)	10	#6	6'-6"	—
*p530(E)	5	#8	23'-3"	—
*p531(E)	10	#8	16'-5"	—
s530(E)	48	#6	14'-6"	□
s531(E)	58	#5	11'-6"	□
s532(E)	47	#5	3'-8"	—
s533(E)	18	#5	13'-7"	—
s534(E)	11	#5	8'-9"	□
s535(E)	4	#5	12'-5"	—
s536(E)	40	#5	8'-3"	—
s537(E)	5	#5	6'-11"	—
s538(E)	18	#5	11'-7"	□
t530(E)	20	#5	9'-8"	—
t531(E)	24	#8	9'-8"	—
u530(E)	12	#5	9'-1"	—
v530(E)	32	#9	15'-3"	—
v531(E)	19	#9	17'-0"	—
w530(E)	20	#5	4'-6"	—
w531(E)	20	#5	14'-7"	—
Structure Excavation	Cu Yd		75	
Concrete Structures	Cu Yd		61.1	
Reinforcement Bars, Epoxy Coated	Pound		11,210	
Furnishing Metal Shell Piles 12"x0.25"	Foot		385	
Driving Piles	Foot		385	
Test Pile Metal Shells	Each		1	

\* Cut to fit in field.

NOTES

1. Work this sheet with Sheet 53.

PIER 2 DETAILS  
STRUCTURE NO. 016-3241

TYLIN INTERNATIONAL	DESIGNED - MMB	REVISIONS		SHEET NO. 54	F.A.I. RTE.	SECTION	COUNTY	TOTAL SHEETS	SHEET NO.	
	CHECKED - AMD,	NAME	DATE		71 SHEETS	55	0711.2R & 1011.1BR	COOK	741	307
	DRAWN - MMB				CONTRACT NO. 60999					
	CHECKED - AMD,				FED. ROAD DIST. NO. 1 ILLINOIS FED. AID PROJECT					
	DATE - 03/25/2011									