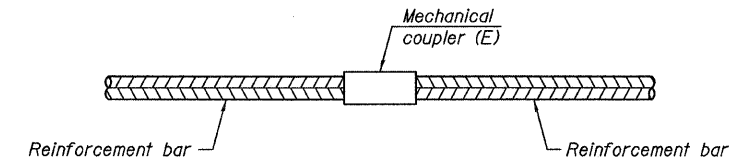
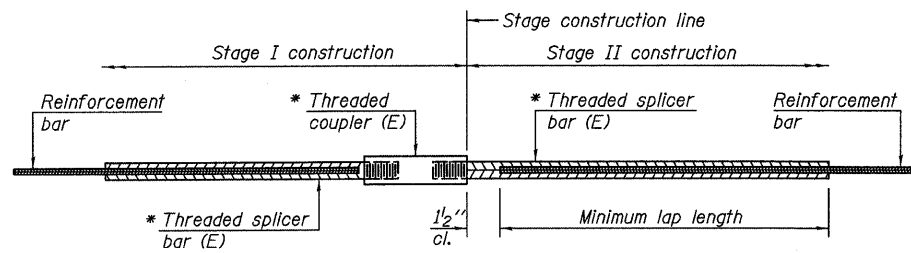


STATE OF ILLINOIS  
DEPARTMENT OF TRANSPORTATION



**STANDARD MECHANICAL SPLICER**

Location	Bar size	No. assemblies required	Table for minimum lap length
Crashwall @ Pier 3	#6	96	3



**STANDARD BAR SPLICER ASSEMBLY**

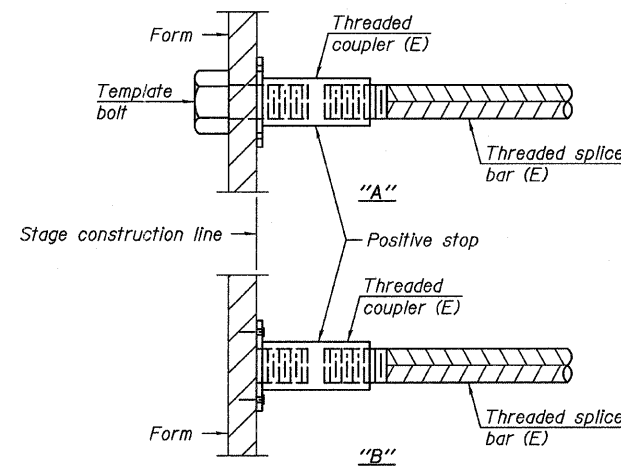
Bar size to be spliced	Minimum Lap Lengths				
	Table 1	Table 2	Table 3	Table 4	Table 5
3, 4	1'-5"	1'-11"	2'-1"	2'-4"	2'-3"
5	1'-9"	2'-5"	2'-7"	2'-11"	2'-10"
6	2'-1"	2'-11"	3'-1"	3'-6"	3'-4"
7	2'-9"	3'-10"	4'-2"	4'-8"	4'-6"
8	3'-8"	5'-1"	5'-5"	6'-2"	5'-10"
9	4'-7"	6'-5"	6'-10"	7'-9"	7'-5"

- Table 1: Black bar, 0.8 Class C
- Table 2: Black bar, Top bar lap, 0.8 Class C
- Table 3: Epoxy bar, 0.8 Class C
- Table 4: Epoxy bar, Top bar lap, 0.8 Class C
- Table 5: Epoxy bar, Top bar lap, Class B

Threaded splicer bar length = min. lap length + 1/2" + thread length

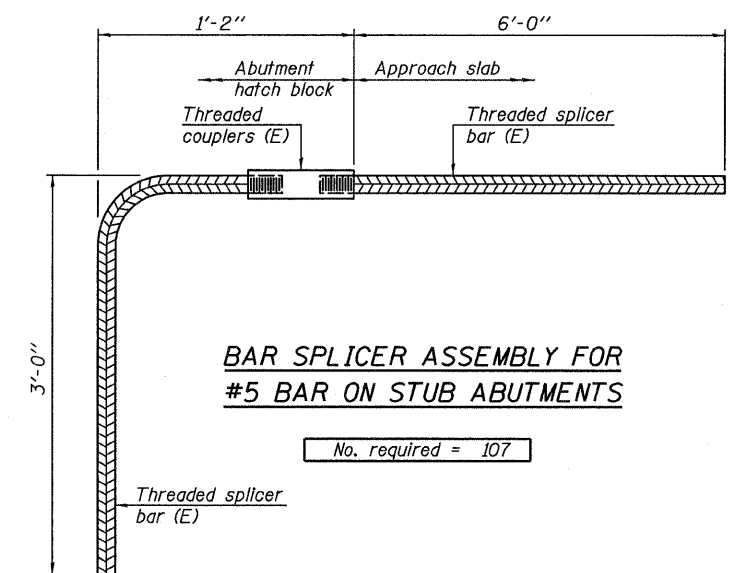
\* Epoxy not required on Bar Splicer Assembly components used in conjunction with black bars.

Location	Bar size	No. assemblies required	Table for minimum lap length
Deck	#5	1454	4
Deck @ Pier 3 Exp Jt	#6	4	4
Deck @ Abut. Exp. Jts.	#5	10	4
Approach Slab	#4	25	4
Approach Slab	#5	66	4
Abutment	#5	52	4



**INSTALLATION AND SETTING METHODS**

- "A" : Set bar splicer assembly by means of a template bolt.
- "B" : Set bar splicer assembly by nailing to wood forms or cementing to steel forms.
- (E) : Indicates epoxy coating.



**BAR SPLICER ASSEMBLY FOR #5 BAR ON STUB ABUTMENTS**

No. required = 107

**NOTES**

1. Splicer bars shall be deformed with threaded ends and have a minimum 60 ksi yield strength.
2. All reinforcement shall be lapped and tied to the splicer bars.
3. Bar splicer assemblies shall be epoxy coated according to the requirements for reinforcement bars. See Section 508 of the Standard Specifications.
4. See special provision for Mechanical Splicers.
5. See approved list of bar splicer assemblies and mechanical splicers for alternatives.

**BAR SPLICER ASSEMBLY AND MECHANICAL SPLICER DETAILS  
STRUCTURE NO. 016-3241**

<b>TYLIN INTERNATIONAL</b>	DESIGNED - MAU	REVISIONS		SHEET NO. 64  71 SHEETS	F.A.I RTE. 55	SECTION 0711.2R & 1011.1BR	COUNTY COOK	TOTAL SHEETS 741	SHEET NO. 317	
	CHECKED - AMD,	NAME	DATE							CONTRACT NO. 60999
	DRAWN - MAU									
	CHECKED - AMD,									
DATE - 03/25/2011				FED. ROAD DIST. NO. 1   ILLINOIS   FED. AID PROJECT						

4:53:46 PM  
pi:\01345\structure\C1\_South\_Approach\_016-3241\55splicer.dgn 5/10/2011